

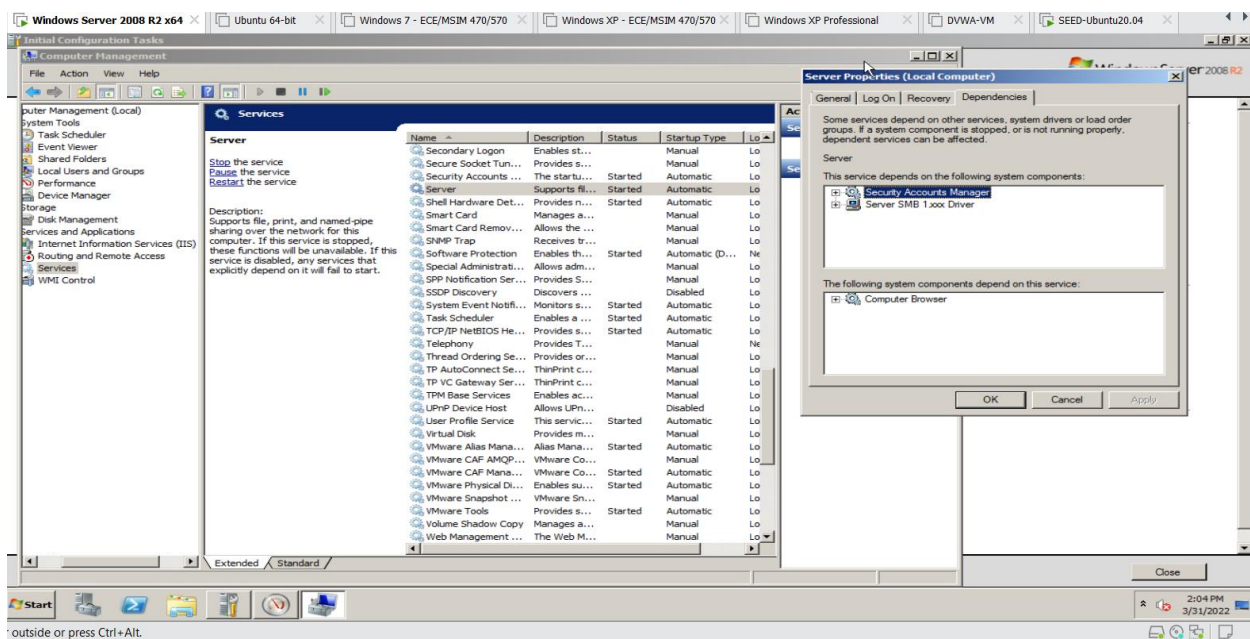
John Peck

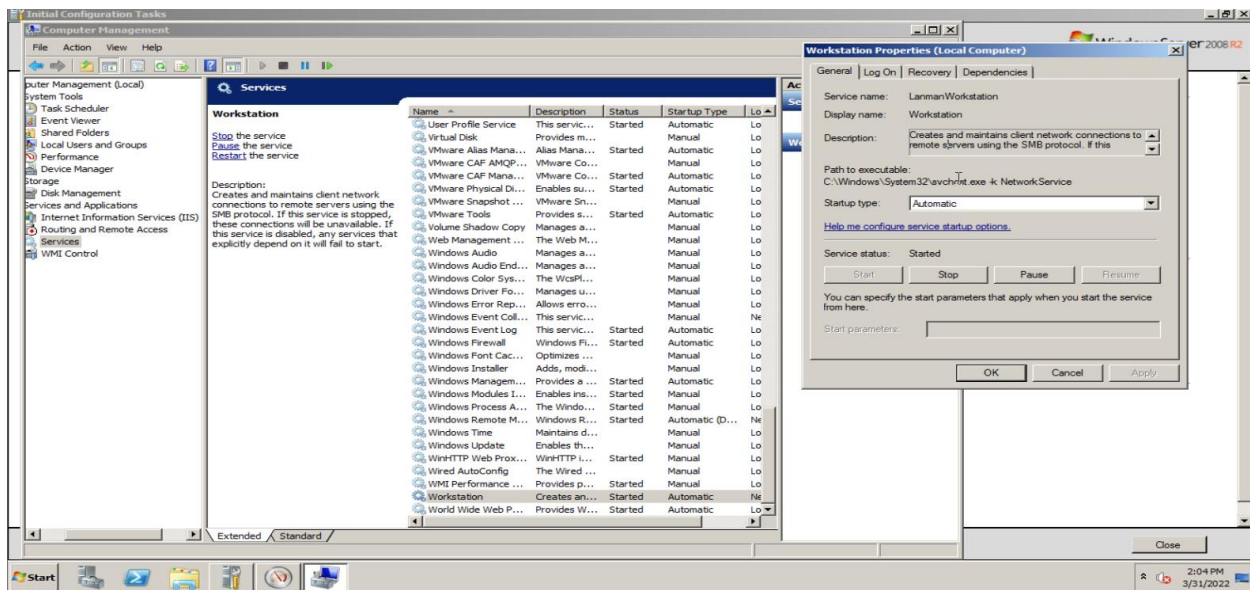
3/31/2022

WIN SYS

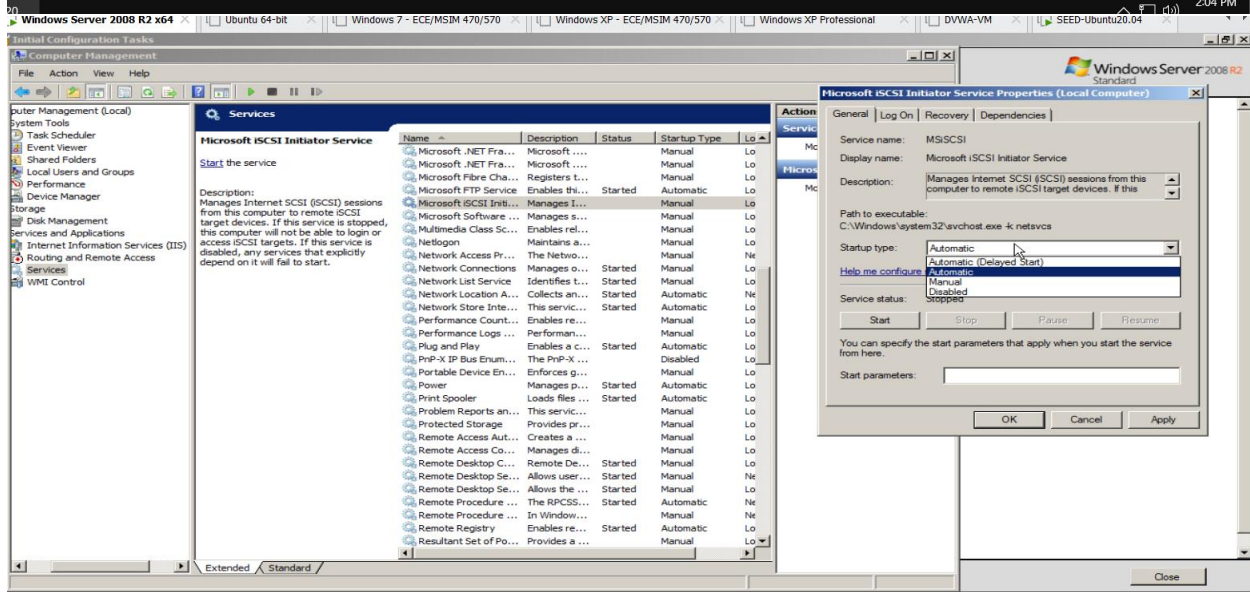
11-1 was shared on screen in class

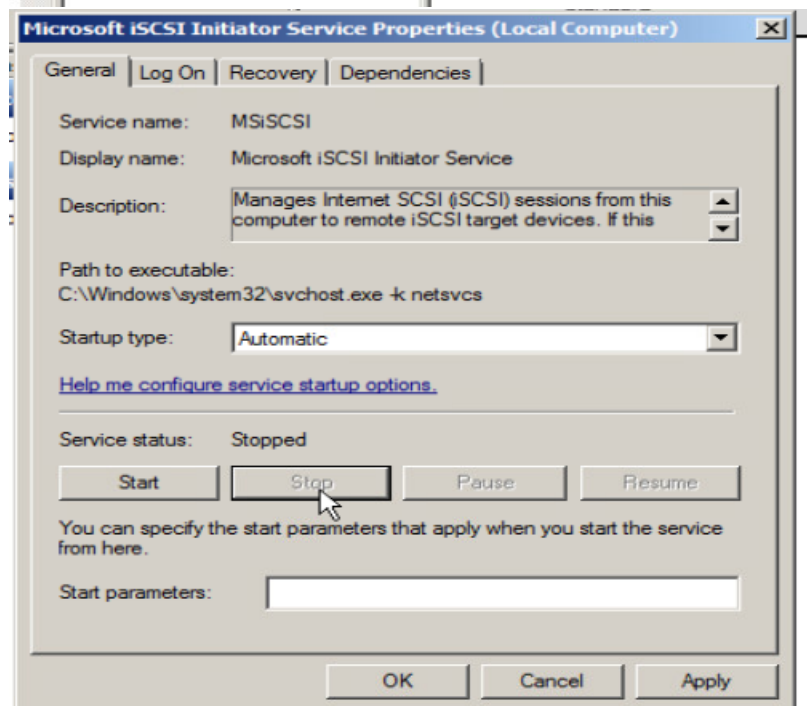
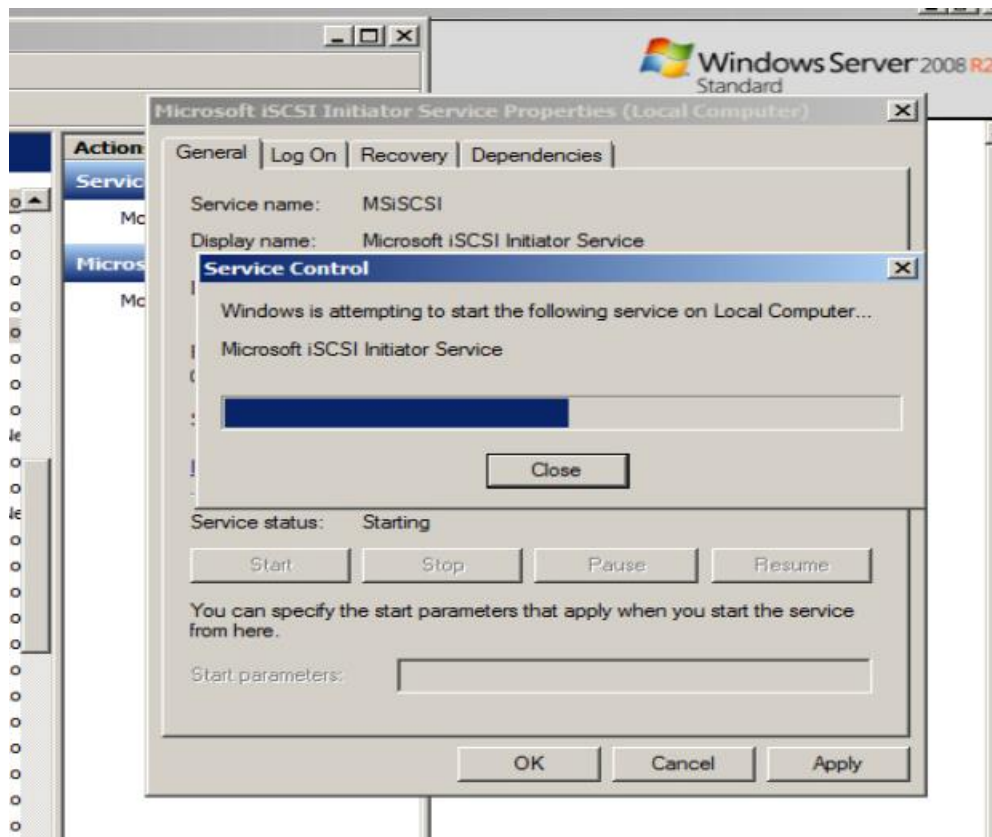
Activity 11-2: Monitoring and Managing a Service



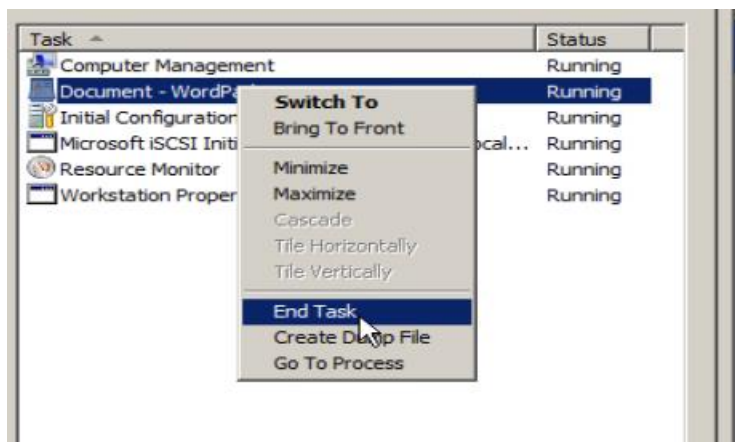
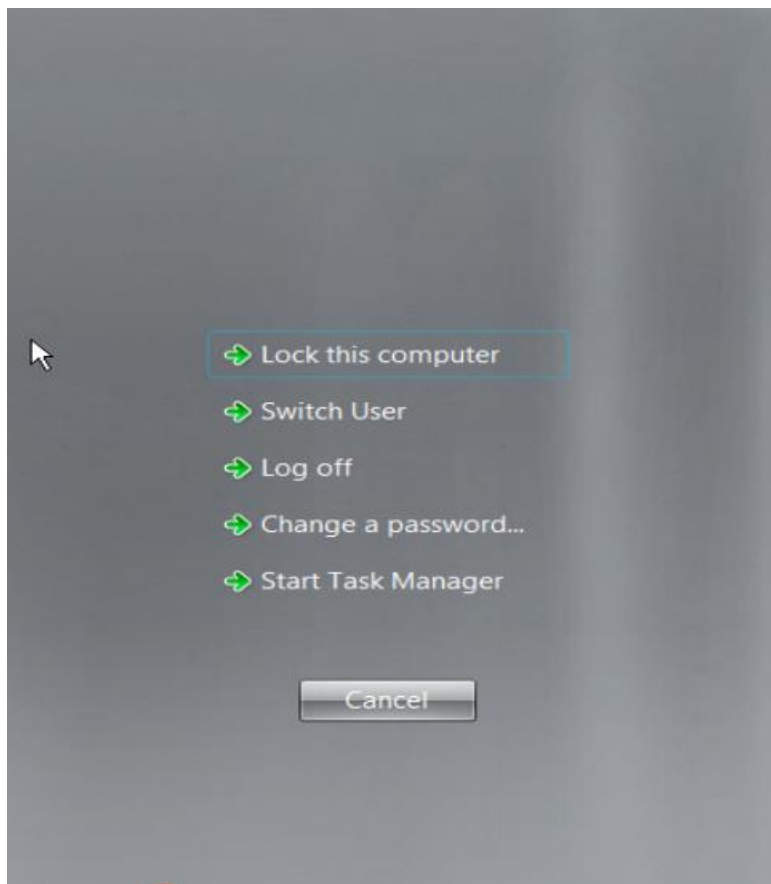


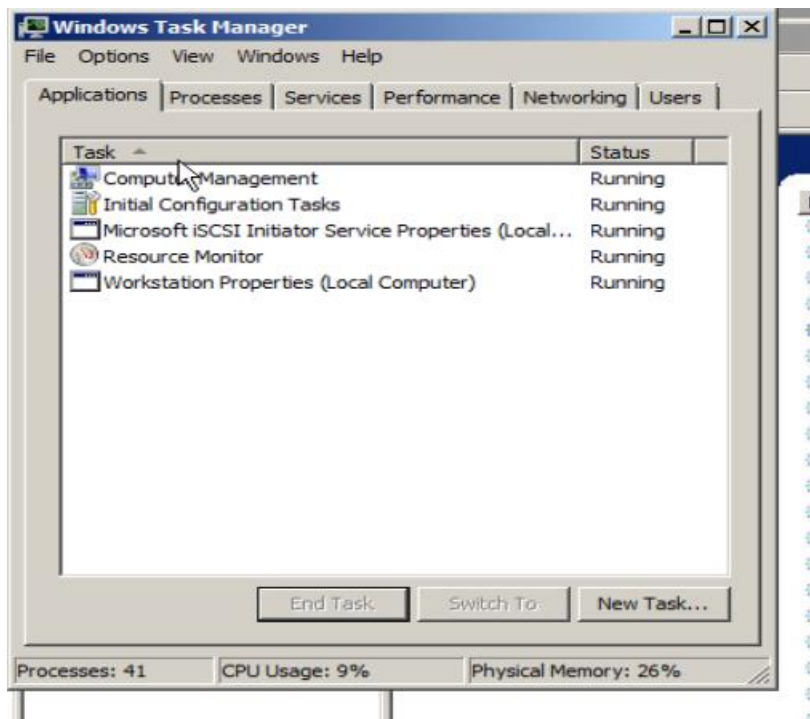
or outside or press Ctrl+Alt.



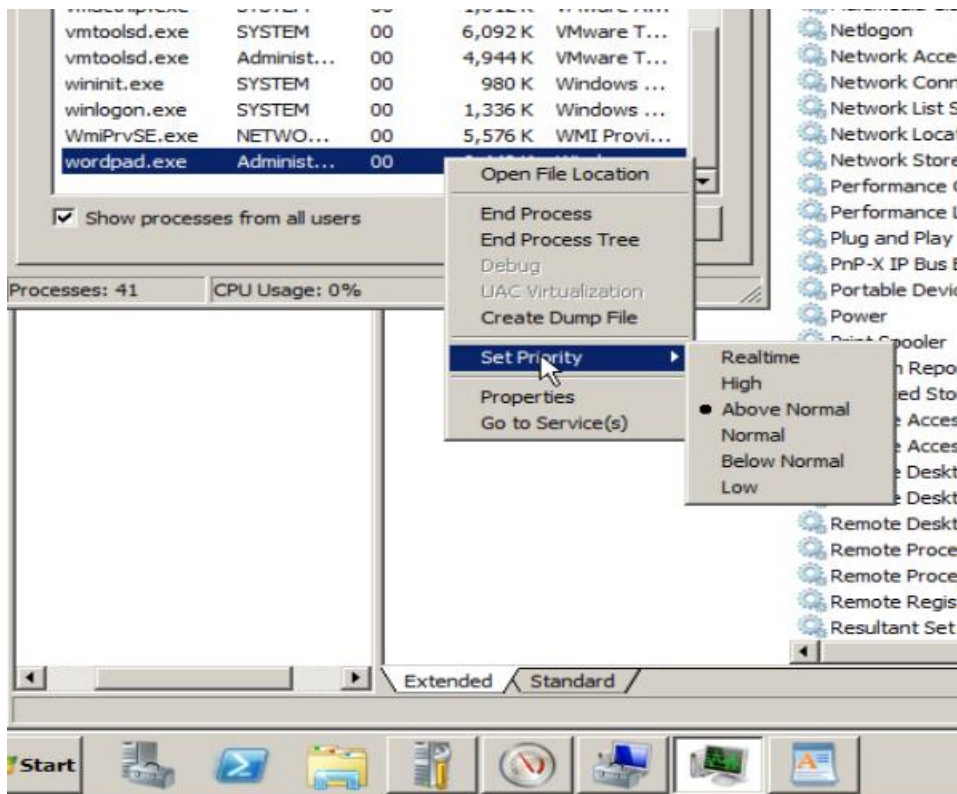


Activity 11-3: Working with Applications in Task Manager

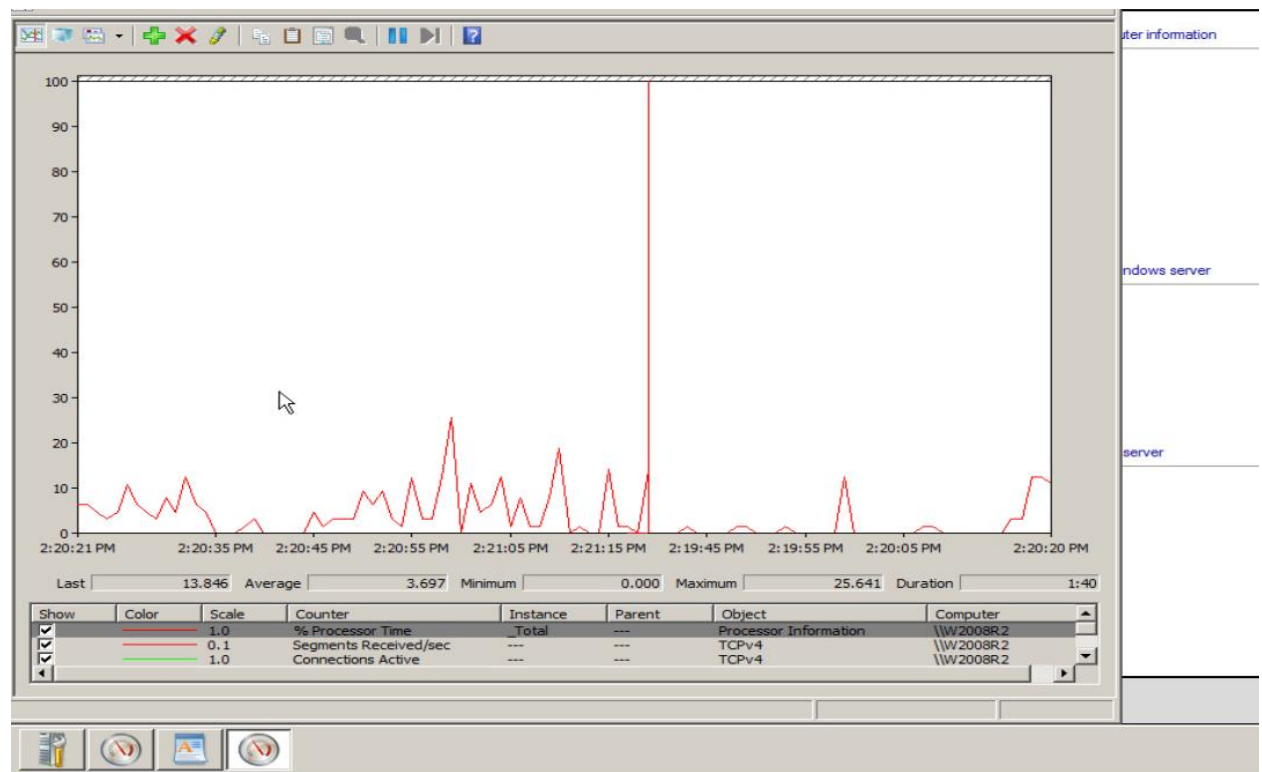
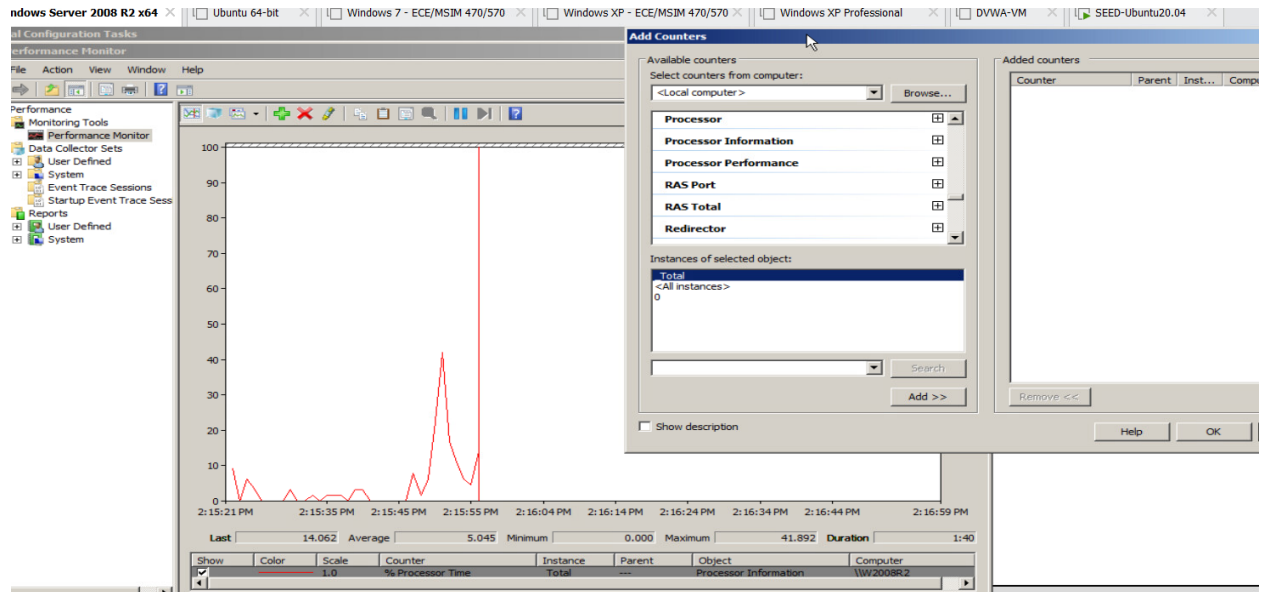




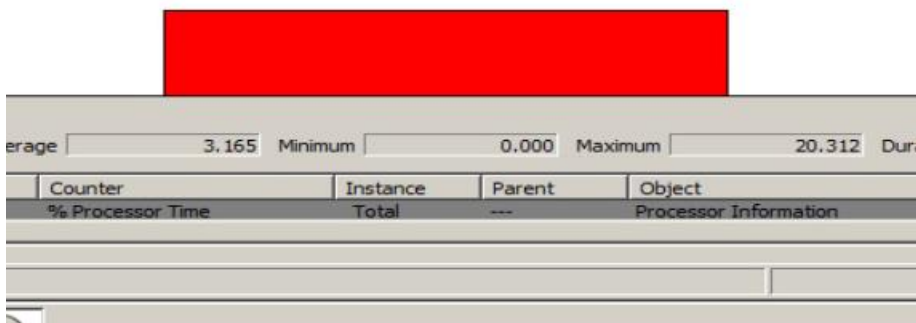
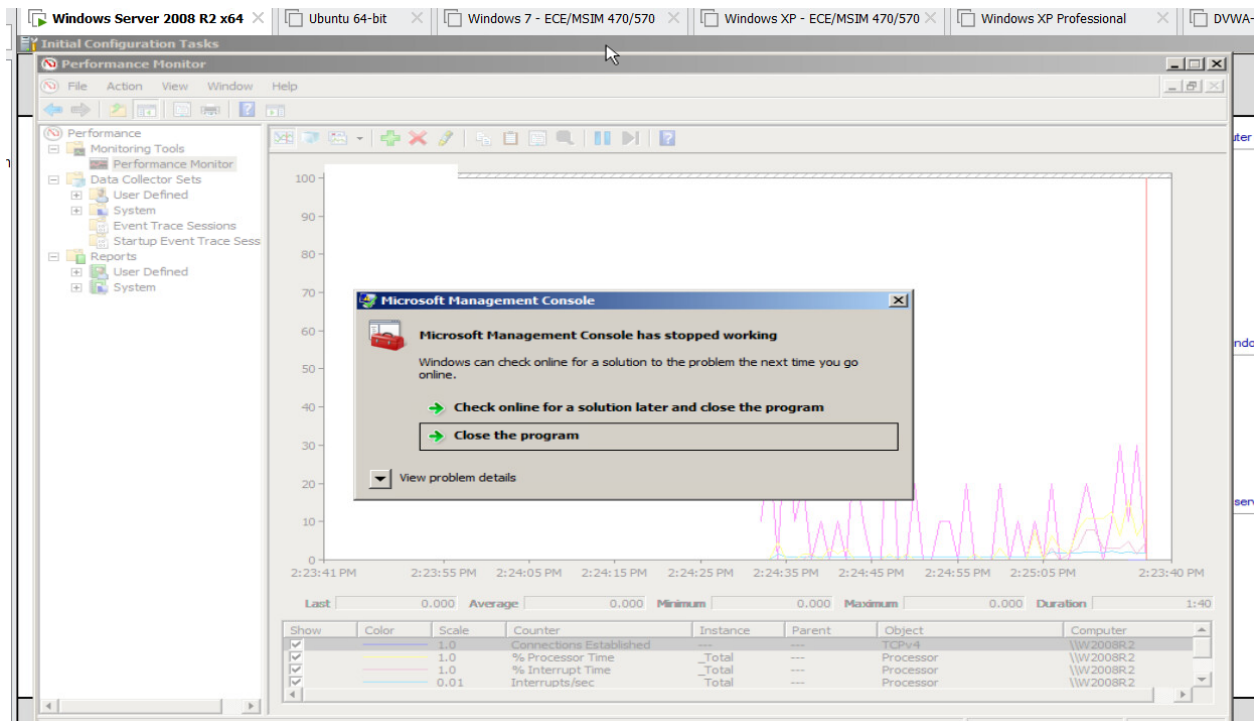
Activity 11-4: Working with Processes in Task Manager



Activity 11-5: Exploring Performance Monitor



Activity 11-6: Monitoring for Processor Problems



\\W2008R2	
Processor Information	_Total
% Processor Time	6.250

Activity 11-7: Verifying the Disk Counters

```
PS C:\Users\Administrator> diskperf
```

Both Logical and Physical Disk Performance counters on this system
are automatically enabled on demand.

For legacy applications using IOCTL_DISK_PERFORMANCE to retrieve raw counters,
you can use -Y or -N to forcibly enable or disable. No restart is required.

```
PS C:\Users\Administrator> _
```