

Watavien Favors

Task 1

ng.cengage.com/static/nb/ui/evio/index.html?deploymentId=6076101982003237459249503584&eISBN=9780357509807...

WATAVIEN | MINDTAP
Live Virtual Machine Lab 12-1: Cryptography

Figure 1-10 Screenshot of PLAB0001: Clicking on the notification bar.

Step 11
In the notification bar, click the down arrow and select **Save as**.

Figure 1-11 Screenshot of PLAB0001: Clicking the Save as dialog box.

Step 12
In the **Save As** dialog box, navigate to the **Local Disk C:\valfiles** folder and click **Save**.

Figure 1-13 Screenshot of PLAB0001: Clicking Save on the Save as dialog box.

Step 13
Close the notification bar.
Keep the Internet Explorer window open.

Task 2

ng.cengage.com/static/nb/ui/evio/index.html?deploymentId=6076101982003237459249503584&eISBN=9780357509807...

WATAVIEN | MINDTAP
Live Virtual Machine Lab 12-1: Cryptography

Figure 1-14 Screenshot of PLAB0001: Entering the password and clicking Decrypt Now.

Step 20
Now, the file is now decrypted. In the **Logging** section, the status of the file is now displayed.

Figure 1-15 Screenshot of PLAB0001: Showing the decryption events in the logging window.

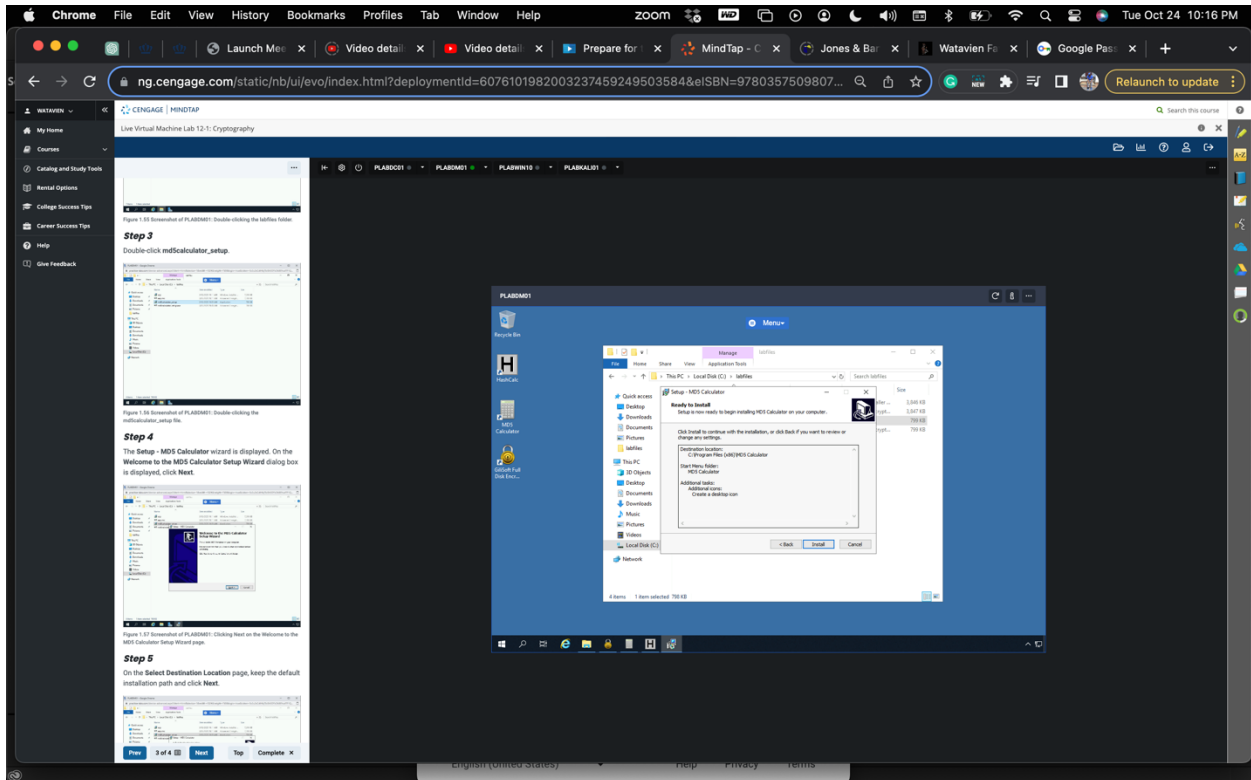
Close the Crypt4Free window.

Task 3 - Download and Install HashCalc
HashCalc allows you to check 13 popular hash and checksum algorithms.
In this task, you will learn to use HashCalc.

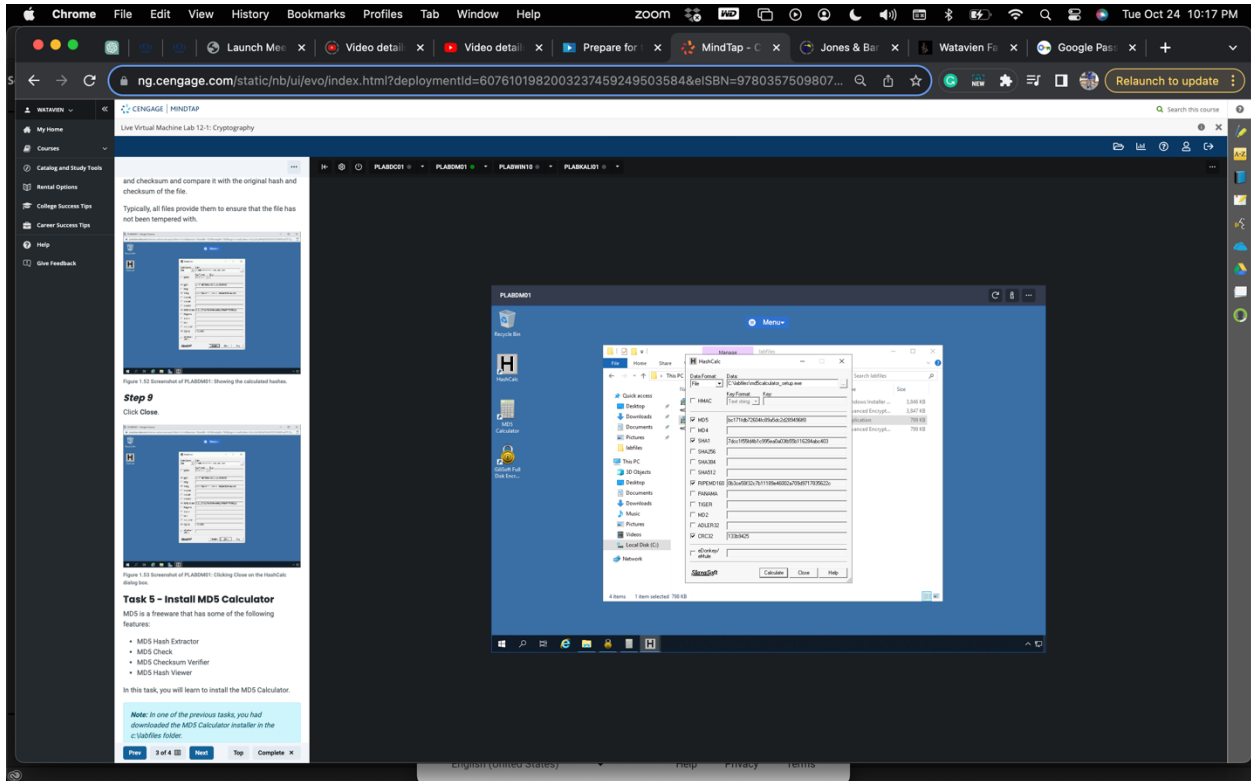
Step 1
Ensure you have powered the required devices. Connect to PLAB0001. Restore the Internet Explorer window from the taskbar.

Task 3

Watavien Favors

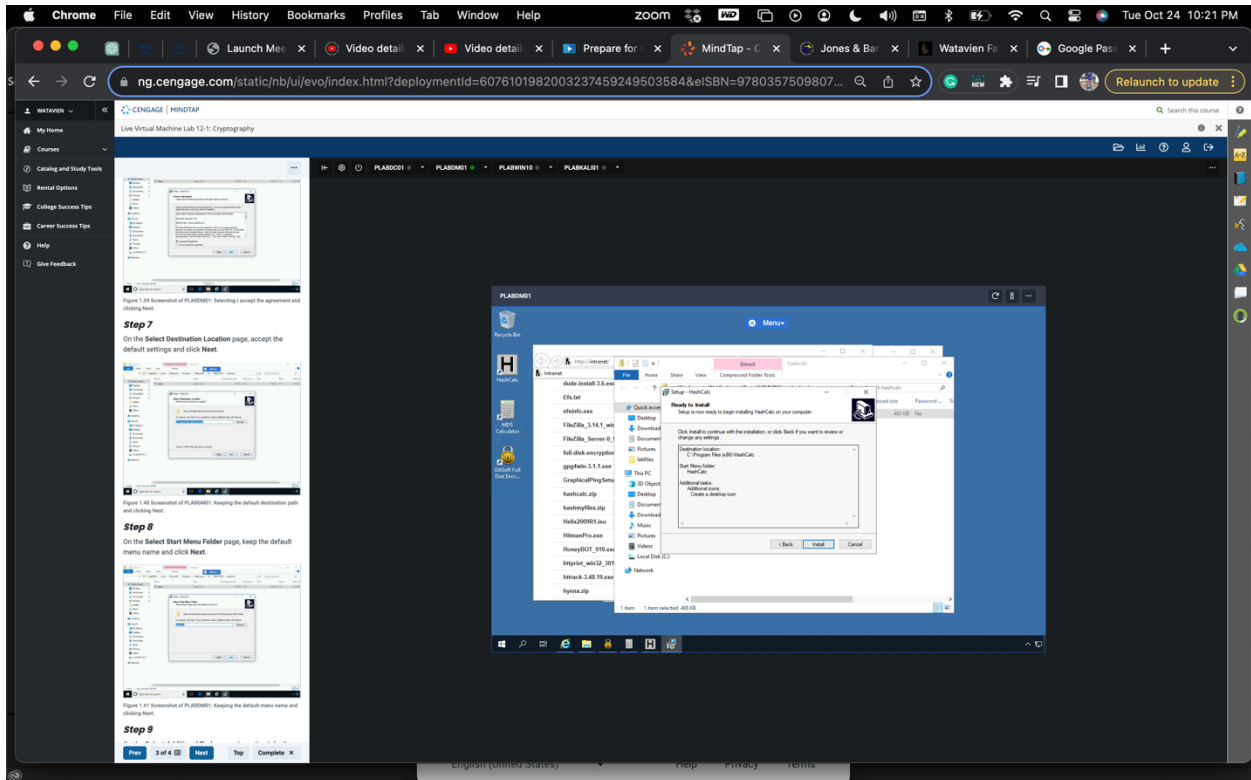


Task 4

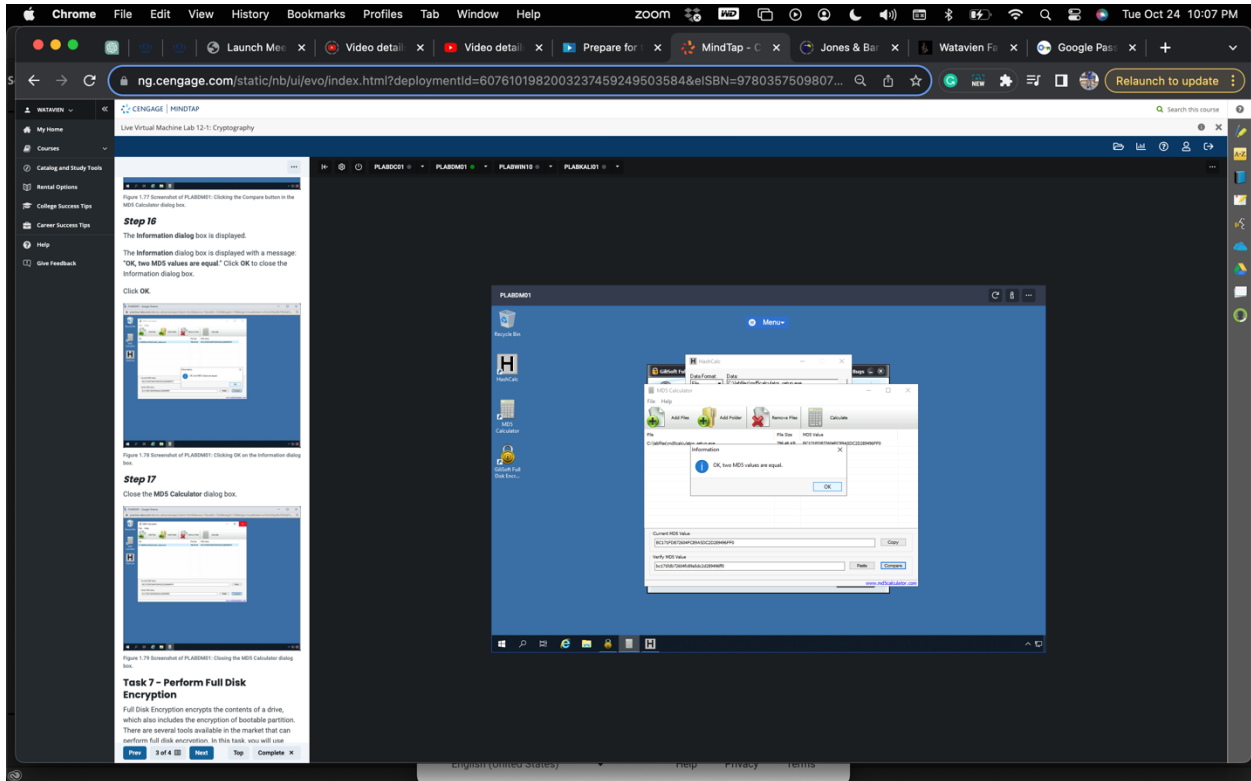


Task 5

Watavien Favors



Task 6



Wativien Favors

Task7

The screenshot displays a web browser window with a URL from cengage.com. The main content area shows a virtual machine interface for a Windows operating system. A dialog box titled "Full Disk Encryption" is open, showing a progress bar and a "Decrypt" button. The desktop background is blue with icons for Recycle Bin, HomeGroup, and Calculator. A sidebar on the left contains a tutorial with steps 18, 19, and 20, including instructions on selecting files and entering a password.

Step 18
You are back on the CryptFree window. Expand labfiles. Select `mscalculator_setup.exe` and click Decrypt.

Step 19
The cursor is moved into the Password textbox. Enter the following password in the Password textbox:
`Passw@rd`
Click Decrypt Now.
The decryption process will now start.

Step 20
Now, the file is now decrypted. In the Logging section, the status of the file is now displayed.