

CYSE 608 : Hands-On Lab Report 2

Name: Aaron Jones

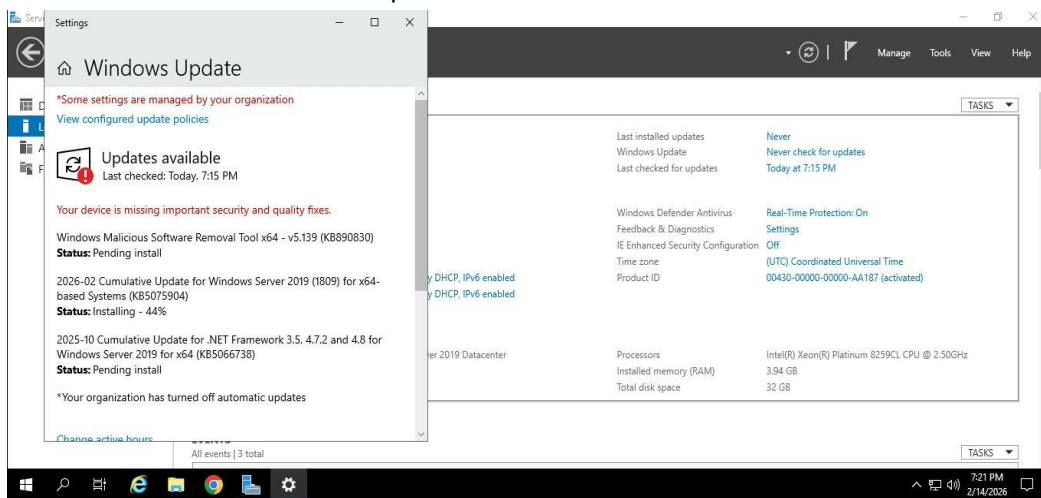
Directions: Review the tutorial video found in Module 2 and complete the following tasks. Submit your completed report in Canvas.

Basic Configuration Task in Windows Server 2019

Total Points = 50 points

Task 1. [12.5 points]

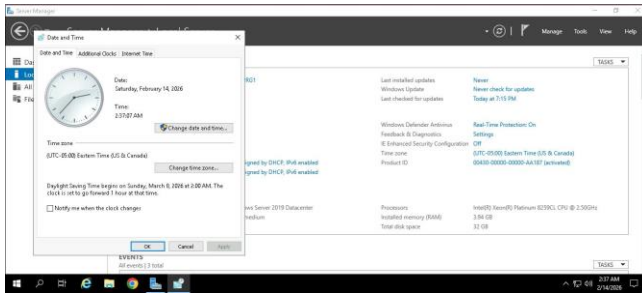
1. System Update
2. Provide a screenshot of the completed task.



3. I opened Server Manager, navigated to Local Server, and selected Microsoft Update. The Windows Update setting is configured to “Never check for updates,” which indicates that the system’s update behavior is being controlled by ODU.

Task 2. [12.5 points]

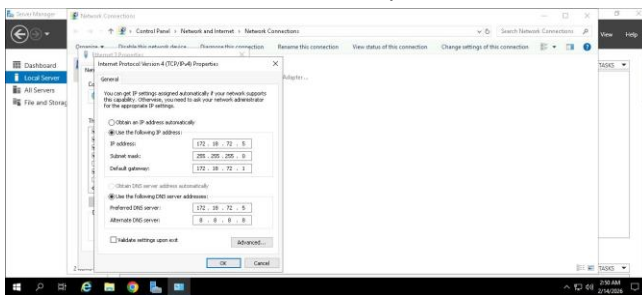
1. Setup Time Zone
2. Provide a screenshot of the completed task.



3. I opened Server Manager, navigated to Local Server, and selected the Time Zone/Date and Time setting. From there, I adjusted the system clock to the correct date and time to ensure accurate system logging and synchronization.

Task 3. [12.5 points]

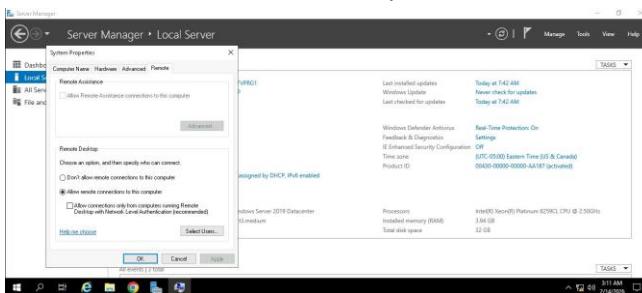
1. Assign Static IP address.
2. Provide a screenshot of the completed task.



3. I navigated to Network Connections, right clicked on Ethernet 3, and selected Properties. I then configured the IPv4 settings by manually assigning the IP address 172.18.72.5 and setting the DNS server to 172.18.72.5.

Task 4. [12.5 points]

1. Enable Remote Desktop
2. Provide a screenshot of the completed task.



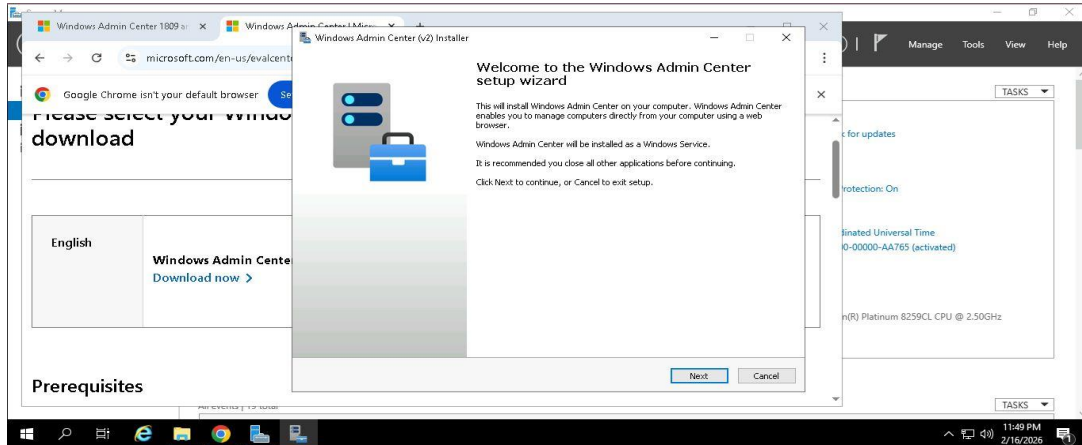
3. Remote desktop is enabled.

Installing Windows Admin Center on Windows Server 2019

Total Points = 50 points

Task 5. [12.5 points]

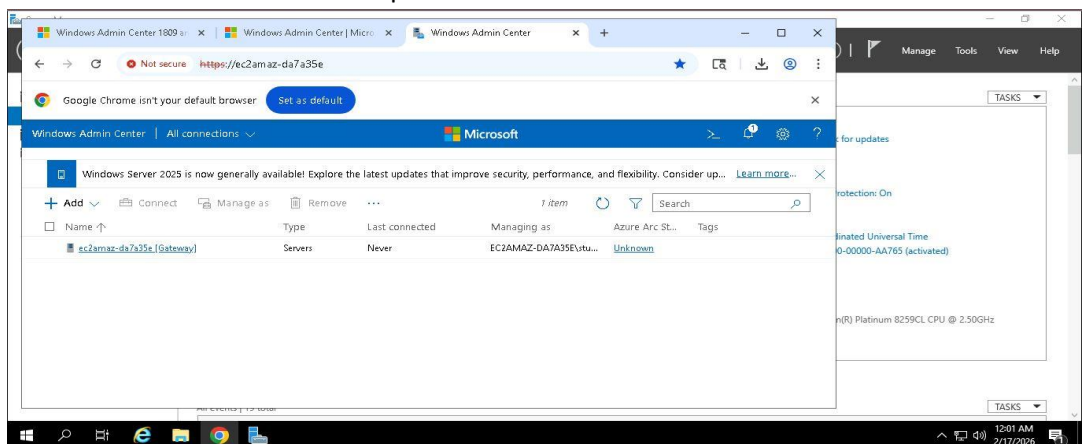
1. Download Windows Admin Center Setup
2. Provide a screenshot of the completed task.



3. I opened Google, searched for Windows Admin Center version 1809, and downloaded the upgraded version from the official Microsoft website.

Task 6. [12.5 points]

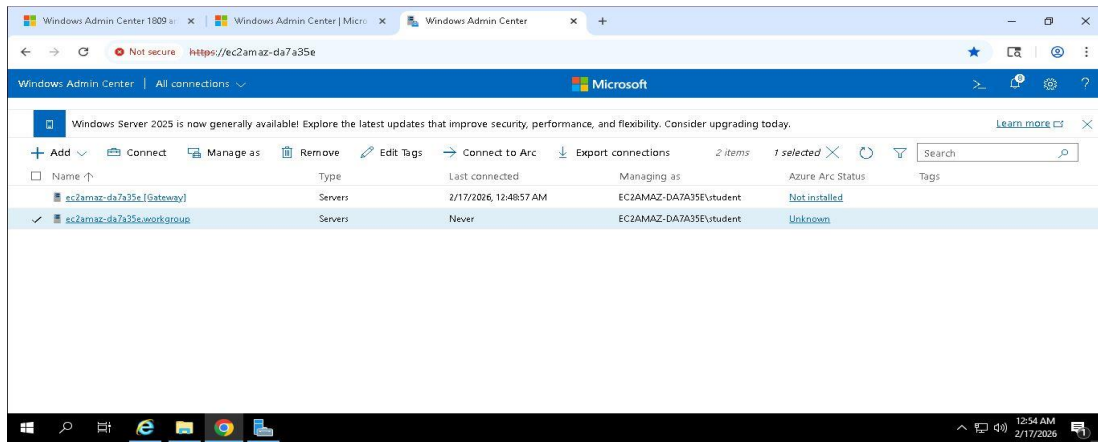
1. Install Windows Admin Center
2. Provide a screenshot of the completed task.



3. Select Express setup, HTML login, configured remote access, ports, self-signed certificate, enabled updates and diagnostics. After installation, I successfully accessed Windows Admin Center and viewed the server dashboard.

Task 7. [12.5 points]

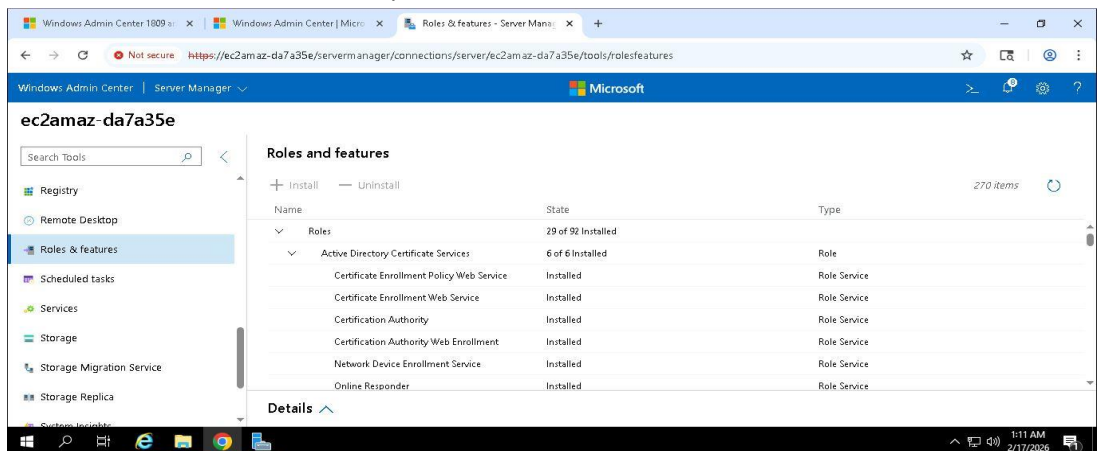
1. Add 2019 Server
2. Provide a screenshot of the completed task.



3. In Windows Admin Center, I selected Add, chose Add Server Connection, entered the server's name, provided administrative credentials, and successfully added the server to the management dashboard.

Task 8. [12.5 points]

1. Manage Servers
2. Provide a screenshot of the completed task.



3. To manage server roles, navigate to Server Manager, select Add Roles and Features, choose Active Directory Certificate Services, and click Install to configure the service.