

CYSE 608: Hands-On Lab Report 4

Name: BRYANT WATKINS

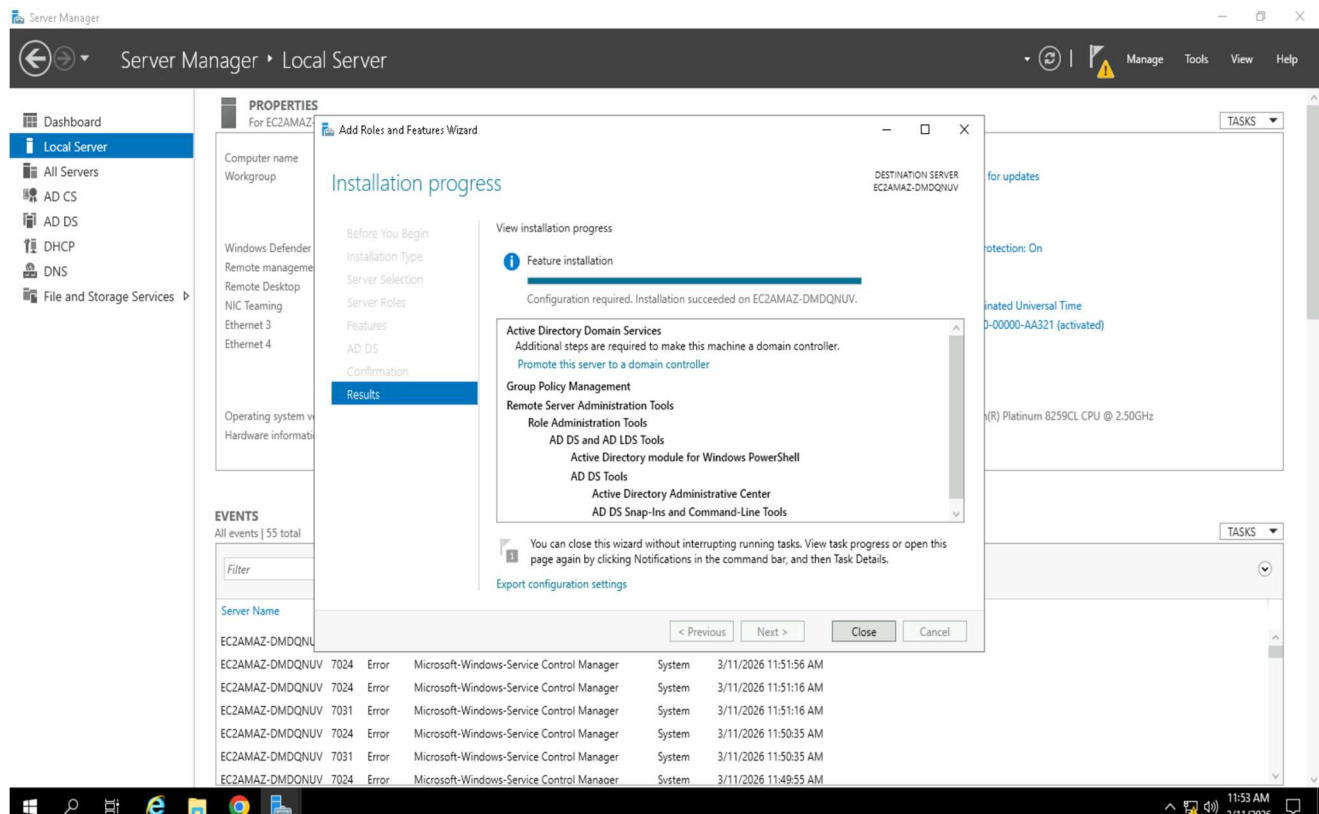
Directions: Review the tutorial video found in Module 4 and complete the following tasks. Submit your completed report in Canvas.

Setting up Active Directory in Windows Server 2019

Total Points = 50 points

Task 1. [12.5 points]

1. The most relevant task you can complete/perform.
2. Provide a screenshot of the completed task.

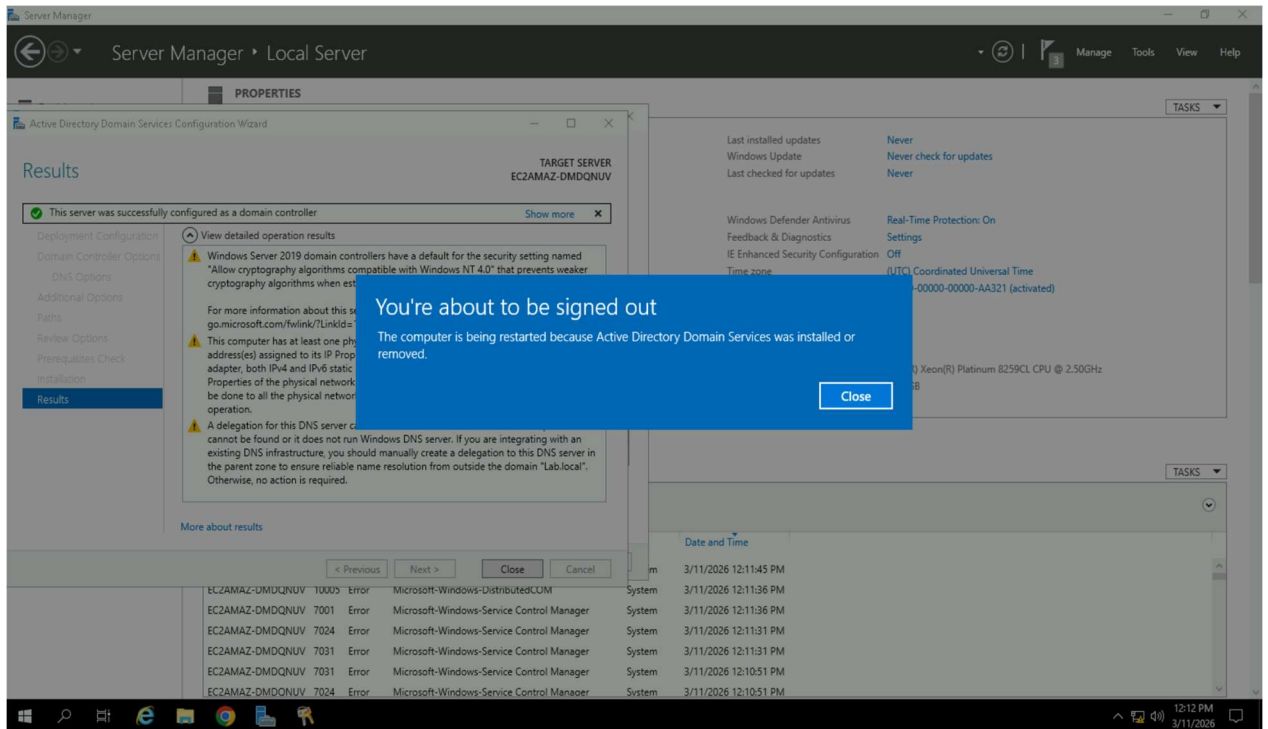


3. Briefly describe the screenshot, explaining the task or tool used.

The above screenshot illustrates the successful installation of Active Directory Domain Services. Active Directory Domain Services is a powerful tool for cybersecurity professionals that provides directory services, account management, policy management, etc.

Task 2. [12.5 points]

1. The most relevant task you can complete/perform.
2. Provide a screenshot of the completed task.

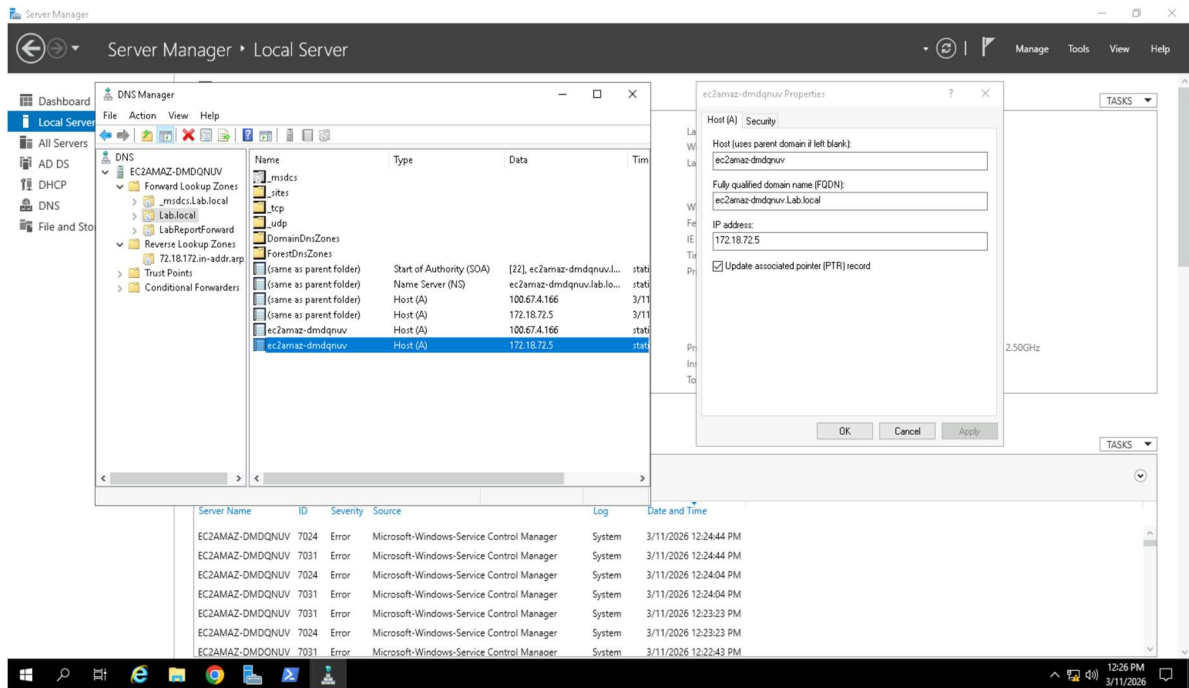


3. Briefly describe the screenshot, explaining the task or tool used.

This image shows the completion of promoting the server to Domain Controller. This is a critical step in ensuring the correct Active Directory Domain Services post-installation configuration.

Task 3. [12.5 points]

1. The most relevant task you can complete/perform.
2. Provide a screenshot of the completed task.

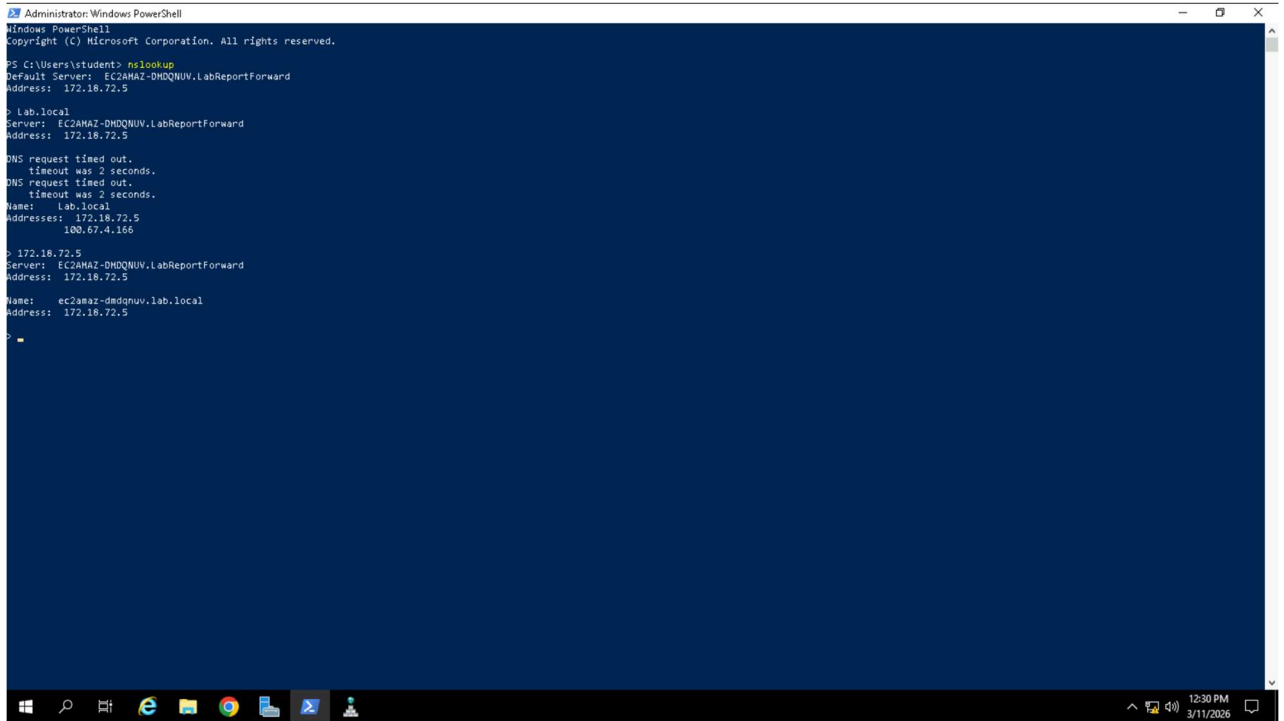


3. Briefly describe the screenshot, explaining the task or tool used.

The above image illustrates the task of updating associated pointer record for forward lookup zone. This task ensures that there are no network mismatches, as the forward and reverse lookup zones will match up.

Task 4. [12.5 points]

1. The most relevant task you can complete/perform.
2. Provide a screenshot of the completed task.



```
Administrator: Windows PowerShell
Windows PowerShell
Copyright (C) Microsoft Corporation. All rights reserved.

PS C:\Users\student> nslookup
Default Server: EC2AMAZ-DHQNUUV.LabReportForward
Address: 172.18.72.5

> lab.local
Server: EC2AMAZ-DHQNUUV.LabReportForward
Address: 172.18.72.5

DNS request timed out.
  timeout was 2 seconds.
DNS request timed out.
  timeout was 2 seconds.
Name:   lab.local
Address: 172.18.72.5
        100.67.4.166

> 172.18.72.5
Server: EC2AMAZ-DHQNUUV.LabReportForward
Address: 172.18.72.5

Name:   ec2amaz-dmqnuv.lab.local
Address: 172.18.72.5

>
```

3. Briefly describe the screenshot, explaining the task or tool used.

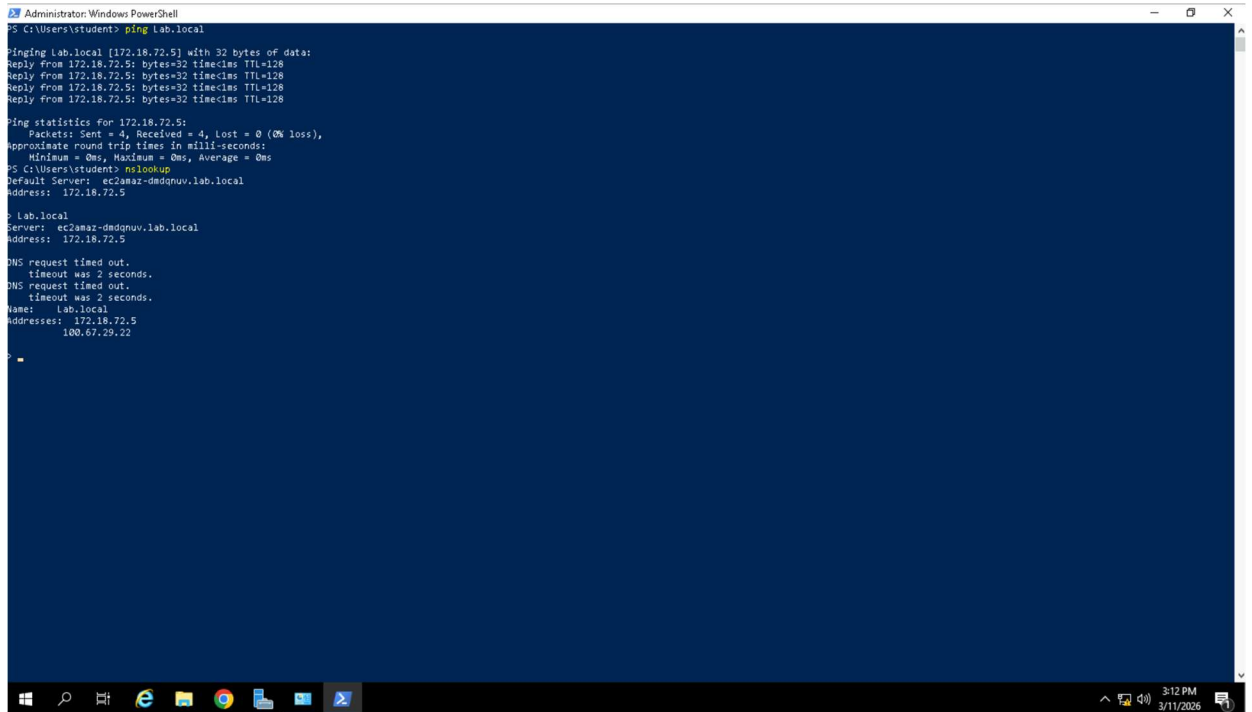
The above image simply displays PowerShell commands illustrating the correct system configurations made in the previous steps.

How to Join Windows Server 2019 to an Existing Active Directory Domain

Total Point = 50 points

Task 5. [12.5 points]

1. The most relevant task you can complete/perform.
2. Provide a screenshot of the completed task.



```
Administrator: Windows PowerShell
PS C:\Users\student> ping Lab.local

Pinging Lab.local [172.18.72.5] with 32 bytes of data:
Reply from 172.18.72.5: bytes=32 time=1ms TTL=128
Reply from 172.18.72.5: bytes=32 time=1ms TTL=128
Reply from 172.18.72.5: bytes=32 time=1ms TTL=128
Reply from 172.18.72.5: bytes=32 time=1ms TTL=128

Ping statistics for 172.18.72.5:
    Packets: Sent = 4, Received = 4, Lost = 0 (0% loss),
    Approximate round trip times in milli-seconds:
        Minimum = 0ms, Maximum = 0ms, Average = 0ms
PS C:\Users\student> nslookup
Default Server: ec2amaz-dmqnuv.lab.local
Address: 172.18.72.5

> Lab.local
Server: ec2amaz-dmqnuv.lab.local
Address: 172.18.72.5

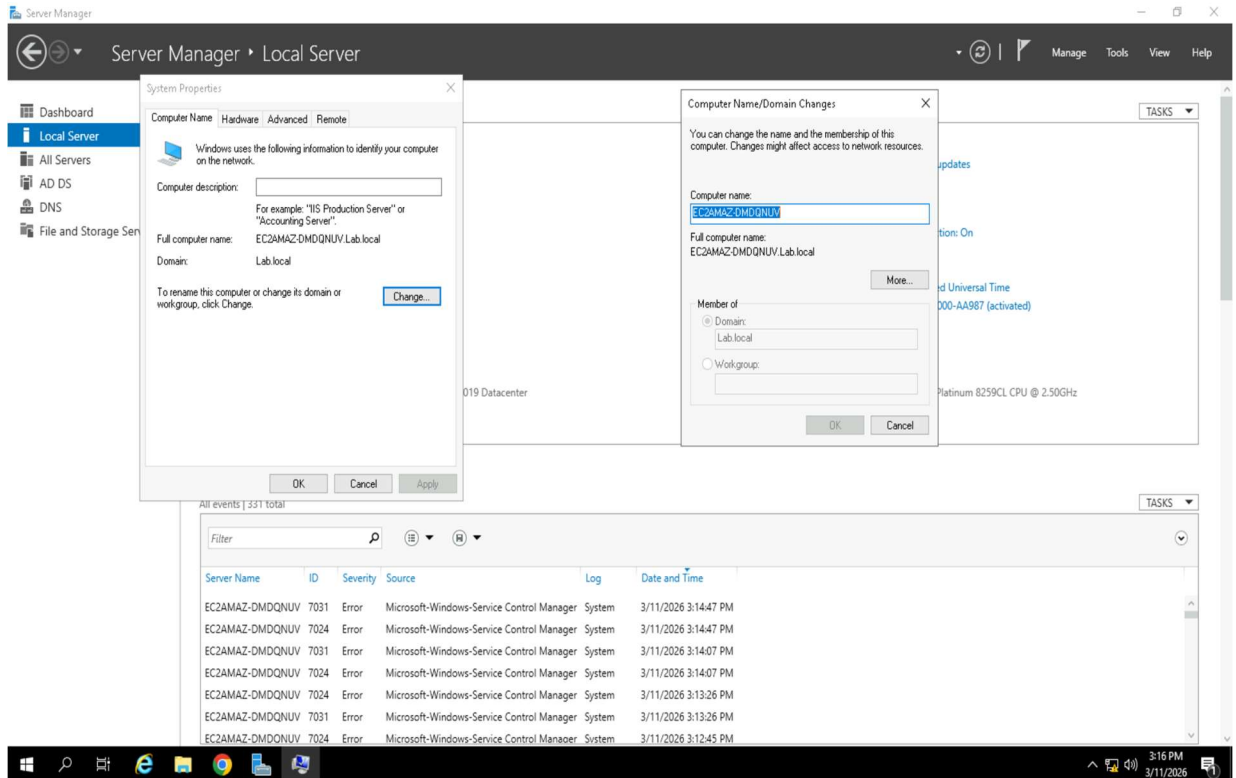
DNS request timed out.
  timeout was 2 seconds.
DNS request timed out.
  timeout was 2 seconds.
Name:   Lab.local
Address: 172.18.72.5
        100.67.29.22
```

3. Briefly describe the screenshot, explaining the task or tool used.

The above screenshot illustrates the process for ensuring that I could successfully ping and communicate with the domain and host. This step is crucial, as it essentially informs me as to whether I will be able to successfully join the desired server.

Task 6.

1. The most relevant task you can complete/perform.
2. Provide a screenshot of the completed task.

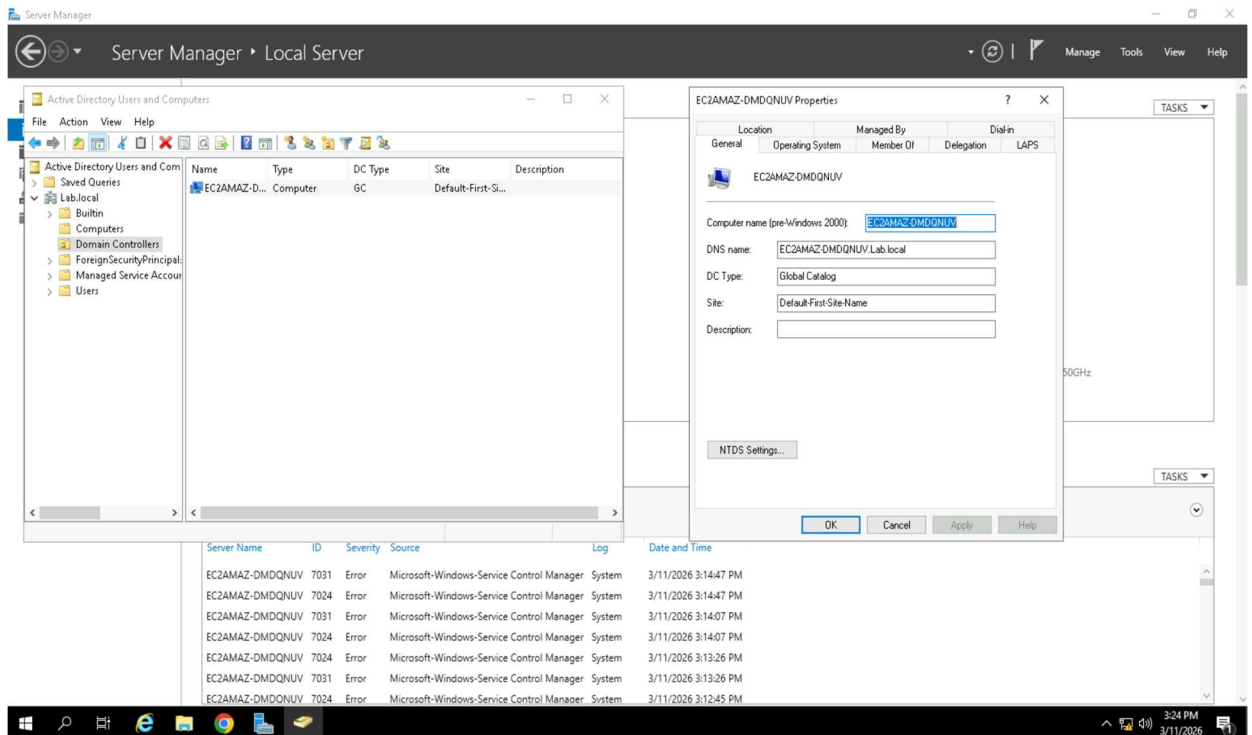


3. Briefly describe the screenshot, explaining the task or tool used.

This image displays the verification of successfully joining the *Lab.local* domain previously created. This process is incredibly beneficial for centralized management tasks.

Task 7. [12.5 points]

1. The most relevant task you can complete/perform.
2. Provide a screenshot of the completed task.

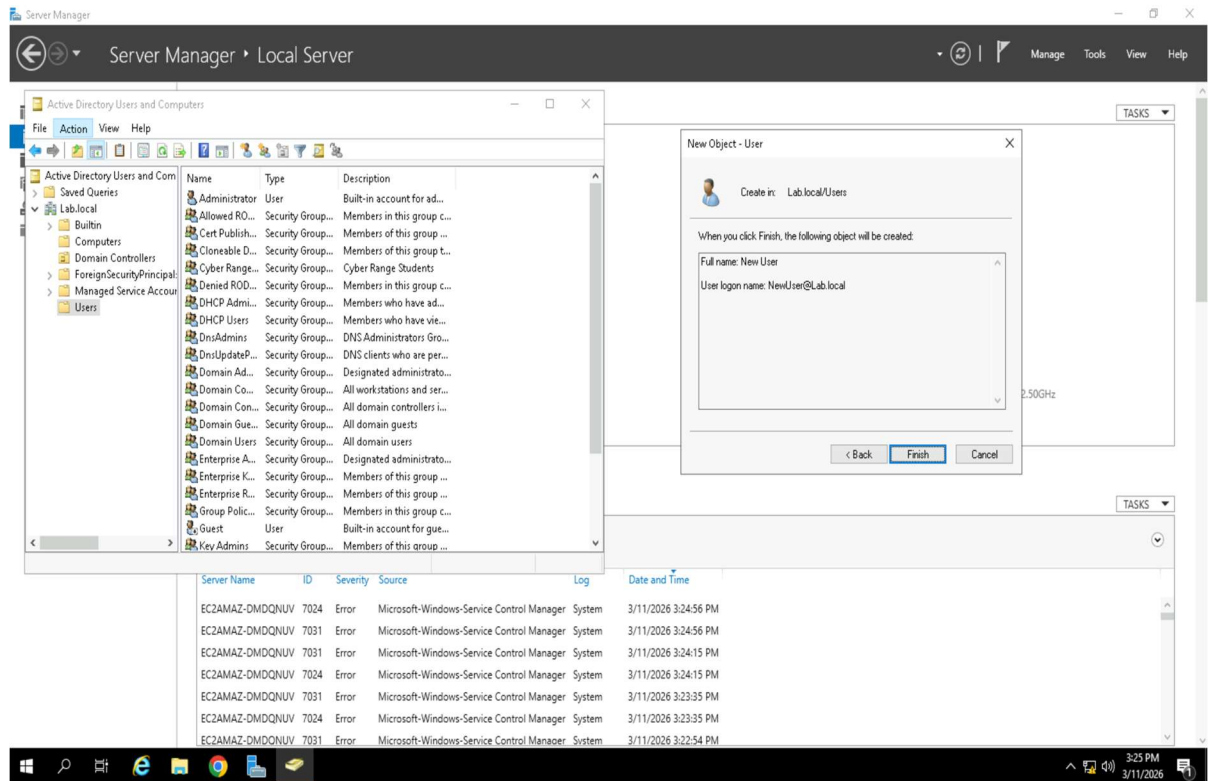


3. Briefly describe the screenshot, explaining the task or tool used.

The above image simply illustrates an alternative method to the previous task. By navigating through the Active Directory Users and Computers, I was able to successfully locate the computer needed to confirm the adding of the server to the domain.

Task 8. [12.5 points]

1. The most relevant task you can complete/perform.
2. Provide a screenshot of the completed task.



3. Briefly describe the screenshot, explaining the task or tool used.

The image above illustrates the successful creation of a new user. This is a relatively simple task that is critical to knowing how to effectively utilize Active Directory services. Tasks such as - user creation, policy management, computer management, etc. are essential tasks that many administrators and cybersecurity professionals utilize Active Directory services for.