

# CYSE 608: Hands-On Lab Report 6

Name: **BRYANT WATKINS**

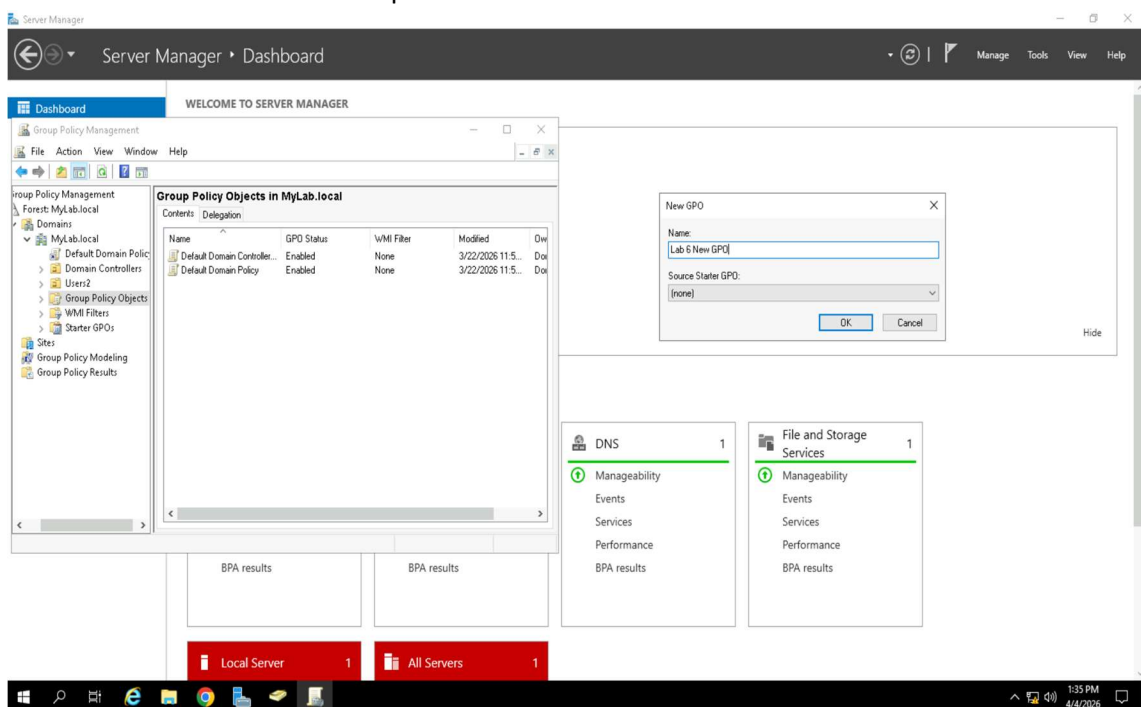
**Directions:** Review the tutorial video found in Module 6 and complete the following tasks. Submit your completed report in Canvas.

## Install Google Chrome Using Group Policy in Windows Server 2019 Active Directory

**Total Points = 50 points**

### Task 1. [12.5 points]

1. The most relevant task you can complete/perform.
2. Provide a screenshot of the completed task.

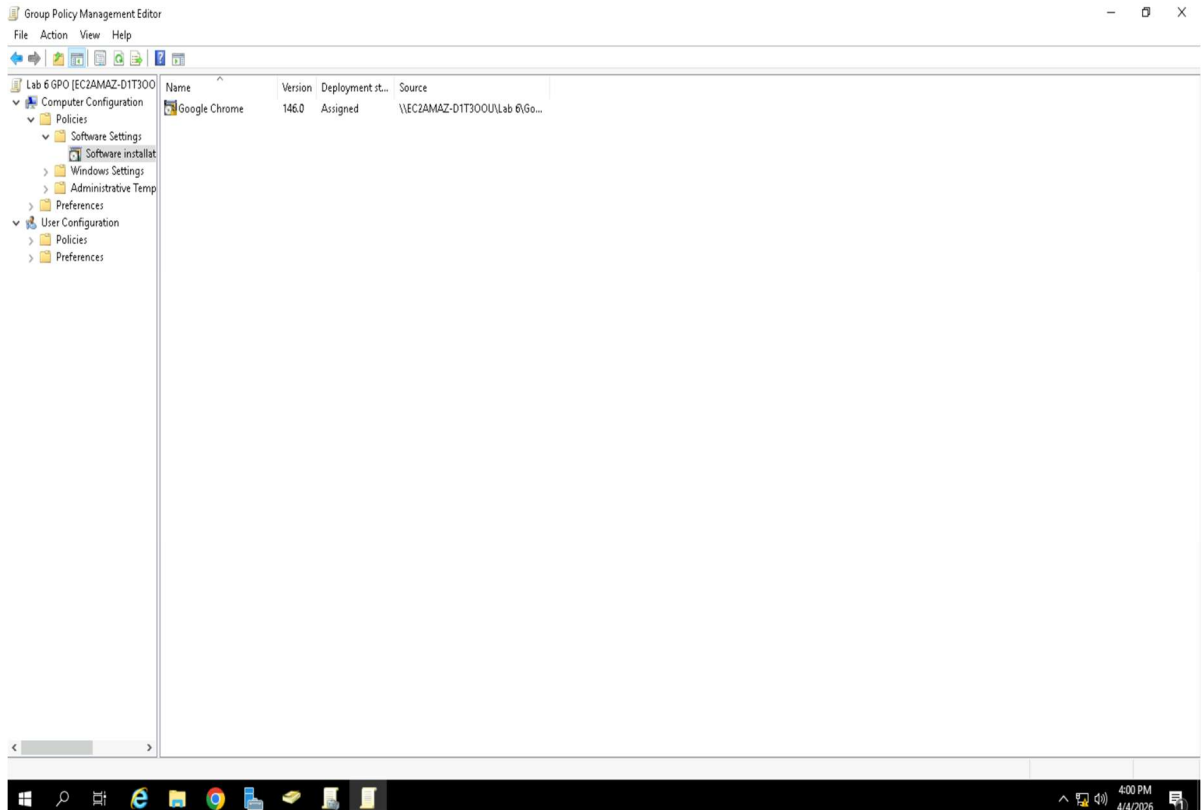


3. Briefly describe the screenshot, explaining the task or tool used.

**The screen image above illustrates the task of creating a Group Policy Object (GPO). Being able to create and manipulate GPOs is a critical part of Windows server administration for cybersecurity professionals. GPOs play a crucial role in the configuration of user and security settings, amongst other areas.**

## Task 2. [12.5 points]

1. The most relevant task you can complete/perform.
2. Provide a screenshot of the completed task.

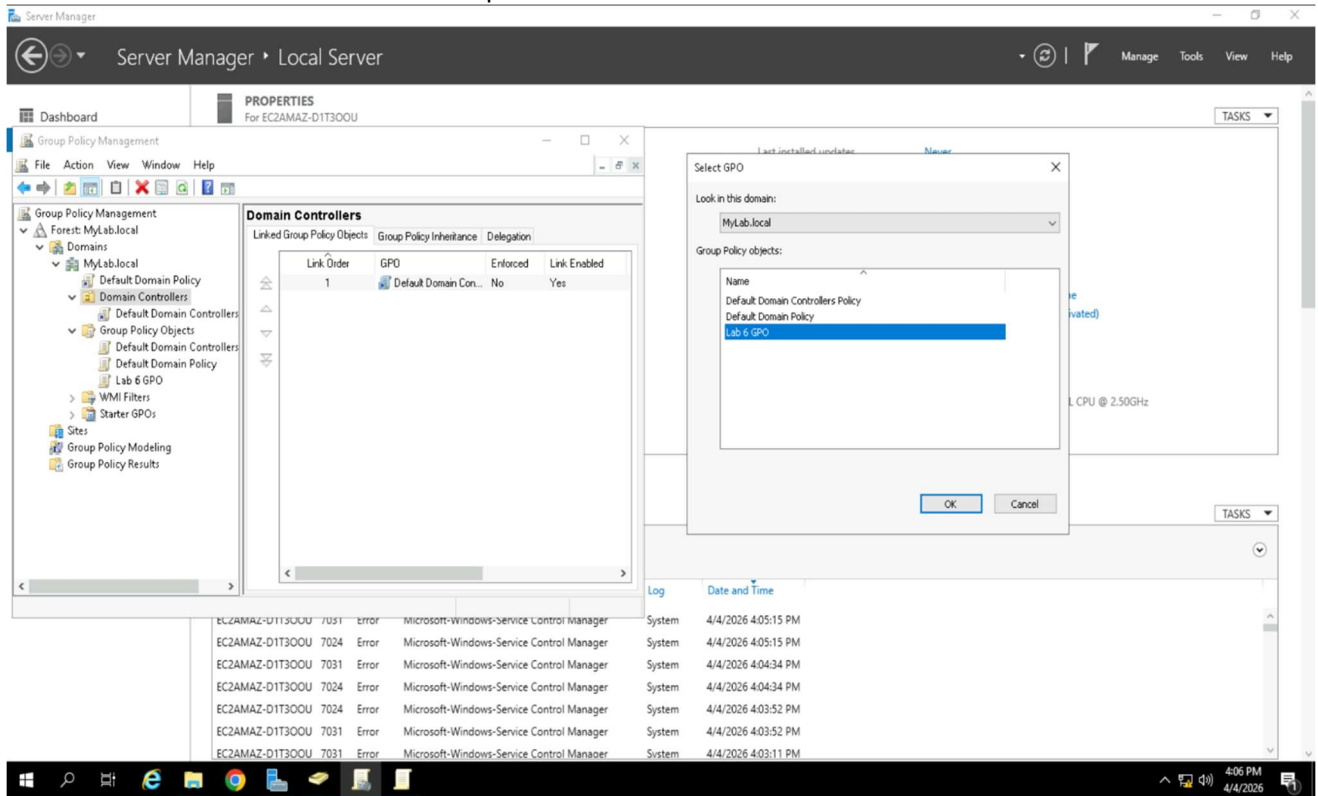


3. Briefly describe the screenshot, explaining the task or tool used.

**The screenshot above demonstrates the successful deployment of a new software package and overall policy configuration. This is another critical task undertaken during Windows server administration. Deploying new software, Google Chrome in this case, installs the application across the network domain or to specifically targeted users or workstations. This process implements efficiency and consistency in network operations.**

### Task 3. [12.5 points]

1. The most relevant task you can complete/perform.
2. Provide a screenshot of the completed task.

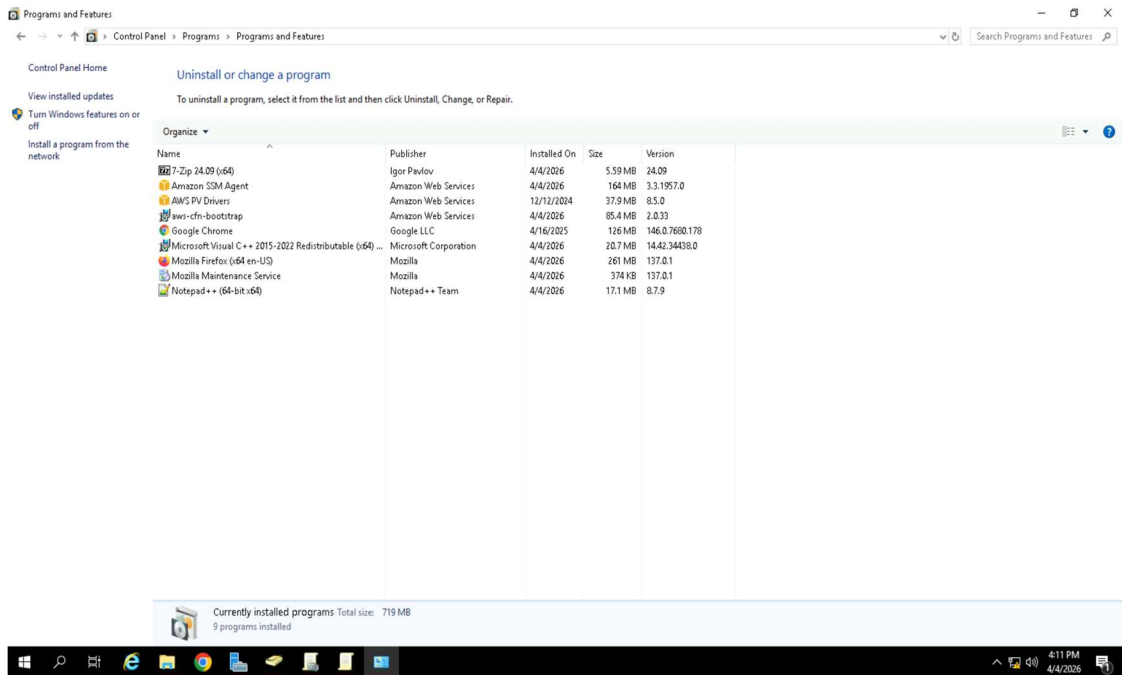


3. Briefly describe the screenshot, explaining the task or tool used.

**One of the final steps in this software deployment process is to link the GPO to the desired Organizational Unit (OU). This task allows an administrator to assign GPOs to a specific user, group, computer, etc.**

#### Task 4. [12.5 points]

1. The most relevant task you can complete/perform.
2. Provide a screenshot of the completed task.



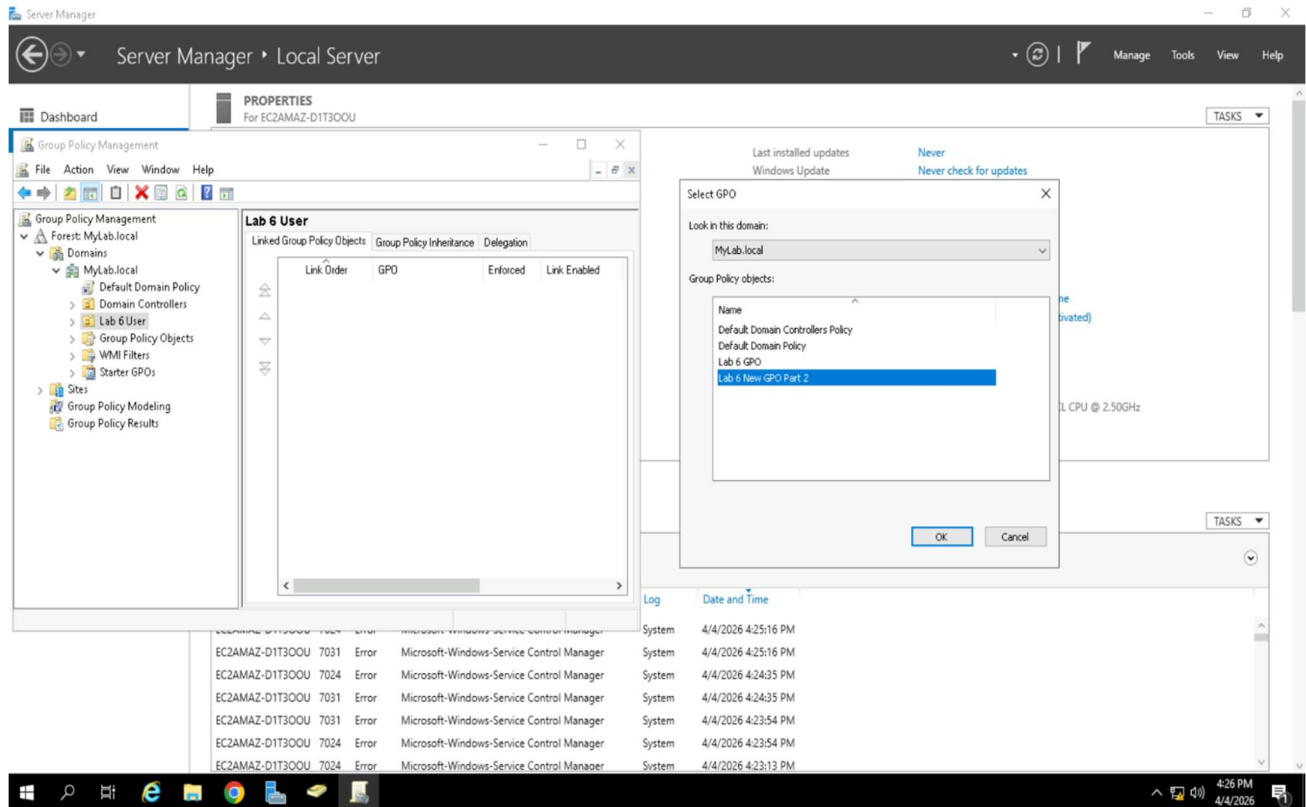
3. Briefly describe the screenshot, explaining the task or tool used.

**The image above illustrates the successful installation of Google Chrome on the client computer as the lab intended.**



## Task 6. [12.5 points]

1. The most relevant task you can complete/perform.
2. Provide a screenshot of the completed task.

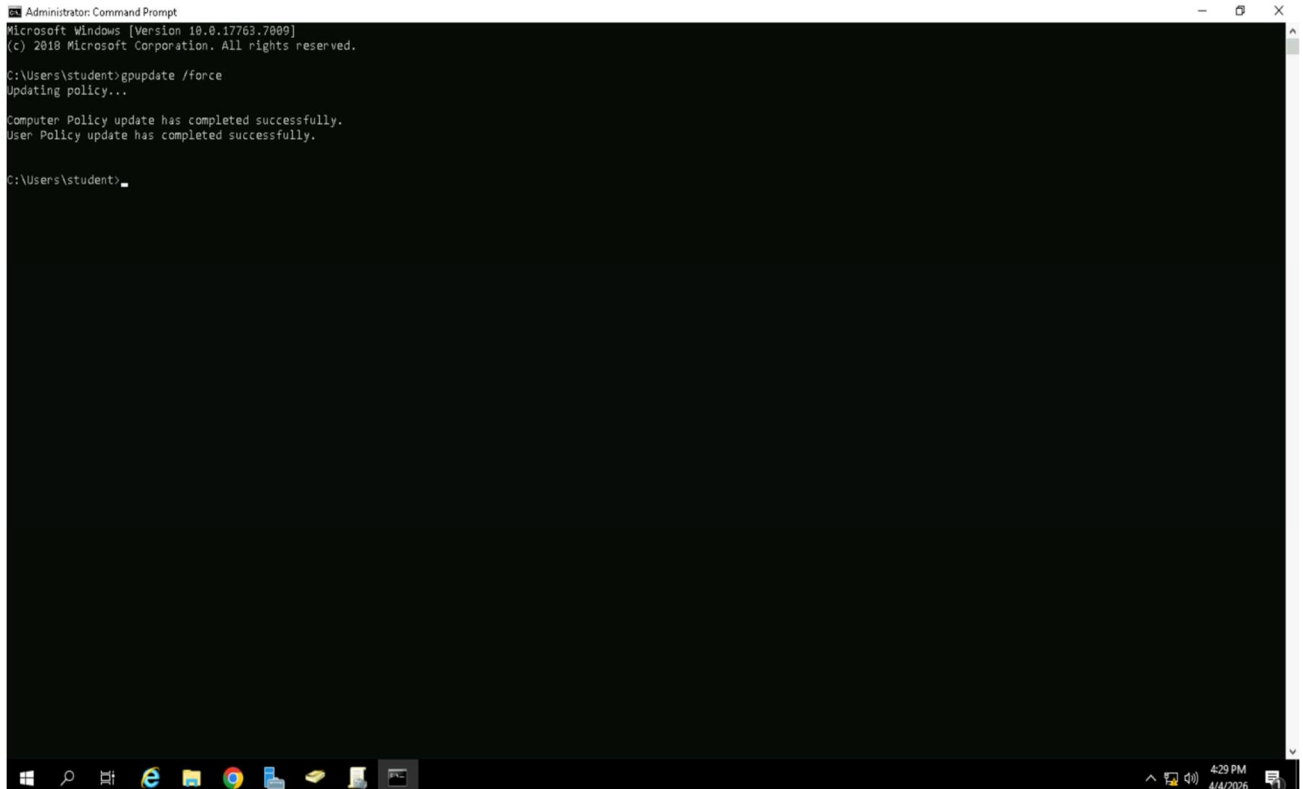


3. Briefly describe the screenshot, explaining the task or tool used.

**The image above illustrates the linking of an existing GPO to a newly created *Lab 6 User* Organizational Unit (OU).**

## Task 7. [12.5 points]

1. The most relevant task you can complete/perform.
2. Provide a screenshot of the completed task.



```
Administrator: Command Prompt
Microsoft Windows [Version 10.0.17763.7800]
(c) 2018 Microsoft Corporation. All rights reserved.

C:\Users\student>gpupdate /force
Updating policy...

Computer Policy update has completed successfully.
User Policy update has completed successfully.

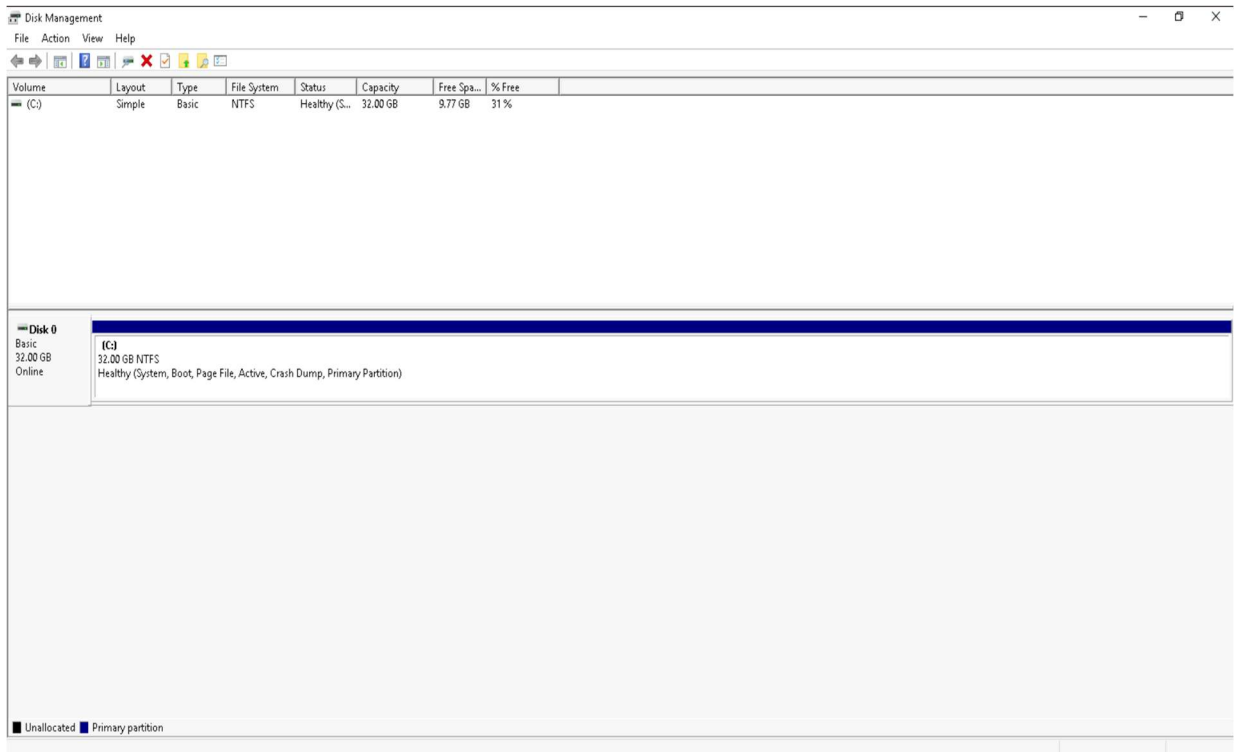
C:\Users\student>
```

3. Briefly describe the screenshot, explaining the task or tool used.

**The screenshot shown above displays the cmd prompt command necessary to manually update the group policy for a specific user or group. Using this command allows the administrator to bypass the default wait period for group policy updates to take place. *Gpupdate* immediately applies group policy configuration changes and refreshes all group policy settings.**

## Task 8. [12.5 points]

1. The most relevant task you can complete/perform.
2. Provide a screenshot of the completed task.



3. Briefly describe the screenshot, explaining the task or tool used.

**The image above illustrates the successful deletion of a partition on the client computer. Being capable of deleting a partition means that the client computer has administrator privileges that are provided by the *Key Admins* group. Overall local group policy configuration operated as intended and was successful.**