

# CYSE 608: Hands-On Lab Report 8

Name: **BRYANT WATKINS**

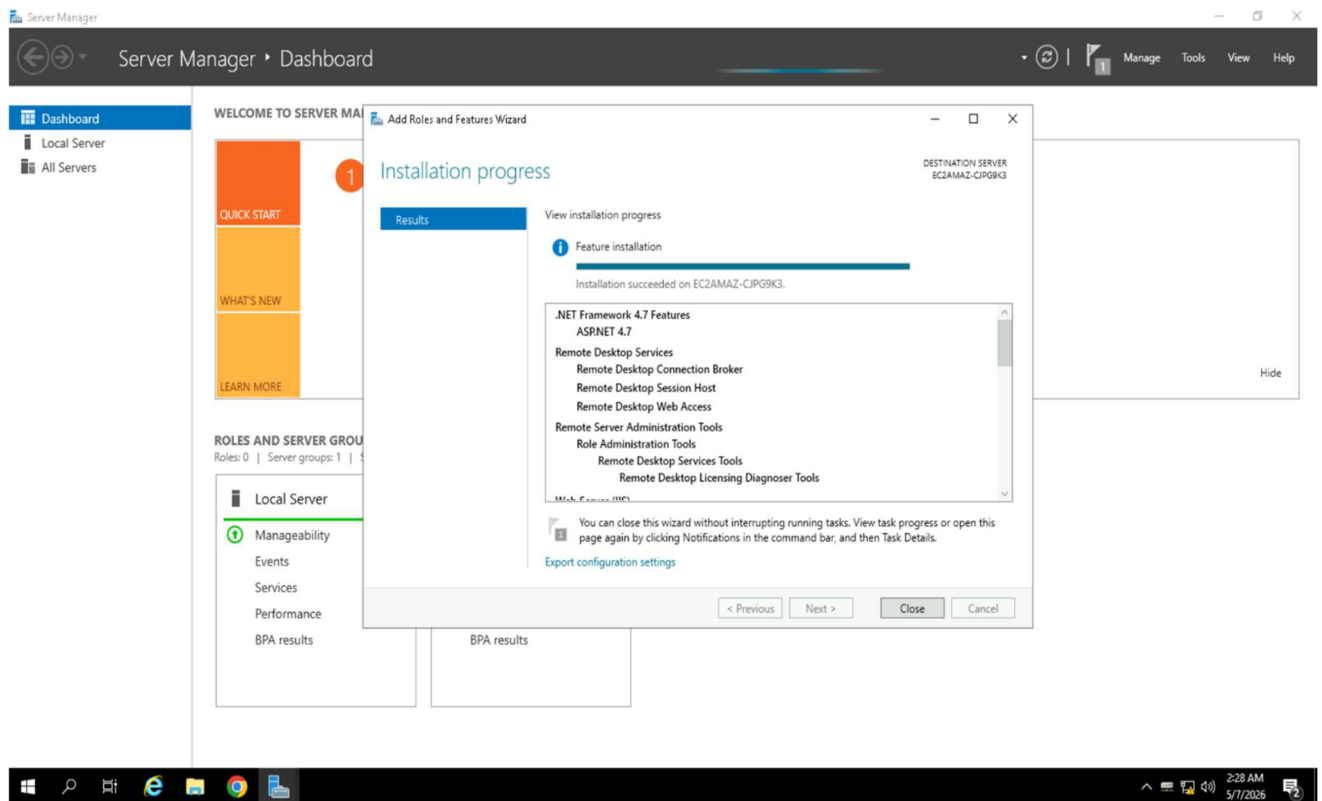
**Directions:** Review the tutorial video found in Module 8 and complete the following tasks. Submit your completed report in Canvas.

## Install and Configure Remote Desktop Services RDS on Windows Server 2019

**Total Points = 50 points**

### Task 1. [25 points]

1. The most relevant task you can complete/perform.
2. Provide a screenshot of the completed task.

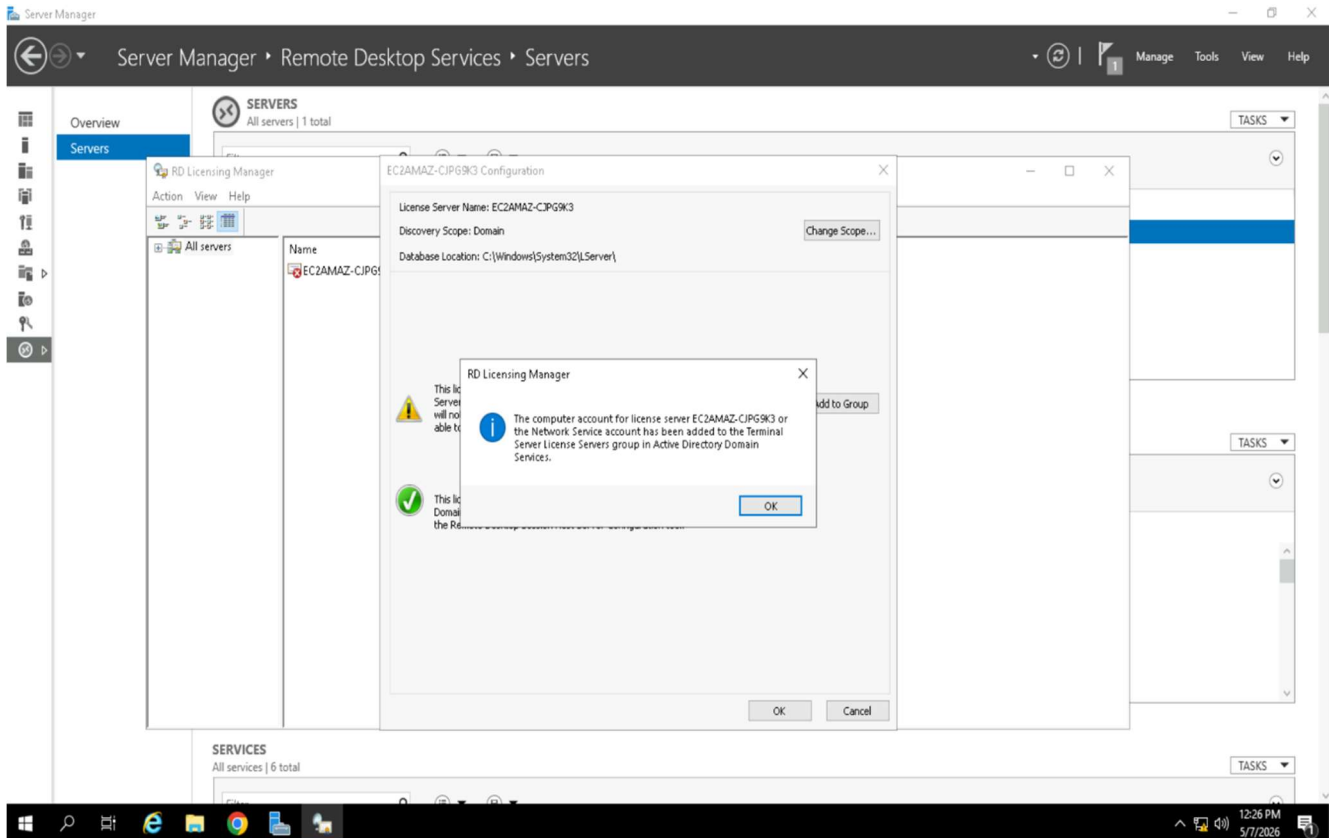


3. Briefly describe the screenshot, explaining the task or tool used.

**The image above illustrates the successful installation of Remote Desktop Services. Remote Desktop Services is an incredibly useful and convenient tool that may allow users or administrators to access workstations remotely. The workstations may be – virtual machine desktops, full desktops, or session-based desktops.**

## Task 2. [25 points]

1. The most relevant task you can complete/perform.
2. Provide a screenshot of the completed task.

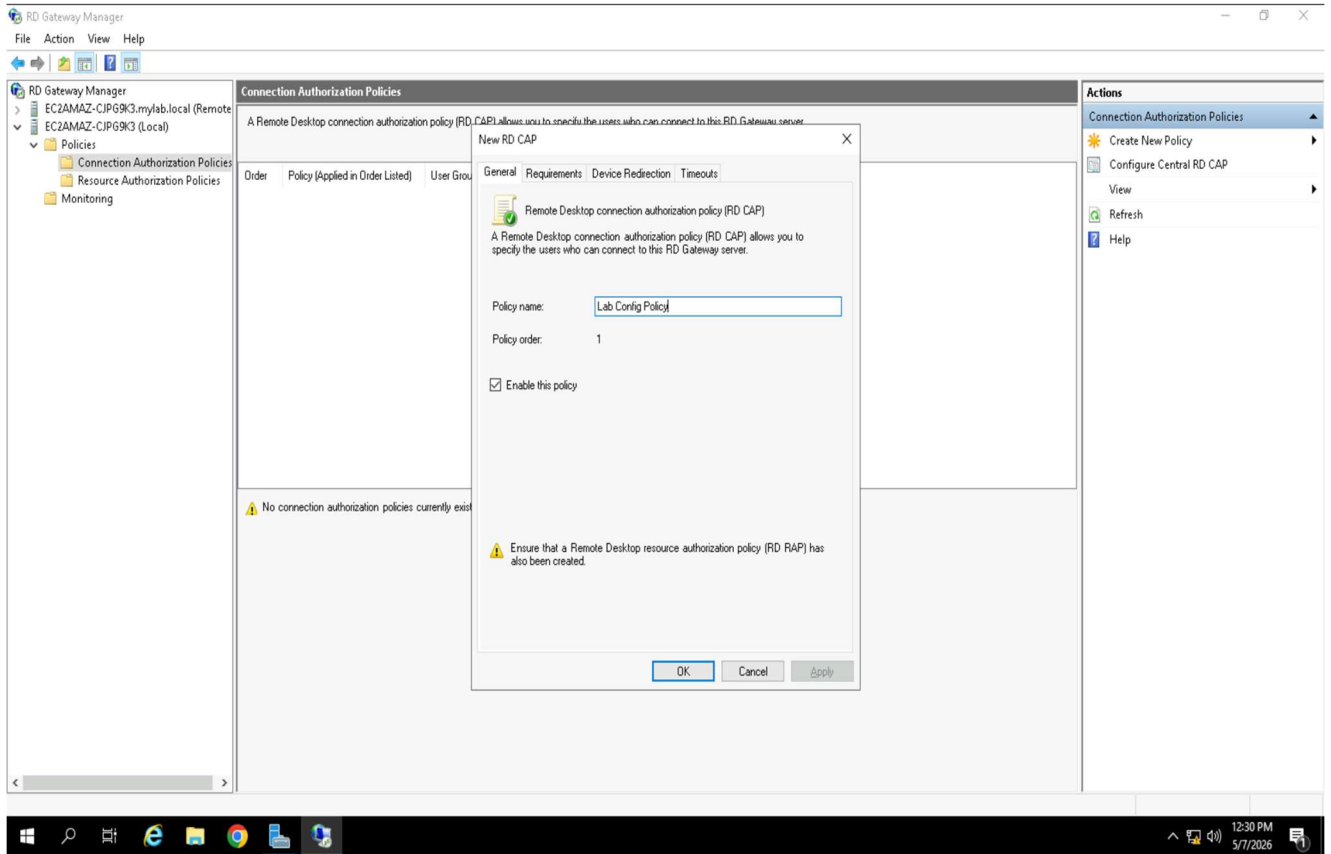


3. Briefly describe the screenshot, explaining the task or tool used.

**The screenshot seen above illustrates the success of adding the computer account for the server to the Terminal Server License Servers group in Active Directory Domain Services. Completing this task allows permissions for the server to update user attributes as needed. This also allows for adequate Per User CAL (Client Access Licensing) tracking.**

### Task 3. [25 points]

1. The most relevant task you can complete/perform.
2. Provide a screenshot of the completed task.

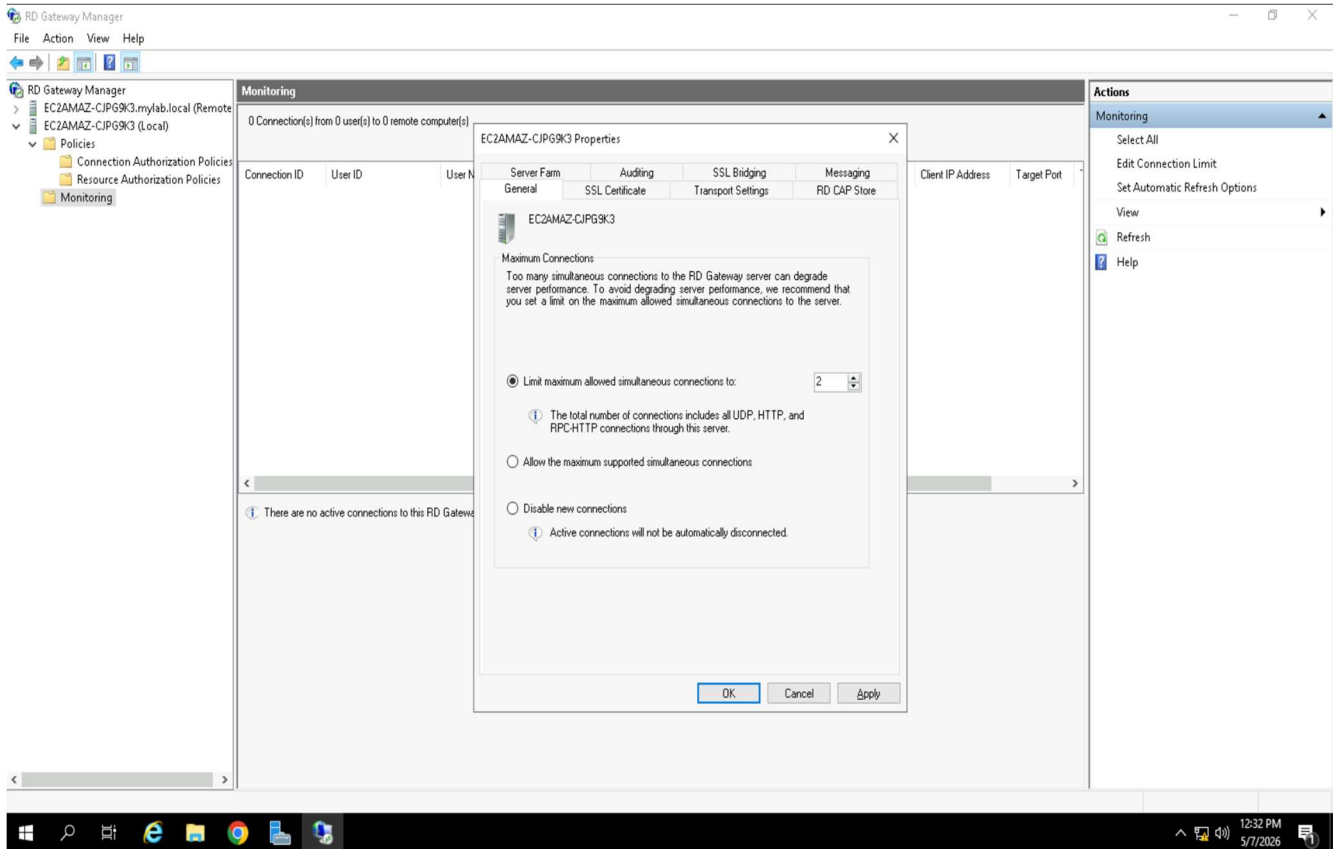


3. Briefly describe the screenshot, explaining the task or tool used.

**The image showcased above demonstrates the successful creation of a new Remote Desktop Connection Authorization Policy. These policies are critical to the functioning of Remote Desktop Services, as they dictate connection access to the Remote Desktop Gateway as well as other internal resources.**

#### Task 4. [25 points]

1. The most relevant task you can complete/perform.
2. Provide a screenshot of the completed task.



3. Briefly describe the screenshot, explaining the task or tool used.

**The above screenshot showcases configuration of the server for Remote Desktop Services. I specifically configured the *maximum number of simultaneous connections allowed*. Limiting the maximum number of simultaneous connections allowed is a critical feature, as it ensures compliance with licensing requirements and optimizes server performance.**