

OLD DOMINION UNIVERSITY

CYSE 270 LINUX SYSTEM FOR CYBERSECURITY

---

## Assignment #1 Create a Virtual Machine

---

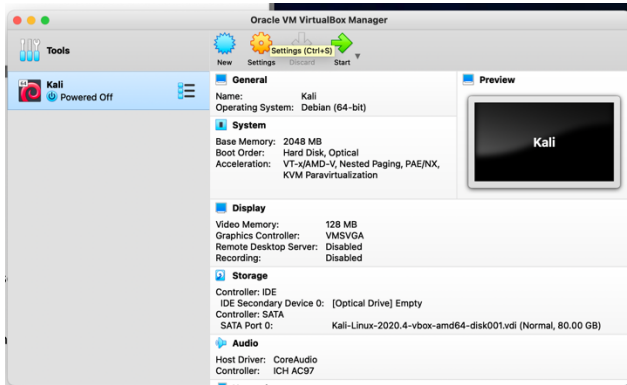
Joy Diggs

00491693

---

## TASK A

1. Install a VM in Oracle Virtual Box.

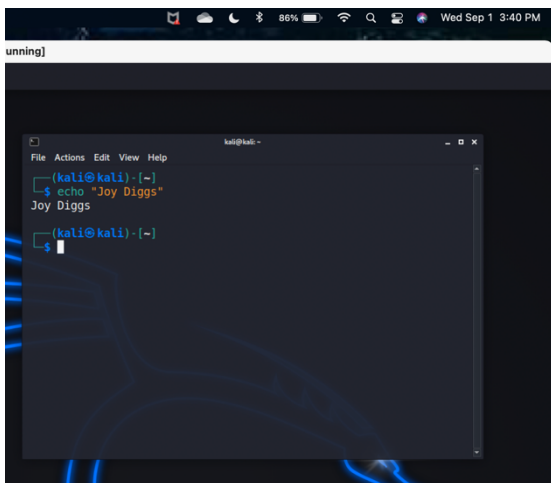


Above is the screenshot of my VM that I loaded to VirtualBox. It is a Kali Linux distro.

---

## TASK B

2. Echo "your\_name"

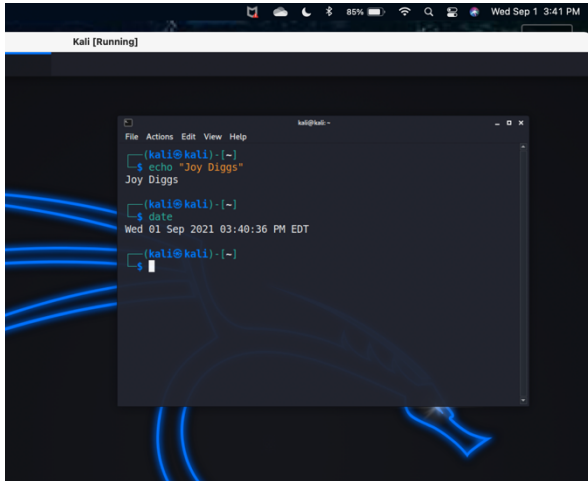


Above is the screenshot of the echo command with my name on Kali Linux. The echo command displays a line of text or it can execute a shell script depending on what you put in-between the quotes.

---

## TASK B

### 3. Date command

A screenshot of a Kali Linux desktop environment. A terminal window titled 'kali@kali: ~' is open, showing the following commands and output:

```
(kali@kali)-[~]  
$ echo "Joy Diggs"  
Joy Diggs  
  
(kali@kali)-[~]  
$ date  
Wed 01 Sep 2021 03:40:36 PM EDT  
  
(kali@kali)-[~]  
$
```

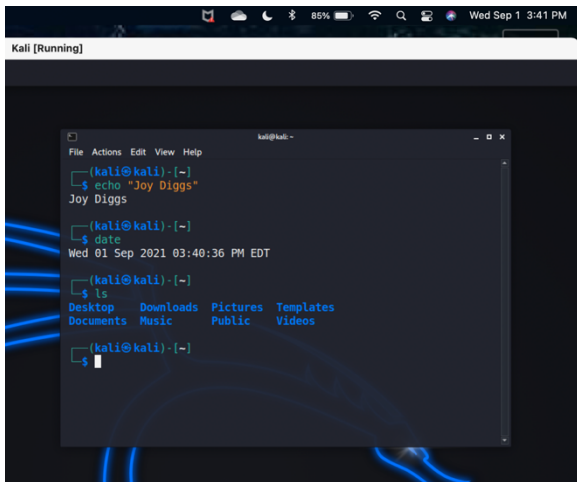
The terminal window is overlaid on a desktop background featuring a blue and black abstract design. The top of the screen shows a taskbar with various icons and a system clock indicating 'Wed Sep 1 3:41 PM'.

Above is the screenshot of the date command on Kali Linux. The date command shows the current date and time of when the command is running.

---

## TASK B

### 4. Ls command.

A screenshot of a Kali Linux desktop environment, similar to the one above. A terminal window titled 'kali@kali: ~' is open, showing the following commands and output:

```
(kali@kali)-[~]  
$ echo "Joy Diggs"  
Joy Diggs  
  
(kali@kali)-[~]  
$ date  
Wed 01 Sep 2021 03:40:36 PM EDT  
  
(kali@kali)-[~]  
$ ls  
Desktop  Downloads  Pictures  Templates  
Documents Music     Public    Videos  
  
(kali@kali)-[~]  
$
```

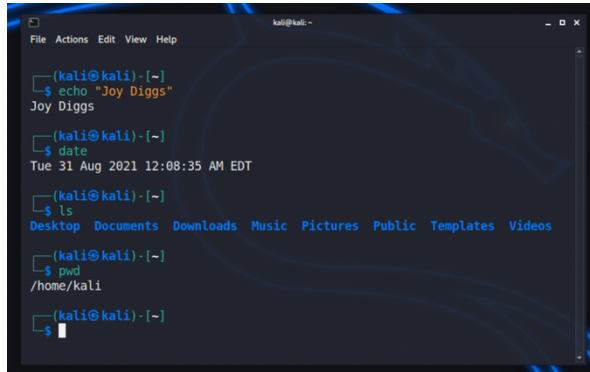
The terminal window is overlaid on the same desktop background. The top of the screen shows a taskbar with various icons and a system clock indicating 'Wed Sep 1 3:41 PM'.

Above is the screenshot of the ls command on Kali Linux. The ls command lists the directory contents of the current directory you are in.

---

## TASK B

## 5. Pwd command

A screenshot of a Kali Linux terminal window. The window has a menu bar with 'File', 'Actions', 'Edit', 'View', and 'Help'. The terminal shows a series of commands and their outputs: 1. Prompt: (kali@kali)-[~] 2. Command: \$ echo "Joy Diggs" 3. Output: Joy Diggs 4. Prompt: (kali@kali)-[~] 5. Command: \$ date 6. Output: Tue 31 Aug 2021 12:08:35 AM EDT 7. Prompt: (kali@kali)-[~] 8. Command: \$ ls 9. Output: Desktop Documents Downloads Music Pictures Public Templates Videos 10. Prompt: (kali@kali)-[~] 11. Command: \$ pwd 12. Output: /home/kali 13. Prompt: (kali@kali)-[~] 14. Command: \$ (with a cursor)

```

(kali@kali)-[~]
$ echo "Joy Diggs"
Joy Diggs
(kali@kali)-[~]
$ date
Tue 31 Aug 2021 12:08:35 AM EDT
(kali@kali)-[~]
$ ls
Desktop Documents Downloads Music Pictures Public Templates Videos
(kali@kali)-[~]
$ pwd
/home/kali
(kali@kali)-[~]
$

```

Above is the screenshot of the pwd command in Kali Linux. The pwd command shows the current working directory that you are in.

---