

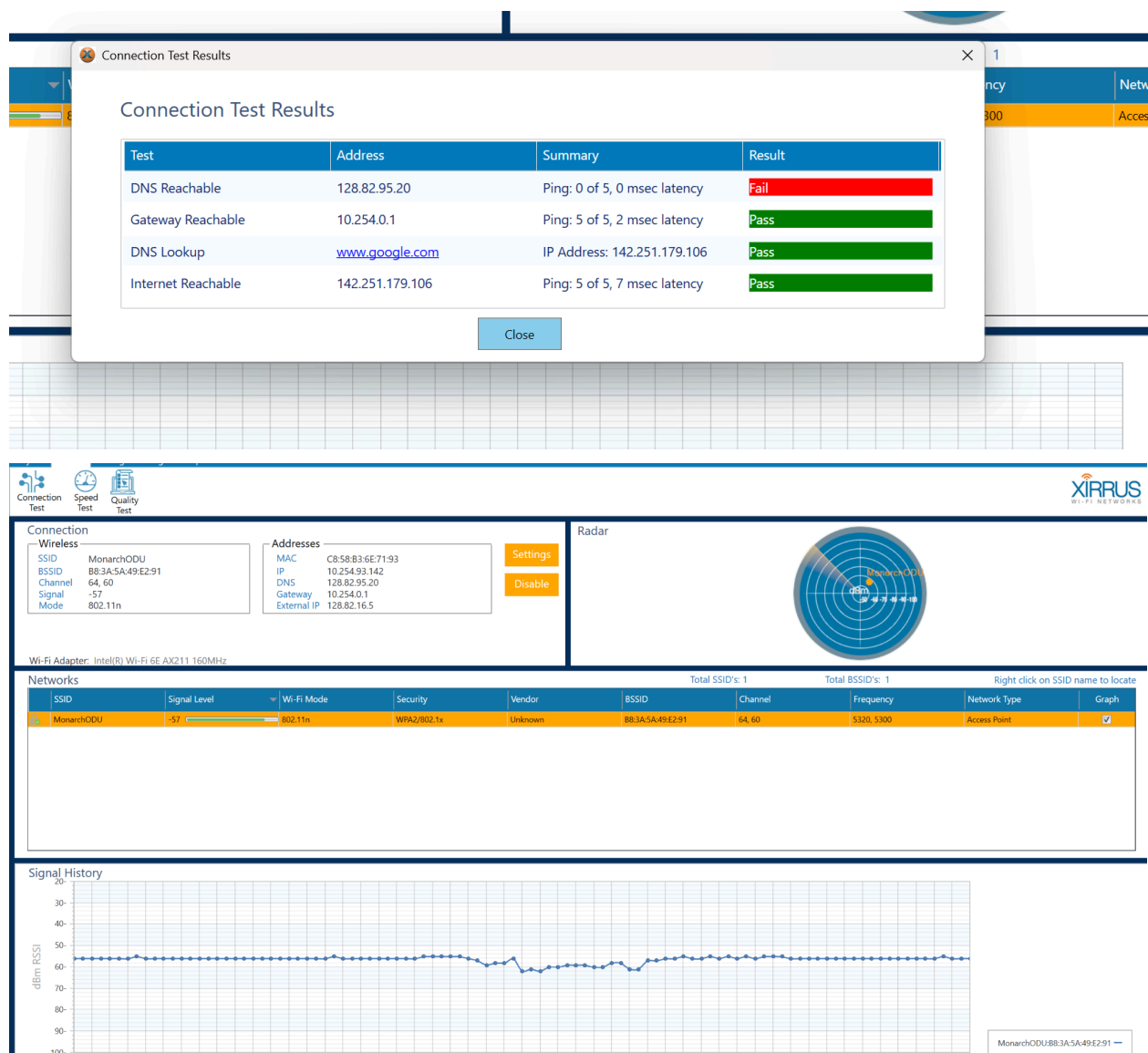
1. How would you locate an access point (despite the limitations of the radar window)?

I would locate the access point by looking for the wifi network with the strongest signal and then checking the radar which should give you its approximate location

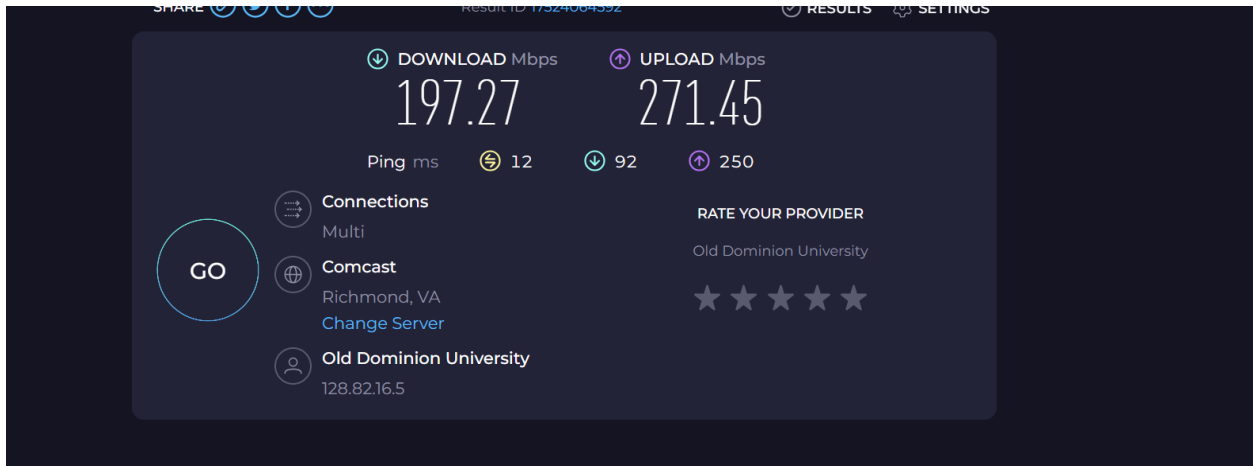
2. There is a value of -44 dBm for signal strength. How good is this?

A signal strength of -44 dbm is a very strong

3. What information does the Connection Test give you? (Attach screenshot)



4. What information does the Speed Test give you? (Attach screenshot from speedtest.net)



5. What information does the Quality Test give you? (Attach screenshot from SpeedTest desktop for Windows or MacOS, download link at pingtest.net)

