

# CYSE 608: Hands-On Lab Report 5

**Name:** Devin Johnson

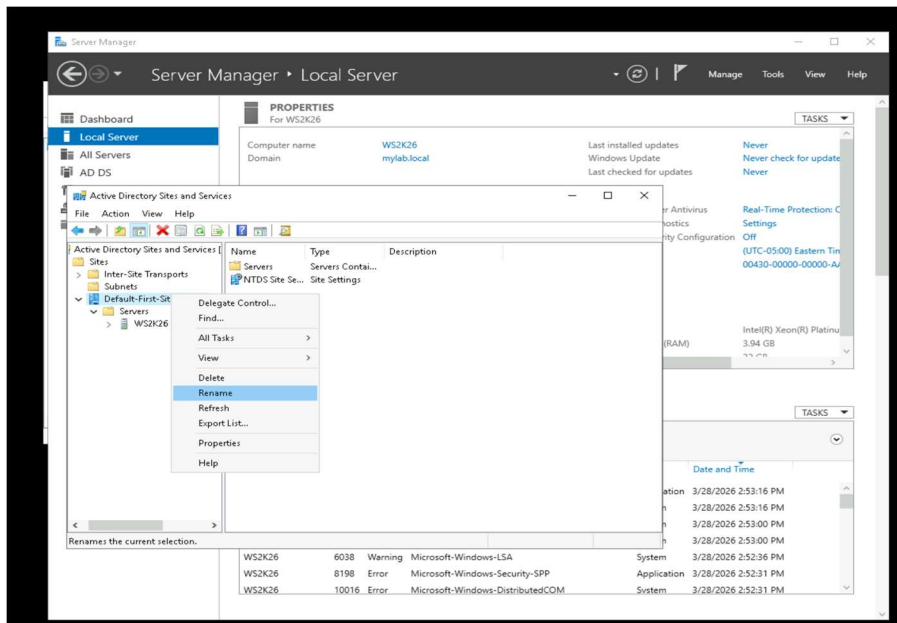
**Directions:** Review the tutorial video found in Module 5 and complete the following tasks. Submit your completed report in Canvas.

## How to Create Active Directory Sites and Subnets

**Total Points = 50 points**

### Task 1. [12.5 points]

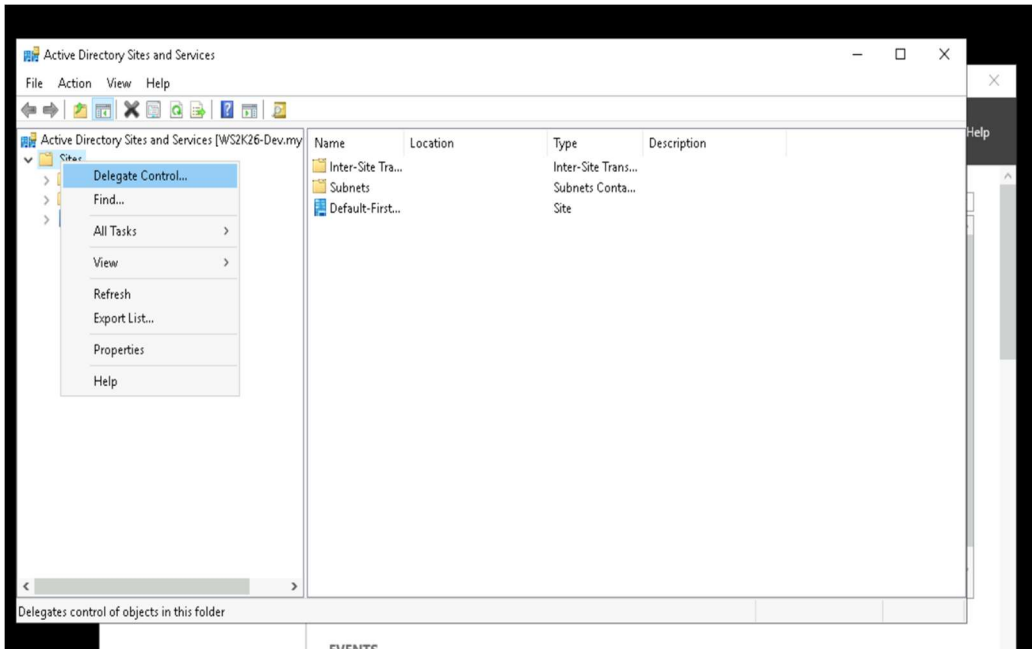
1. The most relevant task you can complete/perform.
2. Provide a screenshot of the completed task.



3. Briefly describe the screenshot, explaining the task or tool used.  
In this step we change the default name of the site

### Task 2. [12.5 points]

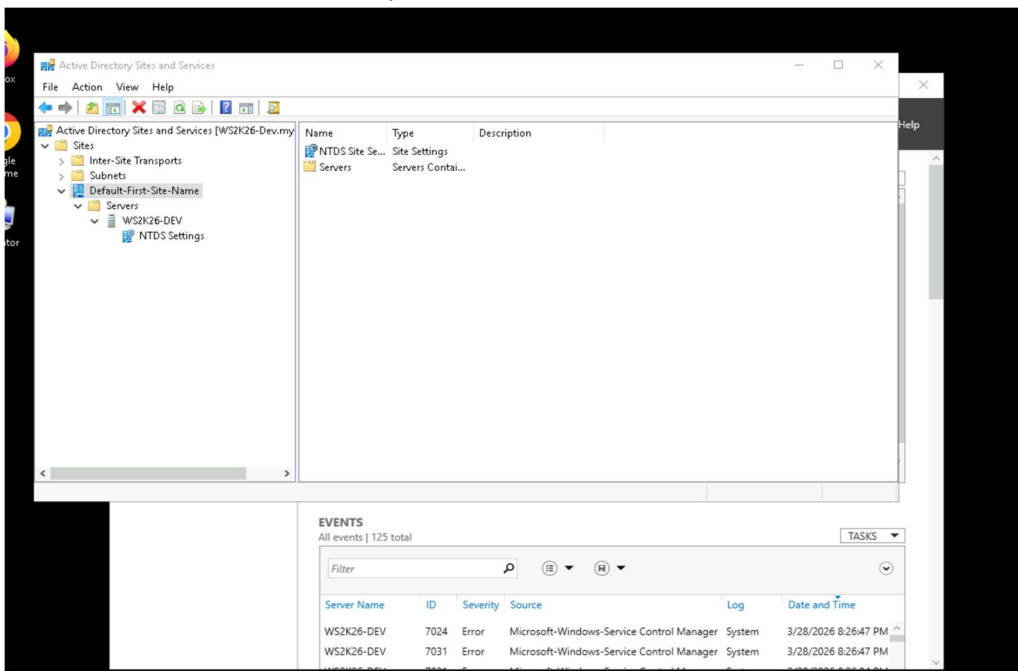
1. The most relevant task you can complete/perform.
2. Provide a screenshot of the completed task.



- Briefly describe the screenshot, explaining the task or tool used.  
I do not have the option to add new sites like in the video. I've had to uninstall and reinstall the environment in CyberRange multiple times.

### Task 3. [12.5 points]

- The most relevant task you can complete/perform.
- Provide a screenshot of the completed task.

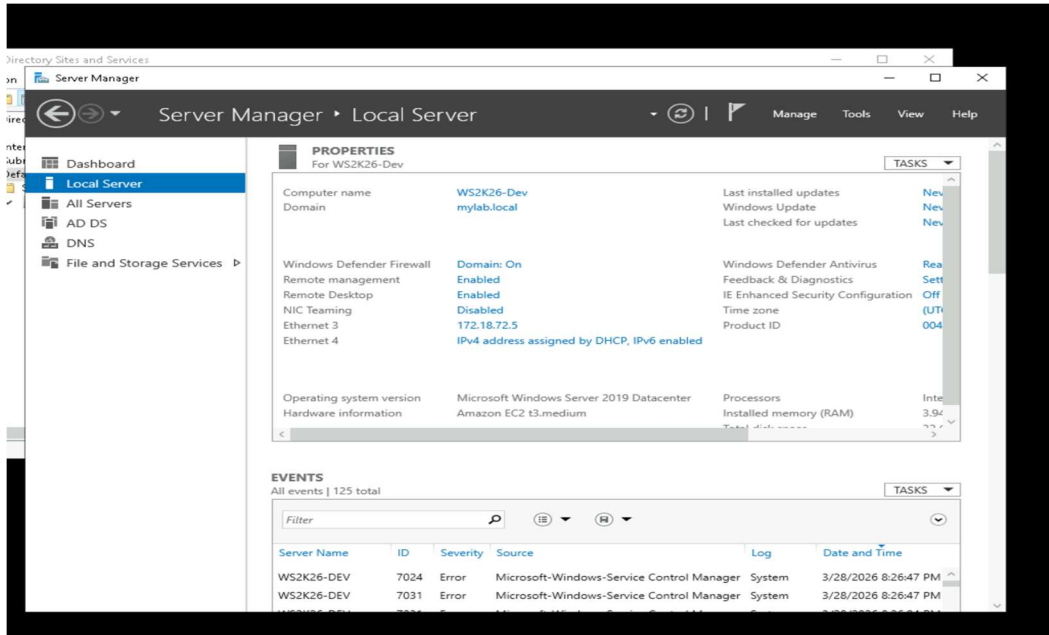


- Briefly describe the screenshot, explaining the task or tool used.

I've gone through the video to get familiar. I'm unable to screenshot following through because I'm unable to do the task like the video.

#### Task 4. [12.5 points]

1. The most relevant task you can complete/perform.
2. Provide a screenshot of the completed task.



3. Briefly describe the screenshot, explaining the task or tool used.

### Create and Manage AD User Account Using PowerShell

**Total Point = 50 points**

#### Task 5. [12.5 points]

1. The most relevant task you can complete/perform.
2. Provide a screenshot of the completed task.

```
Administrator: Windows PowerShell
Windows PowerShell
Copyright (C) Microsoft Corporation. All rights reserved.

PS C:\Users\student> Import-Module ActiveDirectory
PS C:\Users\student> cd\
PS C:\> New-ADUser user3 -UserPrincipalName user3@mylab.local
```

3. Briefly describe the screenshot, explaining the task or tool used.  
In this step we are adding a user using PowerShell

#### Task 6. [12.5 points]

1. The most relevant task you can complete/perform.
2. Provide a screenshot of the completed task.

```
Administrator: Windows PowerShell
Windows PowerShell
Copyright (C) Microsoft Corporation. All rights reserved.

PS C:\Users\student> Import-Module ActiveDirectory
PS C:\Users\student> cd\
PS C:\> New-ADUser user3 -UserPrincipalName user3@mylab.local
PS C:\>
PS C:\> Get-ADUser user3

DistinguishedName : CN=user3,CN=Users,DC=mylab,DC=local
Enabled           : False
GivenName        :
Name             : user3
ObjectClass      : user
ObjectGUID       : 9c212982-ef7f-49ef-a812-d74e7680db3f
SamAccountName   : user3
SID              : S-1-5-21-789905010-940406411-2119786894-1113
Surname          :
UserPrincipalName : user3@mylab.local

PS C:\> Set-ADAccountPassword -Identity user3
Please enter the current password for 'CN=user3,CN=Users,DC=mylab,DC=local'
Password: █
```

3. Briefly describe the screenshot, explaining the task or tool used.  
In this step, we are adding the passwords for the user accounts

#### Task 7. [12.5 points]

1. The most relevant task you can complete/perform.
2. Provide a screenshot of the completed task.

```
PS C:\> Get-ADUser user3 -Properties enabled
```

3. Briefly describe the screenshot, explaining the task or tool used.  
In this step we are enabling the user accounts

#### Task 8. [12.5 points]

4. The most relevant task you can complete/perform.
5. Provide a screenshot of the completed task.

```
PS C:\> Set-ADUser user3 -Department Administration
```

6. Briefly describe the screenshot, explaining the task or tool used.  
In this step we are placing departments for the users in AD