

CYSE 270 Lab 7: File Management

Part 1

Steps 1, 2, and 3

```
(demetrius@kali)-[~]
$ sudo ls /dev/sd*
/dev/sda /dev/sda1 /dev/sda2 /dev/sda5 /dev/sdb

(demetrius@kali)-[~]
$ sudo fdisk -l
Disk /dev/sda: 25 GiB, 26843545600 bytes, 52428800 sectors
Disk model: VBOX HARDDISK
Units: sectors of 1 * 512 = 512 bytes
Sector size (logical/physical): 512 bytes / 512 bytes
I/O size (minimum/optimal): 512 bytes / 512 bytes
Disklabel type: dos
Disk identifier: 0xbbe7df08

Device Boot      Start         End      Sectors  Size Id Type
/dev/sda1 *        2048     49641471   49639424  23.7G 83 Linux
/dev/sda2          49643518   52426751    2783234    1.3G  f W95 Ext'd (LBA)
/dev/sda5          49643520   52426751    2783232    1.3G  82 Linux swap / Solaris

Disk /dev/sdb: 1 GiB, 1073741824 bytes, 2097152 sectors
Disk model: VBOX HARDDISK
Units: sectors of 1 * 512 = 512 bytes
Sector size (logical/physical): 512 bytes / 512 bytes
I/O size (minimum/optimal): 512 bytes / 512 bytes
Disklabel type: dos
Disk identifier: 0x0a194fa0

(demetrius@kali)-[~]
$ sudo parted -l
Model: ATA VBOX HARDDISK (scsi)
Disk /dev/sda: 26.8GB
Sector size (logical/physical): 512B/512B
Partition Table: msdos
Disk Flags:

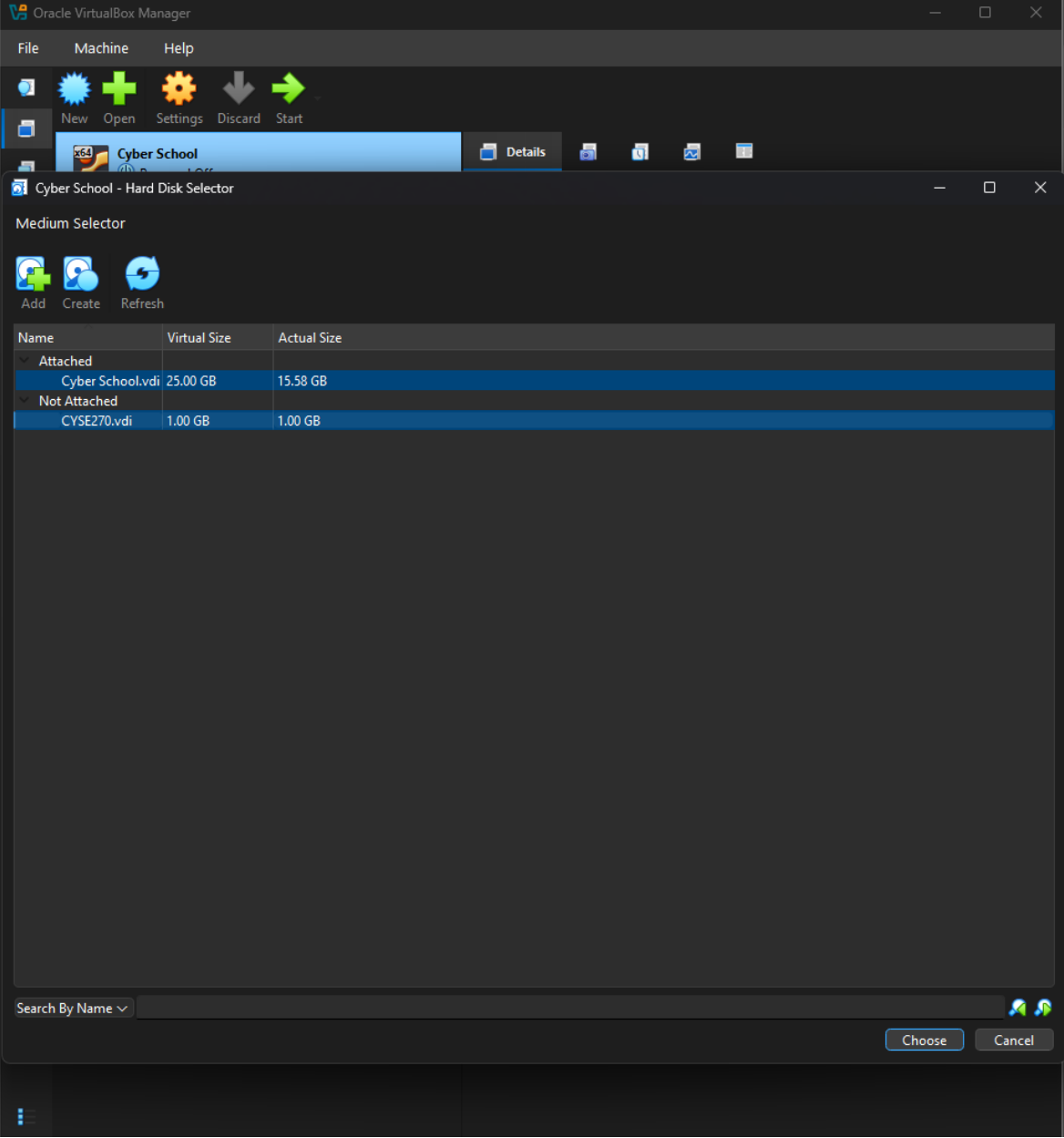
Number  Start   End     Size    Type     File system  Flags
  1      1049kB  25.4GB  25.4GB  primary  ext4         boot
  2      25.4GB  26.8GB  1425MB  extended lba
  5      25.4GB  26.8GB  1425MB  logical  linux-swap(v1) swap

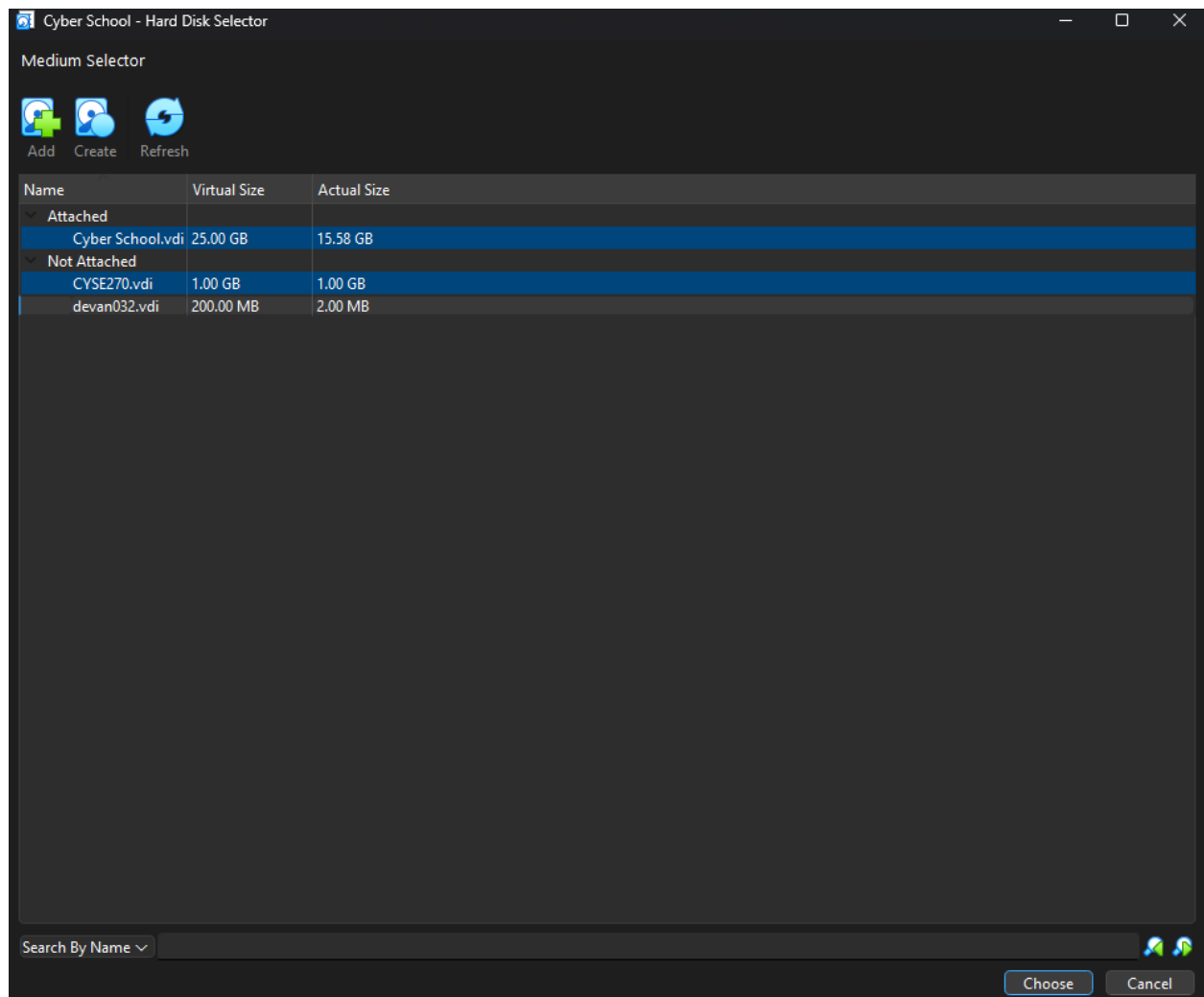
Model: ATA VBOX HARDDISK (scsi)
Disk /dev/sdb: 1074MB
Sector size (logical/physical): 512B/512B
Partition Table: msdos
Disk Flags:

Number  Start   End     Size    Type     File system  Flags
```

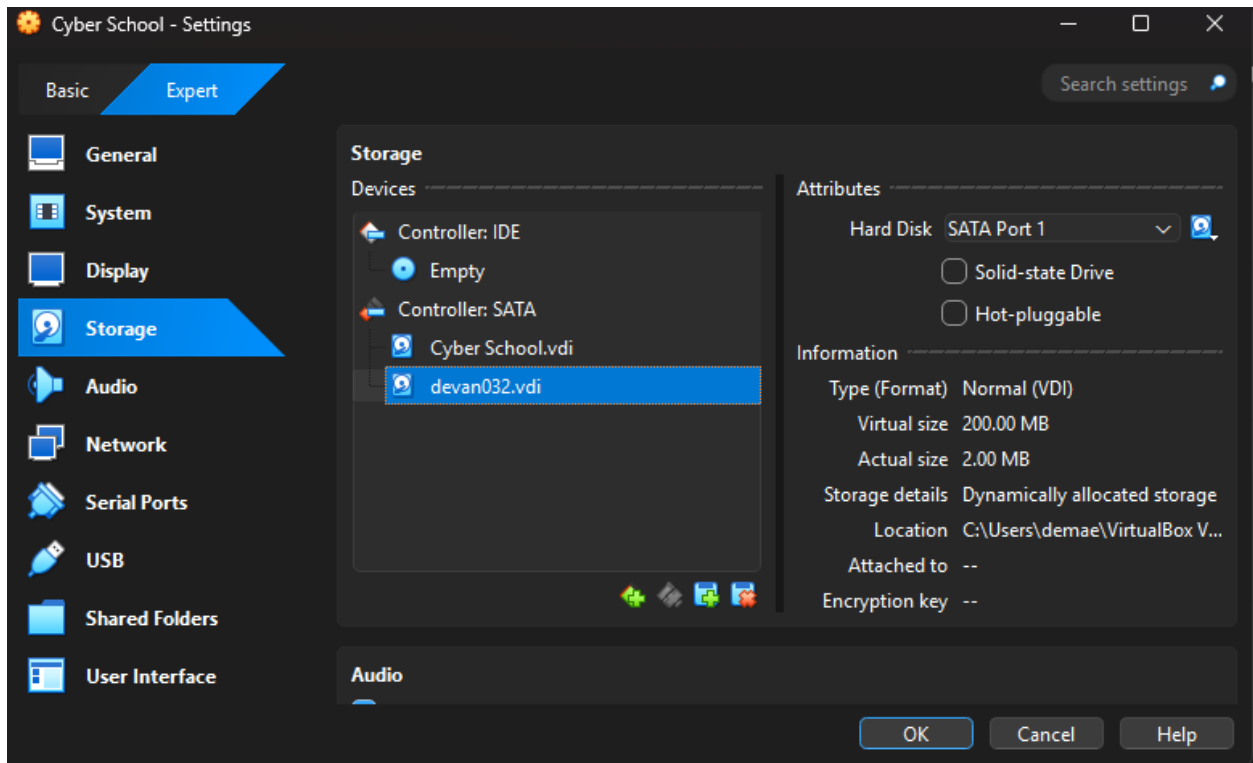
Part 2

Step 1



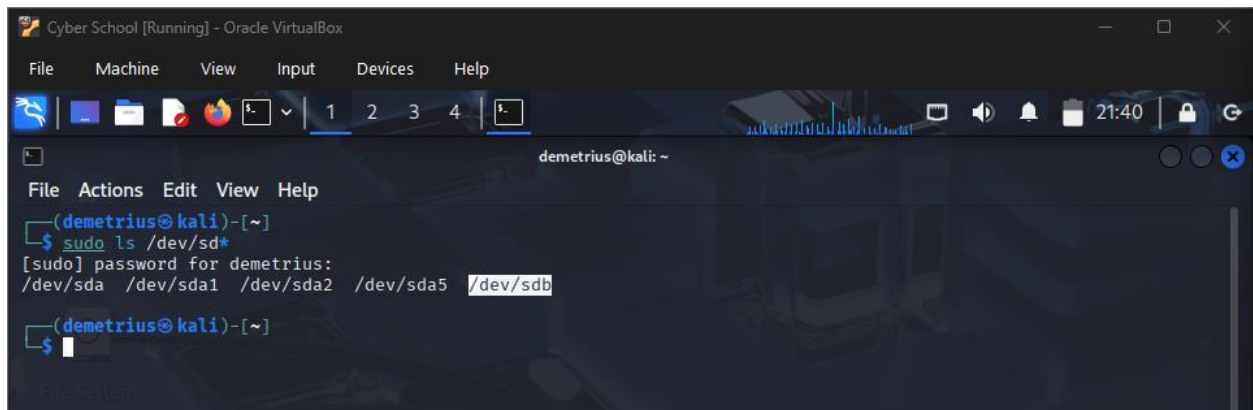


Step 2



Step 3

A)



B)

```
(demetrius@kali)-[~]
$ sudo fdisk -l
Disk /dev/sda: 25 GiB, 26843545600 bytes, 52428800 sectors
Disk model: VBOX HARDDISK
Units: sectors of 1 * 512 = 512 bytes
Sector size (logical/physical): 512 bytes / 512 bytes
I/O size (minimum/optimal): 512 bytes / 512 bytes
Disklabel type: dos
Disk identifier: 0xbbe7df08

Device      Boot    Start        End    Sectors    Size Id Type
/dev/sda1   *          2048    49641471   49639424   23.7G 83 Linux
/dev/sda2             49643518   52426751    2783234     1.3G  f W95 Ext'd (LBA)
/dev/sda5             49643520   52426751    2783232     1.3G  82 Linux swap / Solaris

Disk /dev/sdb: 200 MiB, 209715200 bytes, 409600 sectors
Disk model: VBOX HARDDISK
Units: sectors of 1 * 512 = 512 bytes
Sector size (logical/physical): 512 bytes / 512 bytes
I/O size (minimum/optimal): 512 bytes / 512 bytes

(demetrius@kali)-[~]
$
```

C)

```
(demetrius@kali)-[~]
$ sudo parted -l
Model: ATA VBOX HARDDISK (scsi)
Disk /dev/sda: 26.8GB
Sector size (logical/physical): 512B/512B
Partition Table: msdos
Disk Flags:

Number  Start   End     Size    Type     File system  Flags
  1      1049kB  25.4GB  25.4GB  primary  ext4          boot
  2      25.4GB  26.8GB  1425MB  extended lba
  5      25.4GB  26.8GB  1425MB  logical  linux-swap(v1) swap

Error: /dev/sdb: unrecognised disk label
Model: ATA VBOX HARDDISK (scsi)
Disk /dev/sdb: 210MB
Sector size (logical/physical): 512B/512B
Partition Table: unknown
Disk Flags:
```

Part 3

Step 1

```
Cyber School [Running] - Oracle VirtualBox
File Machine View Input Devices Help
1 2 3 4

demetrius@kali: ~
CPU usage: 43.5%
File Actions Edit View Help

(demetrius@kali)-[~]
$ sudo fdisk /dev/sdb

Welcome to fdisk (util-linux 2.41).
Changes will remain in memory only, until you decide to write them.
Be careful before using the write command.

Device does not contain a recognized partition table.
Created a new DOS (MBR) disklabel with disk identifier 0xe3a20c6f.

Command (m for help): n
Partition type
  p   primary (0 primary, 0 extended, 4 free)
  e   extended (container for logical partitions)
Select (default p): p
Partition number (1-4, default 1): 1
First sector (2048-409599, default 2048):
Last sector, +/-sectors or +/-size{K,M,G,T,P} (2048-409599, default 409599):

Created a new partition 1 of type 'Linux' and of size 199 MiB.

Command (m for help):

demetrius@kali: ~
File Actions Edit View Help

(demetrius@kali)-[~]
$ sudo fdisk -l

Disk /dev/sda: 25 GiB, 26843545600 bytes, 52428800 sectors
Disk model: VBOX HARDDISK
Units: sectors of 1 * 512 = 512 bytes
Sector size (logical/physical): 512 bytes / 512 bytes
I/O size (minimum/optimal): 512 bytes / 512 bytes
Disklabel type: dos
Disk identifier: 0xbbe7df08

Device Boot Start End Sectors Size Id Type
/dev/sda1 * 2048 49641471 49639424 23.7G 83 Linux
/dev/sda2 49643518 52426751 2783234 1.3G f W95 Ext'd (LBA)
/dev/sda5 49643520 52426751 2783232 1.3G 82 Linux swap / Solaris

Disk /dev/sdb: 200 MiB, 209715200 bytes, 409600 sectors
Disk model: VBOX HARDDISK
Units: sectors of 1 * 512 = 512 bytes
Sector size (logical/physical): 512 bytes / 512 bytes
I/O size (minimum/optimal): 512 bytes / 512 bytes
Disklabel type: dos
Disk identifier: 0xe3a20c6f

Device Boot Start End Sectors Size Id Type
/dev/sdb1 2048 409599 407552 199M 83 Linux
```

Step 2

The screenshot shows a terminal window titled "Cyber School [Running] - Oracle VirtualBox". The user "demetrius@kali" is at the prompt. They have executed the command `sudo mkfs -t ext4 /dev/sdb1`. The output shows the mkfs process details: "mke2fs 1.47.2 (1-Jan-2025)", "Creating filesystem with 203776 1k blocks and 51000 inodes", "Filesystem UUID: 9324deab-a484-460c-949d-92f9b820ab97", "Superblock backups stored on blocks: 8193, 24577, 40961, 57345, 73729", and "Allocating group tables: done", "Writing inode tables: done", "Creating journal (4096 blocks): done", and "Writing superblocks and filesystem accounting information: done". The prompt is now `demetrius@kali`.

```
(demetrius@kali)-[~]  
$ sudo mkfs -t ext4 /dev/sdb1  
mke2fs 1.47.2 (1-Jan-2025)  
Creating filesystem with 203776 1k blocks and 51000 inodes  
Filesystem UUID: 9324deab-a484-460c-949d-92f9b820ab97  
Superblock backups stored on blocks:  
    8193, 24577, 40961, 57345, 73729  
  
Allocating group tables: done  
Writing inode tables: done  
Creating journal (4096 blocks): done  
Writing superblocks and filesystem accounting information: done  
  
(demetrius@kali)-[~]  
$
```

Step 3

a)

The screenshot shows the same terminal window. The user has executed the command `sudo ls /dev/sd*`. The output lists the following device paths: `/dev/sda`, `/dev/sda1`, `/dev/sda2`, `/dev/sda5`, `/dev/sdb`, and `/dev/sdb1`. The prompt is now `demetrius@kali`.

```
(demetrius@kali)-[~]  
$ sudo ls /dev/sd*  
/dev/sda  /dev/sda1  /dev/sda2  /dev/sda5  /dev/sdb  /dev/sdb1  
  
(demetrius@kali)-[~]  
$
```

b)

```
(demetrius@kali)-[~]
$ sudo fdisk -l
Disk /dev/sda: 25 GiB, 26843545600 bytes, 52428800 sectors
Disk model: VBOX HARDDISK
Units: sectors of 1 * 512 = 512 bytes
Sector size (logical/physical): 512 bytes / 512 bytes
I/O size (minimum/optimal): 512 bytes / 512 bytes
Disklabel type: dos
Disk identifier: 0xbbe7df08

Device      Boot    Start        End    Sectors    Size Id Type
/dev/sda1   *            2048    49641471    49639424    23.7G 83 Linux
/dev/sda2                49643518    52426751    2783234     1.3G  f W95 Ext'd (LBA)
/dev/sda5                49643520    52426751    2783232     1.3G 82 Linux swap / Solaris

Disk /dev/sdb: 200 MiB, 209715200 bytes, 409600 sectors
Disk model: VBOX HARDDISK
Units: sectors of 1 * 512 = 512 bytes
Sector size (logical/physical): 512 bytes / 512 bytes
I/O size (minimum/optimal): 512 bytes / 512 bytes
Disklabel type: dos
Disk identifier: 0xe3a20c6f

Device      Boot    Start        End    Sectors    Size Id Type
/dev/sdb1            2048    409599     407552    199M 83 Linux

(demetrius@kali)-[~]
$
```

c)

```
(demetrius@kali)-[~]
$ sudo parted -l
Model: ATA VBOX HARDDISK (scsi)
Disk /dev/sda: 26.8GB
Sector size (logical/physical): 512B/512B
Partition Table: msdos
Disk Flags:

Number  Start   End     Size    Type     File system  Flags
  1      1049kB  25.4GB  25.4GB  primary  ext4         boot
  2      25.4GB  26.8GB  1425MB  extended
  5      25.4GB  26.8GB  1425MB  logical  linux-swaps(v1) swap

Model: ATA VBOX HARDDISK (scsi)
Disk /dev/sdb: 210MB
Sector size (logical/physical): 512B/512B
Partition Table: msdos
Disk Flags:

Number  Start   End     Size    Type     File system  Flags
  1      1049kB  210MB   209MB   primary  ext4
```

Step 4 & 5


```
Cyber School [Running] - Oracle VirtualBox
File Machine View Input Devices Help
1 2 3 4 5
demetrius@kali: /cyse
File Actions Edit View Help
(demetrius@kali)-[~]
$ sudo mkdir /cyse
(demetrius@kali)-[~]
$ cd /cyse
(demetrius@kali)-[/cyse]
$ sudo mount /dev/sdb1 /cyse
(demetrius@kali)-[/cyse]
$ df -h
Filesystem      Size  Used Avail Use% Mounted on
udev            921M   0    921M   0% /dev
tmpfs           198M 1000K  197M   1% /run
/dev/sda1       24G   15G   7.0G  69% /
tmpfs           987M   4.0K  987M   1% /dev/shm
tmpfs           5.0M   0    5.0M   0% /run/lock
tmpfs           987M   16K   987M   1% /tmp
tmpfs           1.0M   0    1.0M   0% /run/credentials/getty@tty1.service
tmpfs           198M  116K  198M   1% /run/user/1000
tmpfs           1.0M   0    1.0M   0% /run/credentials/systemd-journald.service
/dev/sdb1       181M   63K  167M   1% /cyse
(demetrius@kali)-[/cyse]
$
```

Step 6

```
(demetrius@kali)-[/cyse]
$ cd /cyse
(demetrius@kali)-[/cyse]
$ sudo touch devan032.txt
(demetrius@kali)-[/cyse]
```

```
demetrius@kali: /cyse
File Actions Edit View Help
Demetrius Evans
~
~
(demetrius@kali)-[/cyse]
$ sudo vi /cyse/devan032
(demetrius@kali)-[/cyse]
$
```

Step 7

```
demetrius@kali: ~
File Actions Edit View Help
(demetrius@kali)-[/cyse]
$ cd
(demetrius@kali)-[~]
$ sudo umount /cyse
(demetrius@kali)-[~]
$
```

Step 8: My file, devan032 is not showing up, the directory returns as empty. When I try to open the file with the cat command nothing happens.

```
(demetrius@kali)~  
$ sudo ls -l /cyse  
total 0  
  
(demetrius@kali)~  
$ cat /cyse/devan032  
cat: /cyse/devan032: No such file or directory
```