



Cover Page

Title:

GEORGIA O'KEEFFE

Written by: Gavin Williams
Due by: 11/16/2021 9:30am



GEORGIA O'KEEFFE

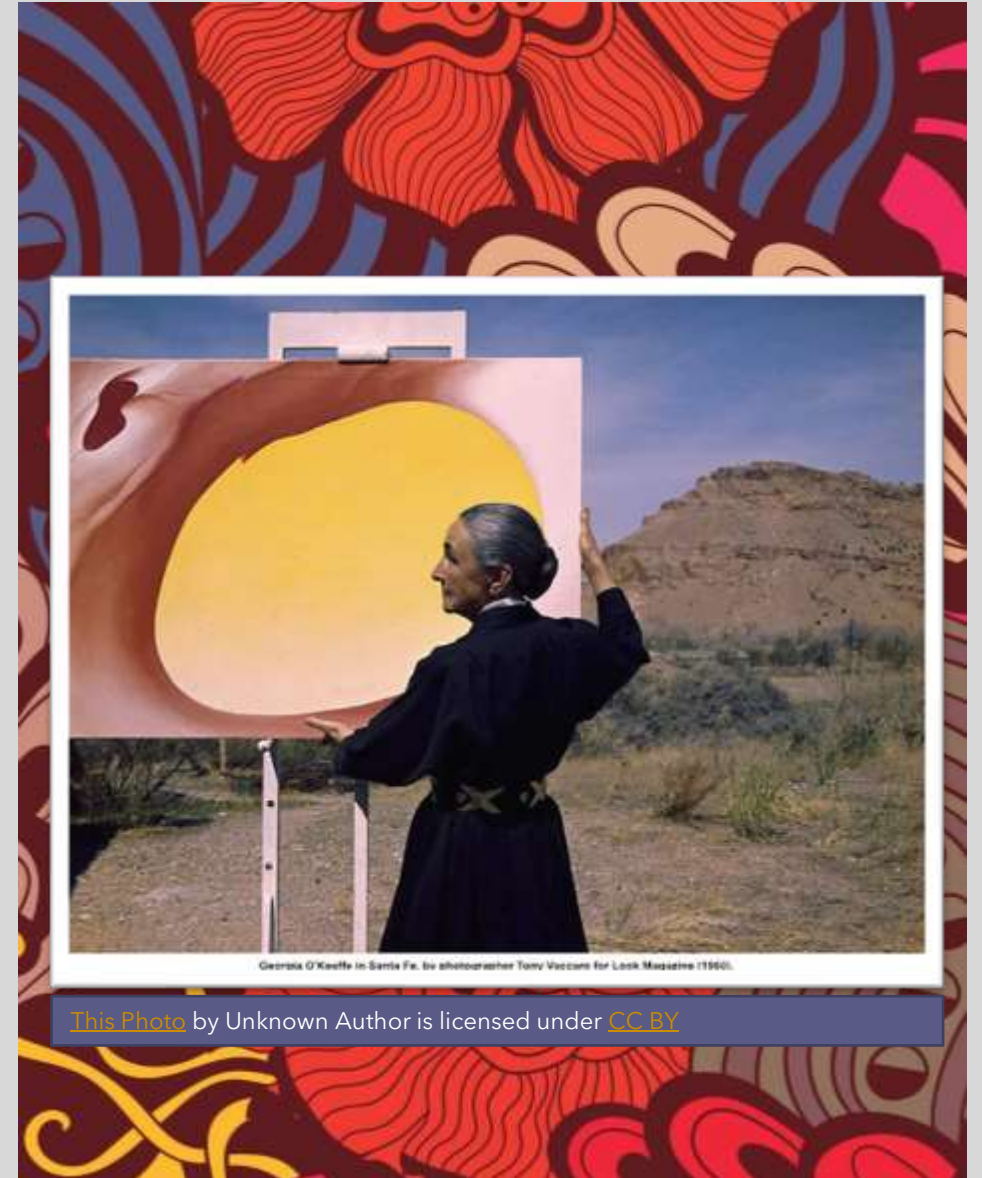
Written by: Gavin Williams

INTRODUCTION

“I decided that if I could paint that flower in a huge scale, you could not ignore its beauty.” – Georgia O’Keeffe

What is to be covered in this presentation:

- Biography of Georgia O’Keeffe
- 3 works of art with descriptions and meaning
- Conclusion / Final thoughts
- Bibliography



Georgia O'Keeffe in Santa Fe, by photographer Tony Vaccaro for Look Magazine (1960).

[This Photo](#) by Unknown Author is licensed under [CC BY](#)

BIOGRAPHY

Georgia O'Keeffe was born November 15, 1887, on a farm located near Sun Prairie, Wisconsin. She was the second child of seven and was always determined to be an artist. After she graduated from high school in 1905, O'Keeffe went on to study at the Art Institute of Chicago as well as the Art Students League in New York. She studied the techniques of traditional paintings while in school, but later studied the revolutionary ideas of Arthur Wesley Dow. Dow inspired O'Keeffe to create a series of abstract charcoal drawings, which were then exhibited by Alfred Stieglitz, who later became her husband.



This Photo by Unknown Author is licensed under [CC BY](#)



This Photo by Unknown Author is licensed under [CC BY-NC-ND](#)

BIOGRAPHY CONTINUED

By the mid 1920s, O'Keeffe had made a significant impact as an artist and became recognized as one of America's greatest artist. By this time, she was known for her painting of New York skyscrapers, a symbol for modern America, and her depictions of flowers. In 1929, O'Keeffe made her first of many trips to northern New Mexico. The rich culture and beautiful landscapes of New Mexico inspired a change in her art. In 1949 O'Keeffe decided to live and work in New Mexico and traveling the world, creating works of art inspired from the locations she visited. O'Keeffe continued to paint even when her eyesight diminished with the help of her assistants. on March 6, 1986, she died at the age of 98.

RITZ TOWER

In 1928 Georgia O'Keeffe created an oil painting titled Ritz Tower. This painting was one of many that shows views of the New York city skyline. The painting is of Ritz tower, one of the latest and tallest buildings constructed at the time. The building represented a period of growth and prosperity in the United States. O'Keeffe had said about her city scenes as such, "One can't paint New York as it is, but rather as it is felt." The building represented takes on a very dark and moody atmosphere in contrast to the harsh halo around the streetlamp and the vibrant blue of the night sky. The painting itself is Oil on canvas, abstract, and uses elements of one point perspective.



Georgia O'Keeffe. *Ritz Tower*, 1928. Oil on canvas, 40 1/4 x 14 inches. Georgia O'Keeffe Museum (Santa Fe), <https://prints.okeeffemuseum.org/detail/502422/okeeffe-ritz-tower-1928> (November 13, 2021).

HIBISCUS WITH PLUMERIA

Georgia O'Keeffe is known to have created many paintings involving flowers. Knowing this Dole Pineapple Company had offered to give O'Keeffe an all expenses paid trip to the state of Hawaii. The goal was to have her paint the local tropical flora and uses the painting for their 1939's advertisement campaign. In the painting you can see the vibrant colors of the flower against the bright blue sky. According to experts, O'Keeffe decided to paint this in a way that would emphasize that there is beauty in life every where you go. Hibiscus with Plumeria was just one of twenty works of art she created on that trip, but funny enough none featured pineapples as the subject, despite Dole being named Dole *Pineapple* Company. This work uses many vibrant colors to bring a joyful mood to the piece. It is painted using oil paints and is a representational piece.



Georgia O'Keeffe, *Hibiscus with Plumeria*, 1939, oil on canvas, Smithsonian American Art Museum, <https://americanart.si.edu/artwork/hibiscus-plumeria-73942> (November 13, 2021).

RAMS HEAD, BLUE MORNING GLORY

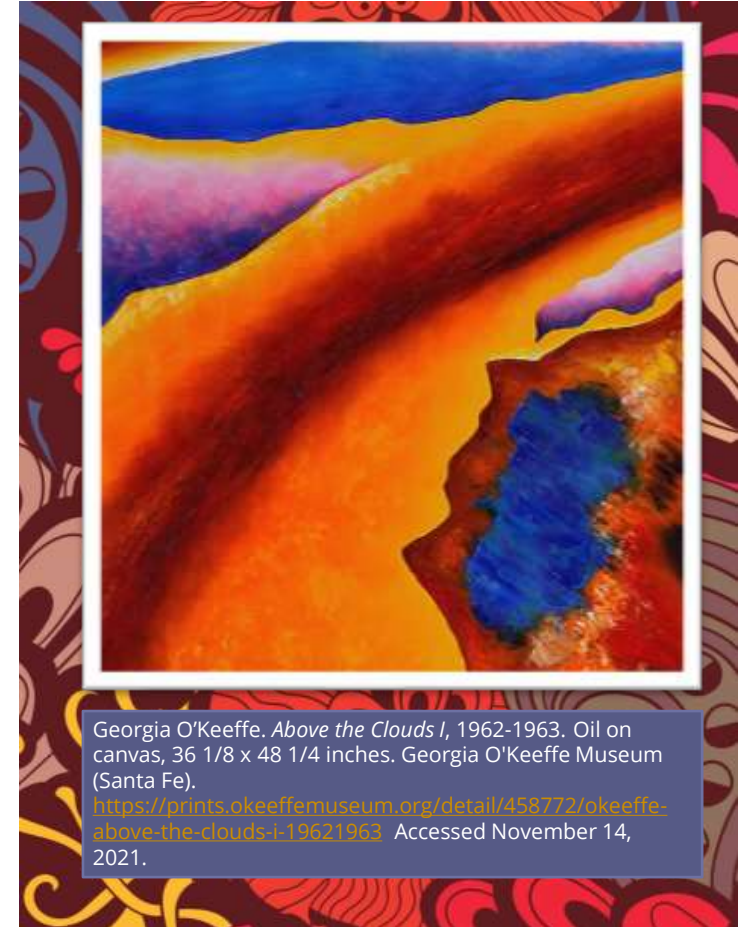
This painting shows a morning glory flower in full bloom next to the skull of a ram. This piece merges two important aspects of life. The flower represents the creation of life, and the ram skull represents death. Moreover, the flower blooms because it takes nourishment from the skull. This painting shows the transition in Georgia O'Keeffe's own life. The ram's head may mark the closing death on her life as an artist, as she moved to New Mexico late in her life. Whereas the morning glory represents the beauty in one's passing and how the memory of her and her art will live on. This is a representation piece that contains color shading in the ram skull, giving it a 3D look while the flower remains flat, or 2D.

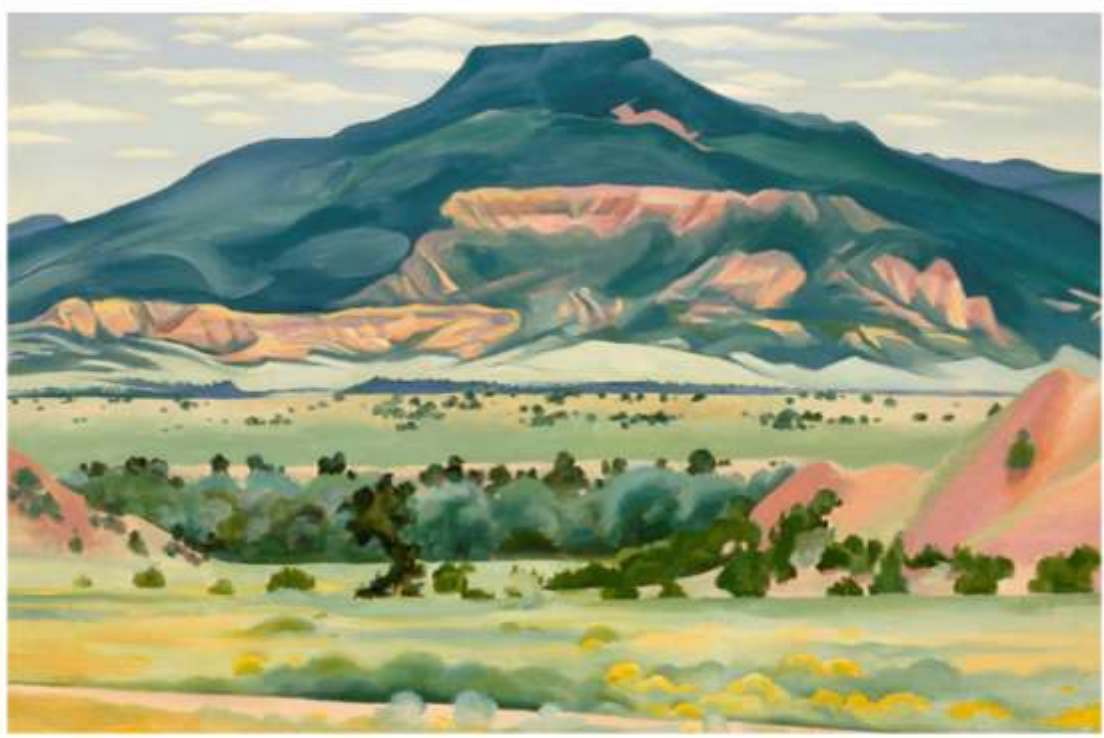


Georgia O'Keeffe. *Ram's Head, Blue Morning Glory*, 1938. Oil on canvas, 20 x 30 inches. Georgia O'Keeffe Museum, Gift of The Burnett Foundation.
<https://prints.okeeffemuseum.org/detail/458786/okeeffe-rams-head-blue-morning-glory-1938> (November 13, 2021).

CONCLUSION

Georgia O'Keeffe has been a well-known artist in the United States for many decades, and even after her passing her work continues to gain popularity around the world. Georgia O'Keeffe has created nearly 150 paintings and hundreds of other works of art in her life. Most known for her beautiful depictions of flowers and nature, as well as her early works of art feature the newly constructed city skylines.





Georgia O'Keeffe. *My Front Yard, Summer*, 1941. Oil on canvas, 20 1/16 x 30 1/8 inches. Georgia O'Keeffe Museum.
<https://www.okeeffemuseum.org/support/pedernal-society/> (November 14, 2021).

BIBLIOGRAPHY

- "About Georgia O'keeffe - the Georgia O'Keeffe Museum." *Georgia O'Keeffe Museum*, 12 June 2020, <https://www.okeeffemuseum.org/about-georgia-okeeffe/>. Accessed November 12, 2021
- "Ritz Tower." *Georgia O'Keeffe Museum*, 13 Feb. 2020, <https://www.okeeffemuseum.org/installation/ritz-tower/>. Accessed November 13, 2021
- "Hibiscus with Plumeria." *Hibiscus with Plumeria* by Georgia O'Keeffe, <https://www.georgiaokeeffe.org/hibiscus-with-plumeria/>. Accessed November 13, 2021
- "Ram's Head Blue Morning Glory." *Ram's Head Blue Morning Glory* by Georgia O'Keeffe, <https://www.georgiaokeeffe.org/rams-head-blue-morning-glory/>. Accessed November 13, 2021