

CYSE 301: Cybersecurity Technique and Operations

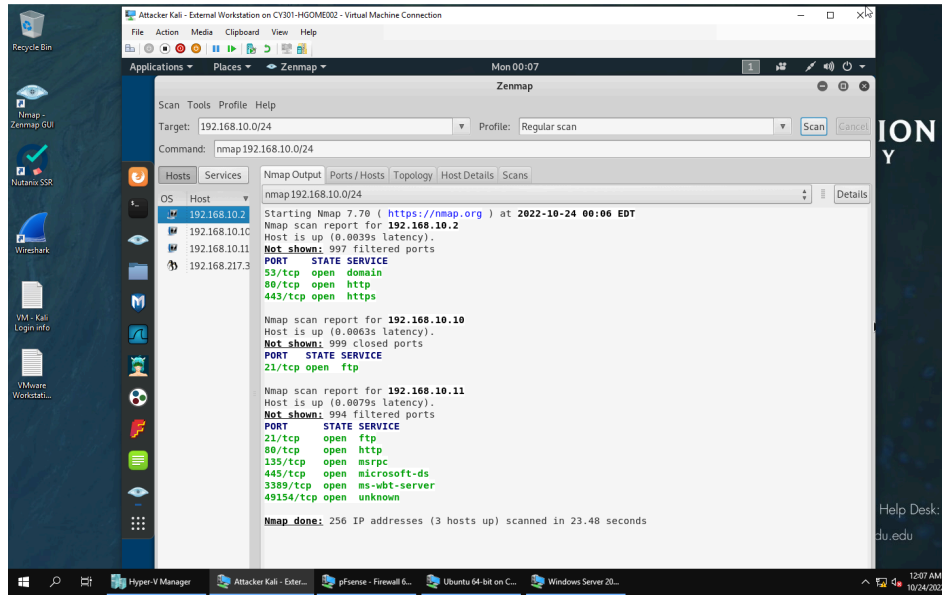
Assignment 3: Sword vs. Shield

Old Dominion University

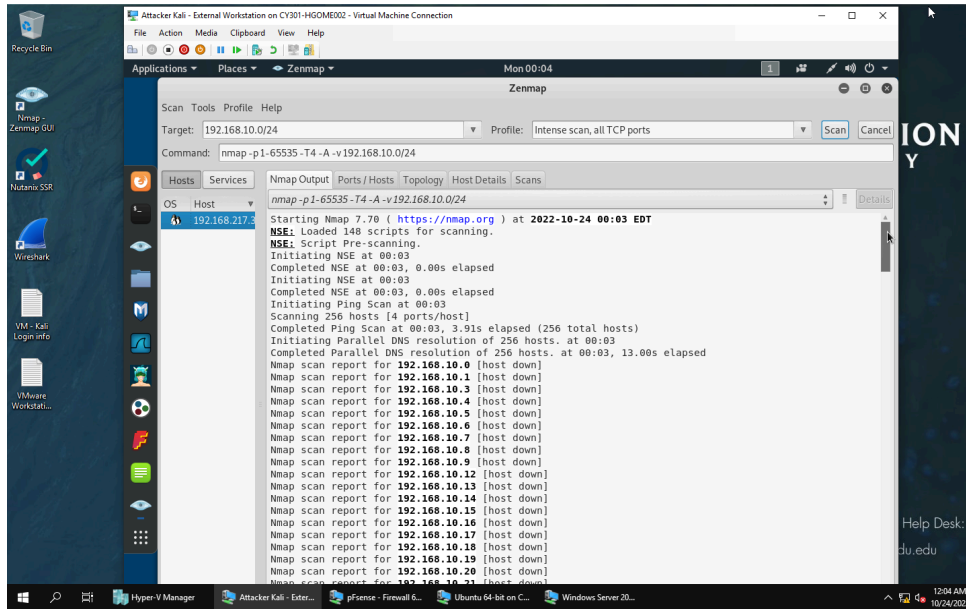
Hector Gomez

1.

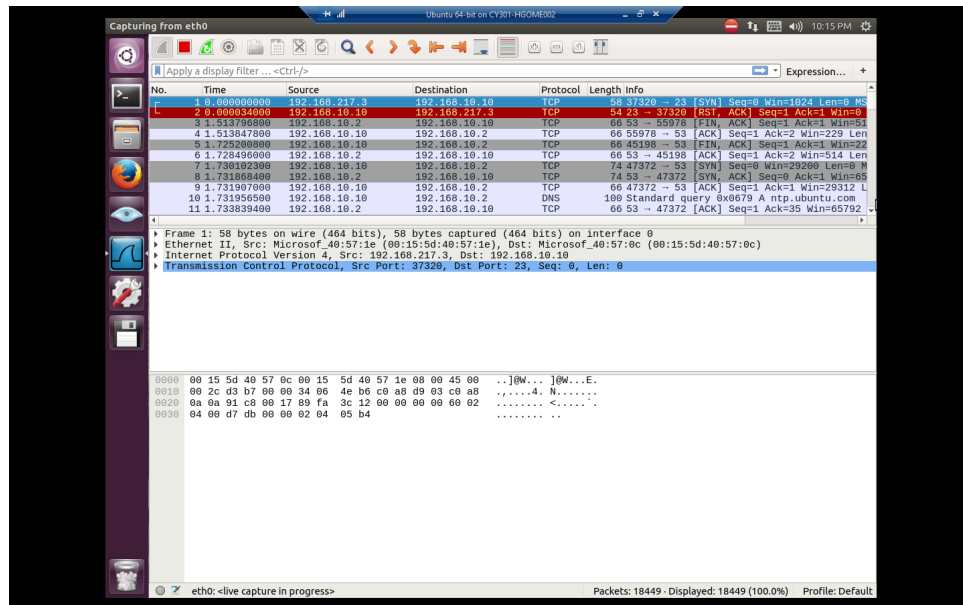
1.



2.



3.



I ran the subnet topology on Kali and ran an intense scan of all TCP ports and then i opened up wireshark on Ubuntu VM and clicked on Eth0 and i see how ip addresses are changing and some are consistent and the protocols are mainly TCP.