



By

Trevor Bembry

Jasmine Banks

Denise Gordan

Bembry National Museum of African Art

Start Here

- Thank you for choosing the National Museum of African Art where you will find an incredible display of African Art.
- The theme of this museum shows African art dating back from numerous time periods.
- Each work of art we chose to use in my museum can be found in chapter 14 in the textbook.
- Please no flash photography and no touching display unless told you may do so.



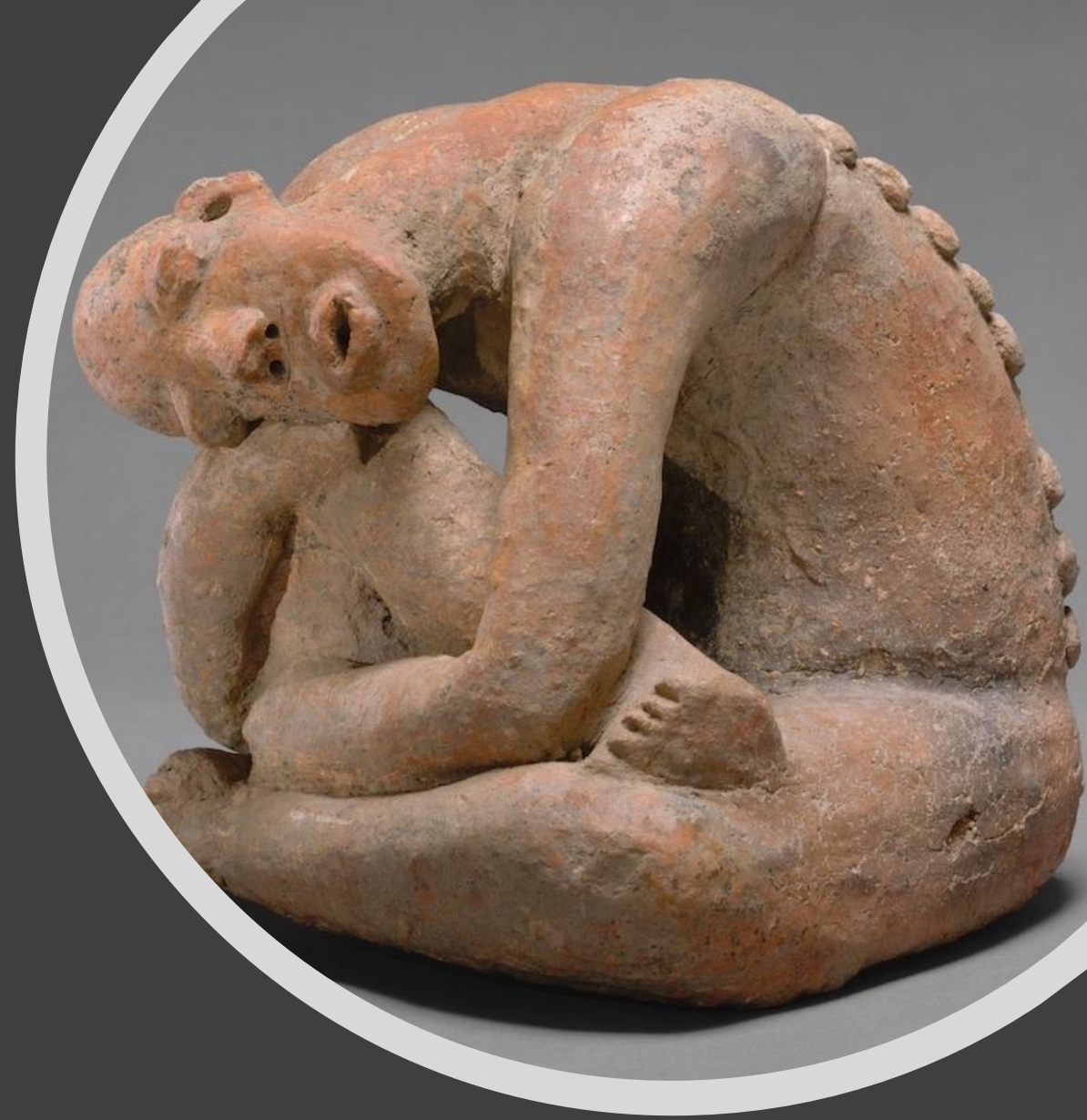
Head from Nok (500 B.C.-200 A.D.)

- Most Nok sculptures are empty inside and use a spiral like technique similar to pottery.
- The head is almost life sized and was part of a full body. Unique hairstyle include buns with holes.
- Different eyes and holes are used for the pupils, noses, mouths, and ears combine to depict men and women with bold, thought out features.
- The heads of Nok terracotta's are mostly always larger than the bodies.
- The Metropolitan Museum of Art



Seated Figure (250 B.C. - 900 A.D.)

- The figure is sitting hunched over with both arms tightly around the other and upraised leg, its head tilted sideways to rest against its bent knee.
- This terracotta sculpture comes from Djenné-Jeno, the oldest known city in sub-Saharan Africa.
- The raised marks on the back of this bent over Djenné figure may show disease or someone dying. The facial expression and position could show a person in pain.
- The Metropolitan Museum of Art



Queen Mother Pendant Mask: Iyoba

- This ivory pendant mask has another mask almost the exact same only it is in the British Museum in London
- The pendant mask was made around the early sixteenth century for the King or Oba Esigie, the king of Benin, to honor his mother, Idia.
- Their lips are parted, nostrils somewhat flared, and hair heavy with tiny coils and a squared off hairline.
- The Met Fifth Avenue

Bronze Head from Ife 1300 C.E.

- The Ife head is a portrait that maybe built after a ruler named Ooni or Oni.
- The head is approximately three-quarters life-size, measuring 35 cm high.
- Ife is considered by its people as the place where their god created humans.
- The bronze casts could have been inspired by the terracotta sculptures.
- The British Museum



Plaque: Warrior and Attendants (16th–17th century)

- The largest figure is called the warrior chief and has the highest rank out of the rest of the figures. He is positioned in the center, on either side soldiers of lower rank are shown.
- The warrior chief wears a coral decorated helmet and collar, a fighting wrap, and metal ornaments on his hip.
- In his left hand he has a sword, that shows loyalty and has a spear in his right hand
- One attendant is using a fan to cool the warrior chief, the other has a trumpet to announce the warriors chiefs presence.
- 45.6 x 35 x 8.9 cm (17 15/16 x 13 3/4 x 3 1/2 in.)
National Museum of African Art



Works Cited

The Met's Heilbrunn Timeline of Art History,
www.metmuseum.org/art/collection/search/314362.

“Gallery Preira.” Gallery Preira,
gallerypreira.wordpress.com/

HENITalks. “Gus Casely-Hayford - 'A Physical Essay in Power': The Striking Story of a Benin Ivory Mask.

Stokstad, Marilyn, and Michael Watt Cothren. Art: a Brief History. Pearson, 2016.