

[Lab report](#): 05/28/2025 01:21 AM UTC

Hands-On Microsoft Windows Server 2019

Managing Virtual Machine Networks

Start:

05/28/2025 01:21 AM UTC

Finish:

05/28/2025 02:07 AM UTC

Elapsed (min):

46.0

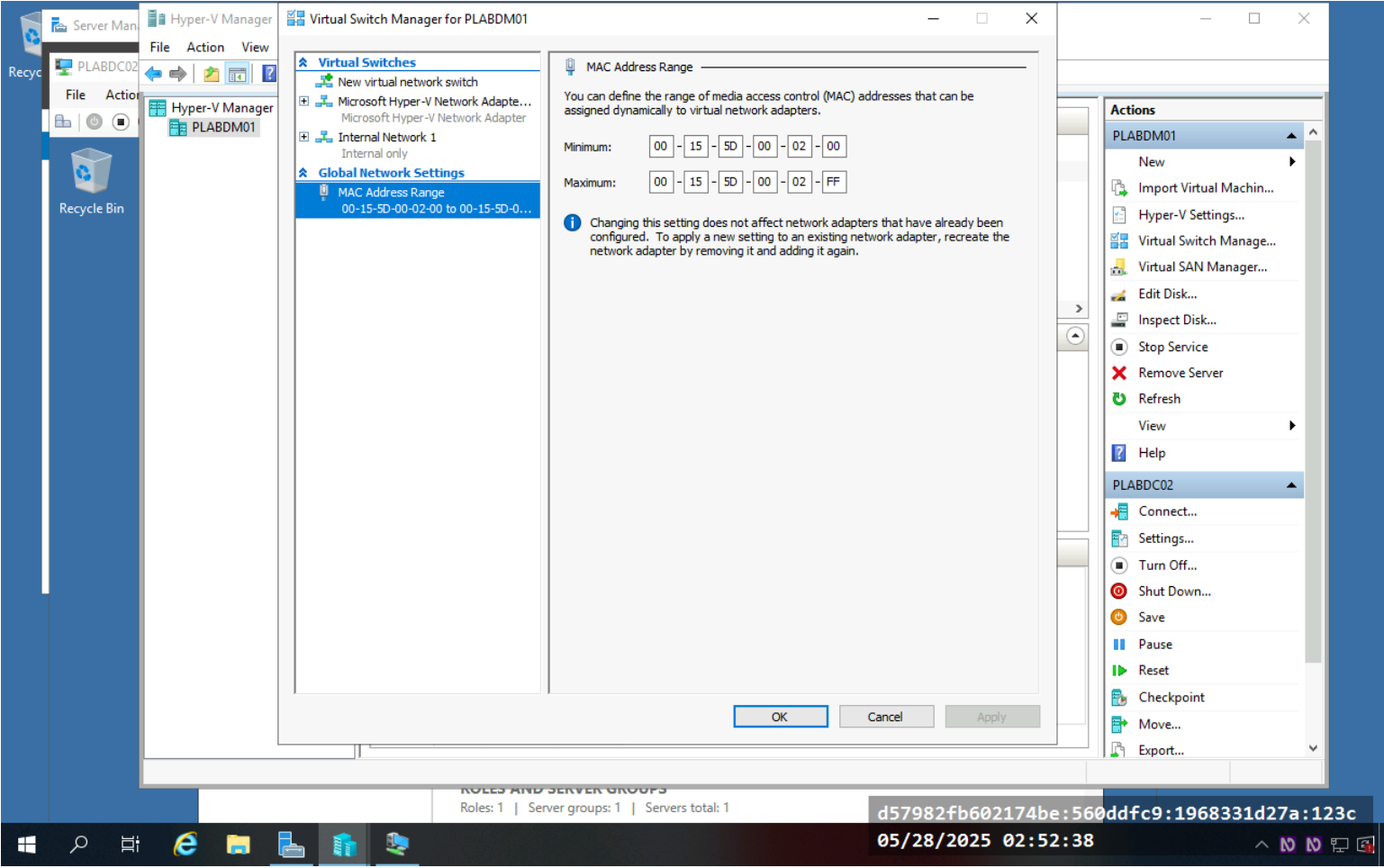
Status:

Submitted

1. Screenshot

Actioned

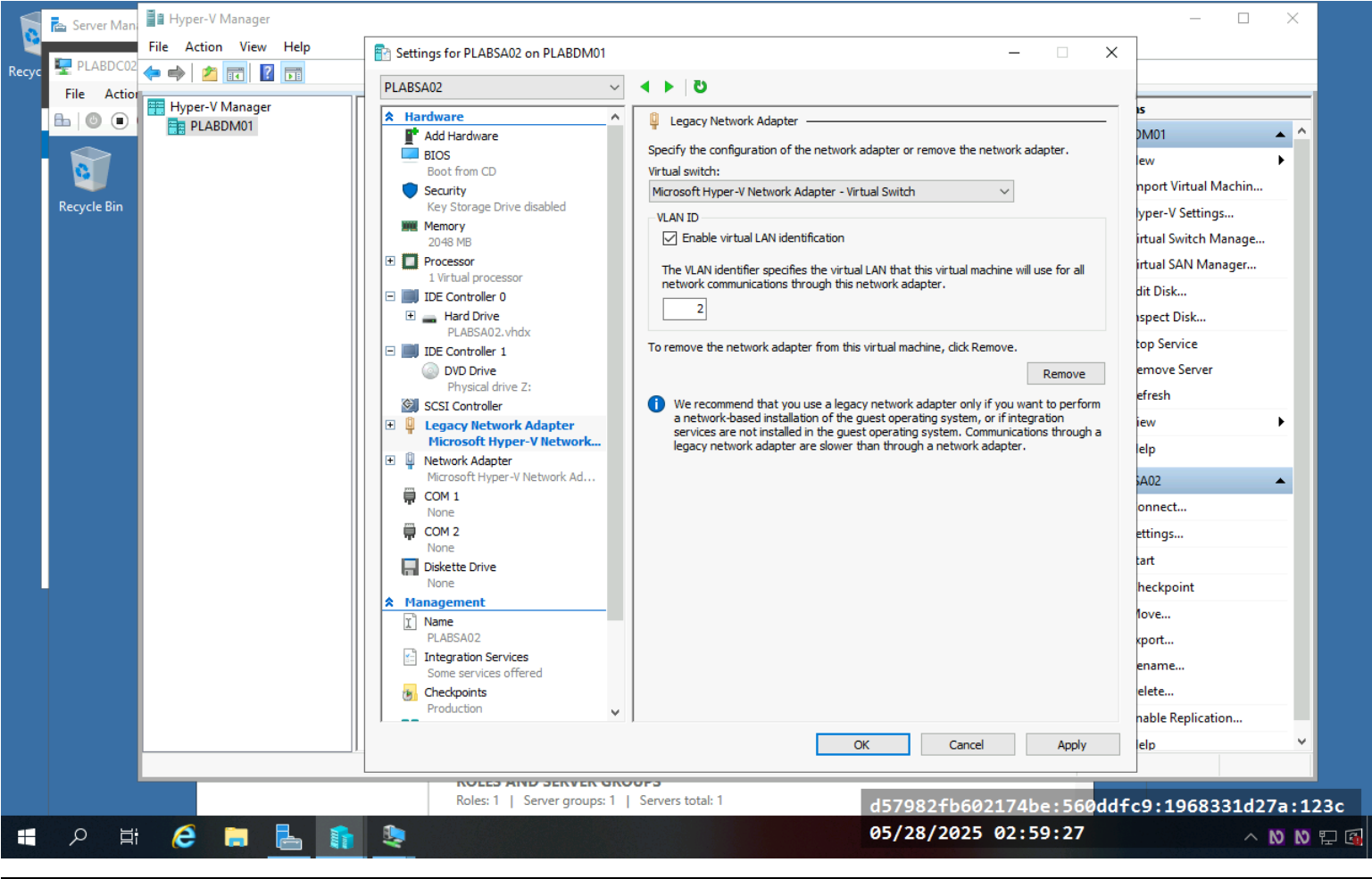
Item completed: 05/28/2025 01:52 AM
Value: 0



2. Screenshot

Actioned

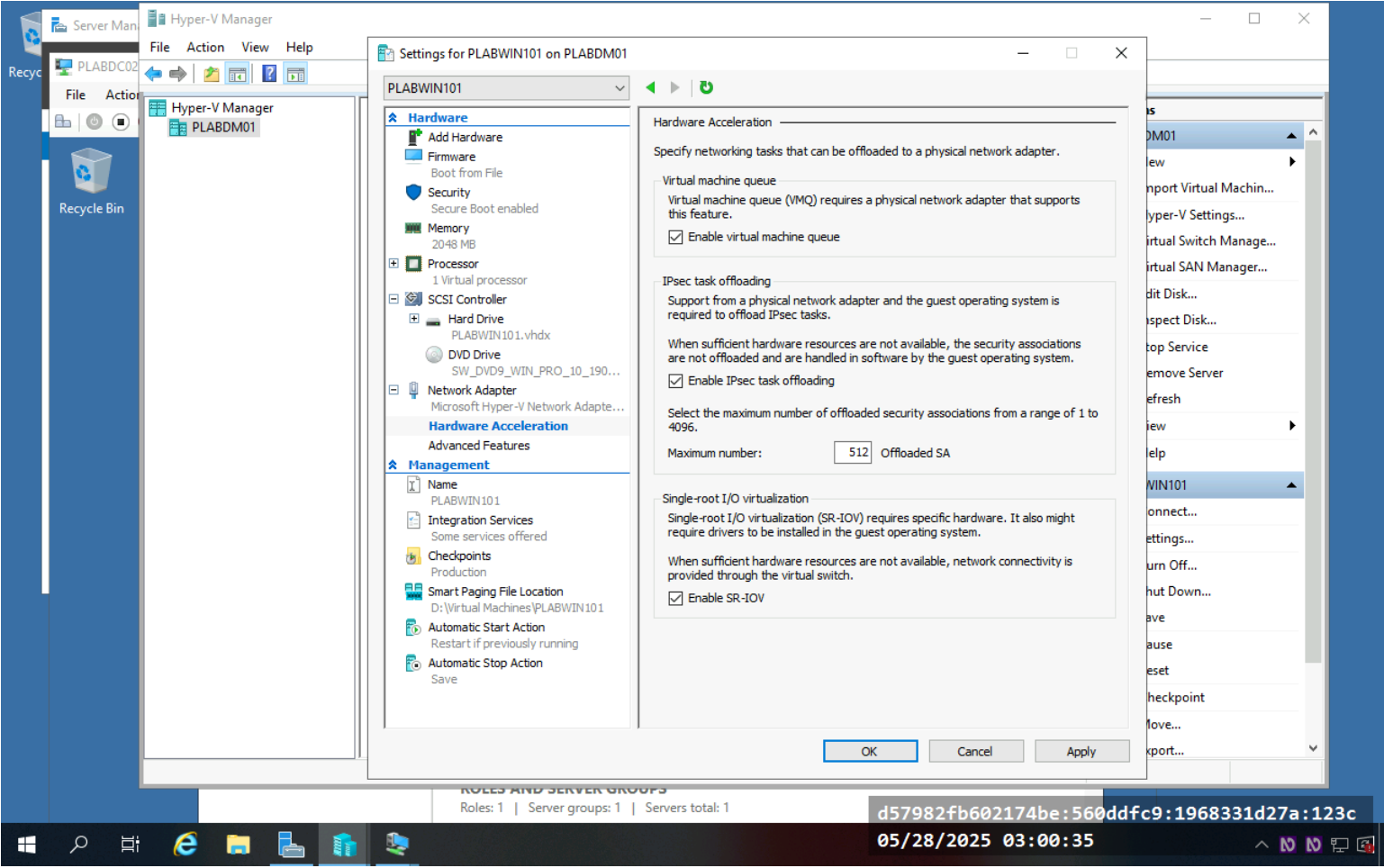
Item completed: 05/28/2025 01:59 AM
Value: 0



3. Screenshot

Actioned

Item completed: 05/28/2025 02:00 AM
Value: 0



4. Question

Actioned

Item completed: **05/28/2025 02:06 AM**

Value: **1**

Answer: **Internal Virtual Network**

PASS

5. Question

Actioned

Item completed: **05/28/2025 02:06 AM**

Value: **1**

Answer: **Test the connectivity of the guest virtual machine to the Hyper-V host**

PASS

6. Question

Actioned

Item completed: **05/28/2025 02:06 AM**

Value: **1**

Answer:

Enables you to work with multiple network segments

Isolates virtual machines and physical computers from one another

Allows you to work with an array of services on virtual machines without the risk of disrupting the services on another part of the network

To create network isolation, you need to deny the flow of data between two servers

PASS

7. Question

Actioned

Item completed: **05/28/2025 02:06 AM**

Value: **1**

Answer: **The inbound and outbound traffic between 192.168.0.2 and PLABWIN101 will be denied**

PASS

8. Question

Actioned

Item completed: **05/28/2025 02:06 AM**

Value: **1**

Answer: **Displays the summary of network adapters and the associated rules**

PASS

Score : 5 out of 5 (100%)