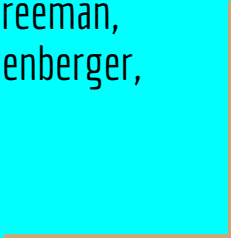


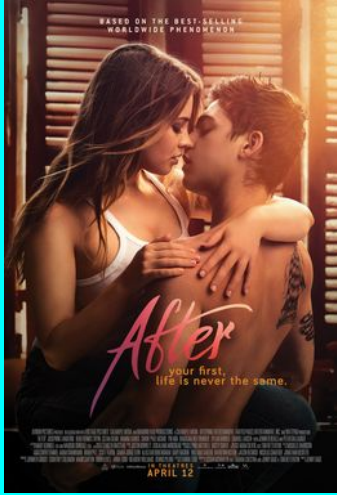


Connections to Toxic Love and Family Love

By Gabrielle Johnson, Niyah Freeman,
Jessica Frimpong, Victorya Hagenberger,



After Movie Series



After



Summary: In the beginning of the film, Tessa is a college freshman who is leaving her high school sweetheart. Tessa is pretty uptight at first until she meets Hardin and other friends. At her first party she falls into peer pressure and kisses Hardin. As the movie continues, Hardin and Tessa can't resist their sexual attraction to each other. As they grow closer, Hardin's toxic relationship with his father and alcohol problem begin to come to the surface. Tessa and Hardin's relationship consists of a toxic pattern of sexual attachment, fighting, then making up as this cycle continues throughout the film. They do petty things throughout the movie to make each other jealous even though they confess to being in love with each other. Tessa finds out Hardin has lied to her about his intentions with her which causes them to break up.

Connection to toxicity and family love in pop culture.

This movie connects to toxic and family love through the toxic love cycle of Tessa and Hardin. Hardin has an alcohol problem and has a rough relationship with his father. Tessa has always come to Hardin's rescue when it comes to his toxic situation which in the end causes her pain and toxicity to her life. Hardin also has a drinking problem that causes him to do things he regrets. This also creates a toxic on and off cycle in their relationship. In pop culture, toxic on and off relationships and "situationships" have been normalized in society. Many people in this generation only have sexual relations and desires without any commitment or desire for real love. Although in the movie I believe they truly loved each other it was not a healthy love but a toxic love. Hardin's relationship with his father was toxic which also demonstrates how family love can affect the way we love others.



After We Collided



Summary: In the beginning, Tessa is starting out her paid internship at a publishing company & Hardin is having nightmares. Both characters are still not over each other. One of Tessa's coworkers, Trevor, becomes a second possible love interest as we progress through the film. When Hardin goes to visit Landon, he tells him that he lied about cheating on Tessa & that he only told her that lie as revenge, which Landon informs Tessa of. Hardin's mother comes to visit from London for the holidays & she celebrates Tessa's birthday with Tessa & Hardin. When Tessa goes back to visit her mother her high school sweetheart comes to greet her, which is when she finds out her father wanted to come see her & her mother scared him off. Tessa then returns home to Hardin where they slowly work things out. Hardin's father comes back into the picture & invites Tessa, Hardin, & Hardin's mother to his Christmas party where Hardin reveals he's moving back to England after graduation. Tessa is offered a position in Seattle by her boss. Tessa & Hardin go to a New Year's Party where they get into a fight after Tessa overhears a conversation & kisses a guy in front of Hardin as revenge thinking he cheated on her. Tessa gets into a car accident when she's out looking for Hardin & when he calls her Trevor answers telling him to stay away. Hardin shows up to a party at Vance's house where she & Trevor start talking when he excuses himself & Tessa spots Hardin on the loft above her. The two leave the party together & make up before the movie ends after Tessa's father appears.

Connection To Toxic Love & Familial Love: The two main characters of this series are a terrible match because they are both terrible people. Both of these individuals struggle with anger issues, with Hardin making rash decisions based on emotion & Tessa making rash decisions based on assumptions. Both Hardin & Tessa struggle with parental issues due to Hardin's father abandoning him & his mother after a traumatic event & Tessa having an overbearing & controlling mother. Their relationship is severely unhealthy, however the two are too codependent on one another to let the other person go.

After We Fell



Summary: In *After We Fell*, Tessa's dad reappears into her life and is staying with Hardin and her. Tessa is preparing to leave for Seattle for her new publishing job. But Hardin is not aware of this new news. Hardin wanted to move to London with Tessa after graduation but never got the chance to tell her.

Communication is off between the two. Hardin receives a phone call about attending his mom's wedding but forgets to tell Tessa. Again communication is off between the two. The two get into multiple arguments about Tessa's move to Seattle for her new job and Tessa leaves without saying goodbye. Hardin starts to use boxing as a way to release anger. He ends up coming to Seattle to see Tessa after having a nightmare about her and her coworker, Trevor. He apologizes for causing her any pain after reading her personal journal. Hardin would be moving to Seattle in 2 months. Tessa and Hardin both attend his mother's wedding in London. The night before the wedding Hardin catches his mother and Vance having an affair in the kitchen. Which caused him to punch Vance. The next day, they went on with the wedding and Trish is now married to Mike. Kimberly, Vance's wife, already knew about the affair and was telling Tessa, that she can't leave because she loves him. Vance and Hardin have a sit down talk at a bar about what happened the night before. Both Vance and Kimberly reveal that Vance is the real father of Hardin to both Hardin and Tessa. When Tessa found out, she ran to where Hardin would be and found him. They embraced each other in the middle of the street.

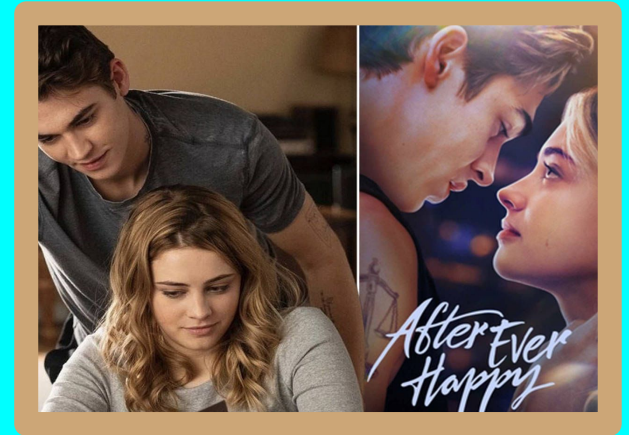
Connection to Toxic Relationships in the Generation...

They have poor communication as well as comprehension skills. In this movie, there were so many "secrets" that shouldn't have been secrets. They don't know how express themselves without it being an argument. In this generation, it is so common to be in an argument for just expressing how you feel in a situation. That's why many of the younger generation's relationships lack communication and comprehension. Trust, which is a big thing in a relationship, is not really common culture in relationships now and days. In the movie, both Hardin and Tessa can't really trust each other to be around the opposite sex so they tend to retaliate and hurt each other because of the lack of trust and strong jealousy. In our generation, lack of communication is one of the common problems in relationships today. Instead of saying how you feel, you would want to go hurt the person you love to show them how much they hurt you. Which is not good.

After Ever Happy

Movie Summary:

- In the beginning of the movie, Hardin becomes more toxic when he gets drunk because he is finding out the truth about his childhood.
- Tessa wants to save Hardin from his toxic ways but she was faced with infidelity. After that, she gives Hardin an ultimatum which causes them to break up.
- Tessa goes through a traumatic death from her dad which makes Hardin want to talk to her again.
- After, Tessa finds out she can't have children.
- Tessa moves to New York, after 5 months, Hardin comes to New York hoping the two will rekindle their relationship.
- Tessa "moves on" after she finds out Hardin is publishing a book about their toxic relationship.



Connection to Toxic Relationships in this generation:

In the movie and like the ones before, Hardin's drinking problem leads to a more toxic relationship with Tessa. In this generation, toxic relationships are normalized due to substance abuse and the desire to "fix" each other. For instance in this movie, Tessa tries to resolve issues with Hardin to stay with him. Toxic childhoods also have a major effect on how someone treats and handles romantic relationships. Also, tragic events can make or break a toxic relationship. Additionally, in this generation, some relationships become toxic due to inability to conceive children. Lastly, jealousy can lead to toxic relationships when a partner jealousy stems from the other's accomplishments.

Common Aspects of the Romance Genre

As Linnell Secomb describes, the romance genre has a common formula: “boy meets girl; the initial attraction thwarted at first they hate, fight and bicker; but the obstacle finally removed allows a final embrace signifying undying devotion” (Secomb, 113).

Media in the romance genre, often through the use of this formula, tends to convey the myths “of love conquering all, of happy endings and everlasting love, and ... that we each have only one true love” (Secomb, 113).

In the *After* series, the first movie almost follows the typical formula of the romance genre. Tessa and Hardin meet at college, they hate each other because of their differences, and Tessa’s boyfriend breaks up with her, letting her date Hardin instead. Instead of a happy ending, however, Tessa and Hardin also break up, as it’s revealed that Hardin only started dating her because of a bet and said he would dump her. In the second movie, however, Tessa and Hardin end up getting back together, and this cycle repeats throughout the series.

After and the Romance Genre

Despite problems in their relationship that cause them to break up, Tessa and Hardin always get back together, implying that the love keeping them together is stronger than the problems tearing them apart and that their love conquers the problems in their relationship. The fact that they always get back together, even if they are shown to have chemistry with other characters in the series, also implies that they are each other's one true love. Despite subverting the common romance formula, the series still portrays the myths associated with the romance genre.

The relationship between Tessa and Hardin is harmful for both of them. Their relationship is often hurt by misunderstandings that escalate because they don't communicate with each other. They also don't trust each other enough to have a stable relationship, and they accuse each other of cheating. The series even acknowledges the fact that their relationship is harmful and toxic. Despite this, the series' adherence to tropes of the romance genre normalizes the toxic nature of their relationship. It implies that being in a toxic relationship is okay as long as you love each other and that things will work out eventually in a toxic relationship.