

Budget

Part 1**Total cost of cabling = \$1,604.07**

- Southwire 1000ft cat5e cable = \$178.23
- $\$178.23 \times 19 = \$3,386.37$
- **Total cabling for building is 18,642ft** (5,682 meters = 18,641.73 ft)
- **Total cable per floor**
 - 1,617 meters (3rd Floor)
 - 1,696 meters (2nd Floor)
 - 1,557 meters (1st Floor)
 - 812 meters (basement)
- **Home depot – Southwire 1000ft Cabling**
 - <https://www.homedepot.com/p/Southwire-1000-ft-Blue-24-4-CAT5e-CMP-Plenum-Data-Cable-56917749/202316503>
 -

Total cost of outlets = \$267.84

- Tripp Lite 2 port faceplate = \$1.99
 - $\$1.99 \times 54 = \107.46
- Commercial Electric = \$2.97
 - $\$2.97 \times 54 = \160.38
- **Total outlet and faceplate per floor**
 - 16 outlets & 8 faceplates (basement)
 - 28 outlets & 14 faceplates (1st floor)
 - 32 outlets & 16 faceplates (2nd floor)
 - 32 outlets & 16 faceplates (3rd floor)
- Tripp Lite: https://www.insight.com/en_US/buy/product/N042-001-WH/TRIPP%20LITE/N042-001-WH/Tripp-Lite-Dual-Outlet-RJ45-Universal-Keystone-Face-Plate--Wall-Plate--faceplate/
- Commercial Electric - <https://www.homedepot.com/p/Commercial-Electric-Category-5e-Jack-White-5025-WH/206427940>
-

Total cost of patch panels – \$227.83

- Tripp Lite 24 port patch panel (basement)– \$38.92
 - $\$38.92 \times 1 = \38.92
- Tripp Lite 48 port patch panel- \$62.97
 - $\$62.97 \times 3 = \188.91
- <https://www.newegg.com/Product/Product.aspx?item=N82E16812998069>
- <https://www.newegg.com/Product/Product.aspx?item=N82E16812998084>

Part 2

Equipment room (1st floor)

- Core switch (managed)
- 48 port switches

Telecomm room (Basement)

- 24 port switches

Telecomm room (2nd floor)

- 48 port switches

Telecomm room (3rd floor)

- 48 port switches

Total cost of switches = \$1,175.95

Core switch – NETGEAR 12 port managed switch – \$1,132.44

- $\$1,132.44 \times 1 = \$1,132.44$
- https://express.google.com/u/0/product/8087445967581739019_56551096522601424_48_46586?utm_source=google_shopping&utm_medium=tu_prop&utm_content=eid-lsjeuxoeqt>im=ClbXt-rpicjfkEQ6MGTx_zZp8peGMDT_psElgNVU0Qo4NzC5gUw-usC&utm_campaign=46586&gclid=EAlaIQobChMIuuKj05Xs4QIV0IKzCh0W6gkmEakYASABEgJNsPD_BwE

NETGEAR 24-Port managed switch – \$259.99

- $\$259.99 \times 1 = \259.99
- https://www.newegg.com/Product/Product.aspx?Item=N82E16833222025&Description=netgear%20managed%20switch&cm_re=netgear_managed_switch--33-222-025-

Product NETGEAR 48-port managed switch – \$388.43

- $\$388.43 \times 3 = \$1,165.29$
- https://www.newegg.com/Product/Product.aspx?Item=N82E16833122948&Description=48%20port%20gigabit%20switch&cm_re=48_port_gigabit_switch--33-122-948--Product

Total cost of cabling – \$146.36

CAT5e Ethernet Patch cable 10ft (25 pack) - \$17.28

- Total price of cabling = $\$17.28 \times 5 = \86.40
- 108 patch cables needed
- <https://www.cablesys.com/ethernet/cat5e-ethernet-patch-cord-with-24-awg-utp-cable-with-slagless-boot-25-bulk-pack/>

Belkin CAT5e Crossover Patch Cable – \$14.99 each

- $\$14.99 \times 4 = \59.96
- <https://www.belkin.com/us/p/P-A3X126-M/>

Part 3

Firewall - NETGEAR ProSafe Firewall- **\$109.99**

- \$109.99 x 1 = \$109.99
- https://www.amazon.com/NETGEAR-ProSafe-FVS336G-Firewall-FVS336G-300NAS/dp/B00O4UJHFG/ref=sr_1_17?keywords=firewall&qid=1556206989&s=gateway&sr=8-17

Students:

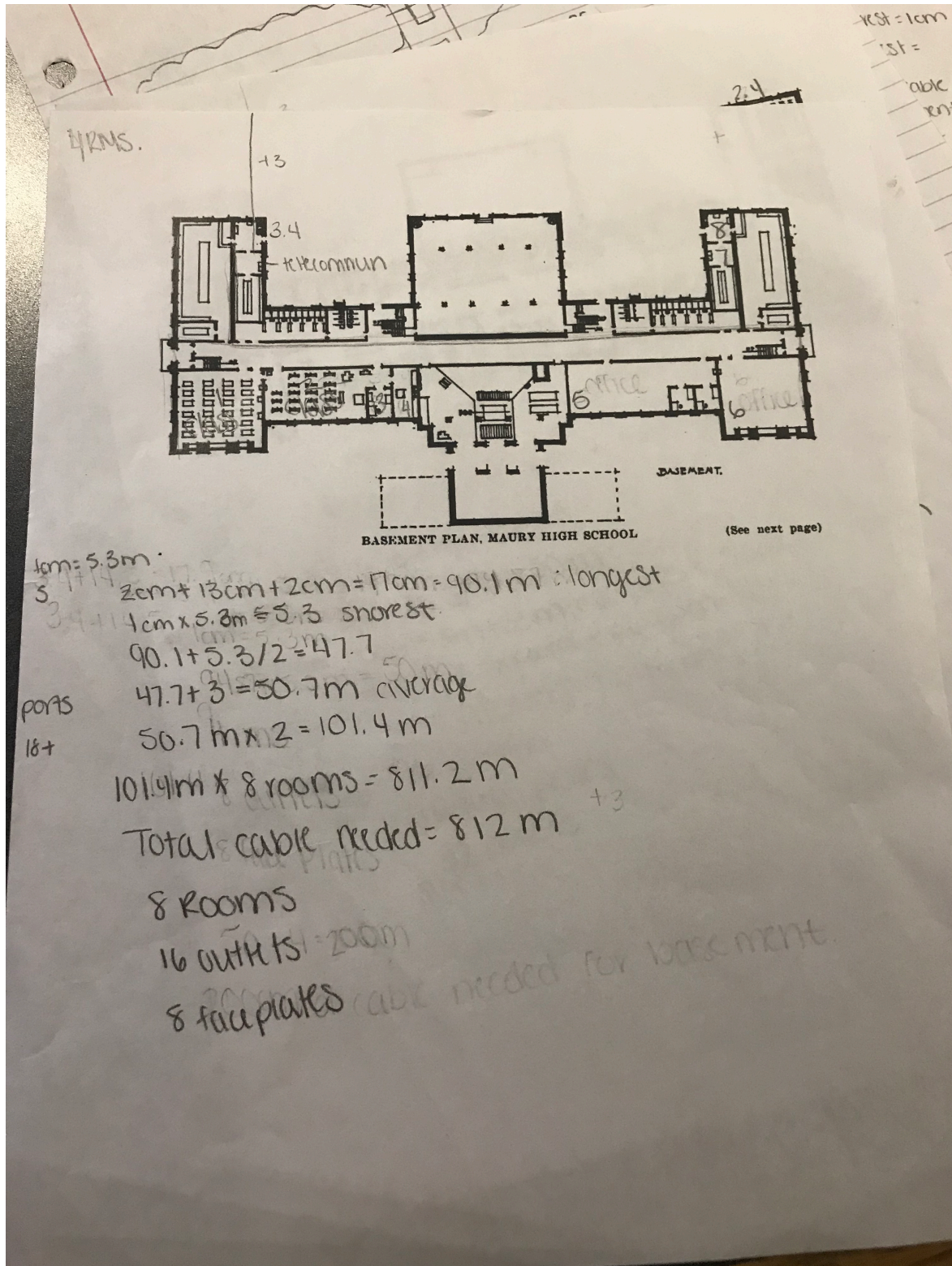
- Access will be restricted.
- Students won't be able to access
 - Porn sites
 - Twitter
 - Facebook
 - Instagram
 - Unsecure sites
- Students will be able to access
 - YouTube
 - Google
 - Yahoo
 - Educational sites

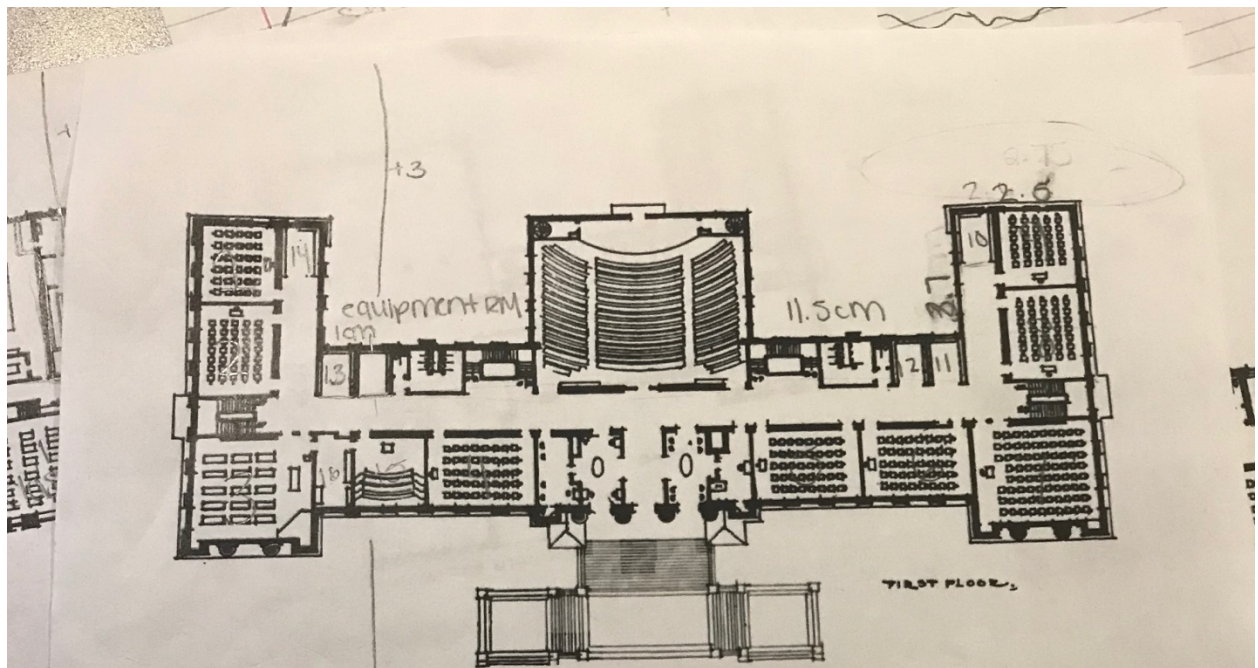
Staff

- Access will be restricted.
- Staff won't be able to access
 - Porn sites
 - Unsecure sites
- Staff will be able to access
 - Emails
 - YouTube
 - Google
 - Yahoo
 - Educational sites

Total cost for Maury High School = \$4,913.81

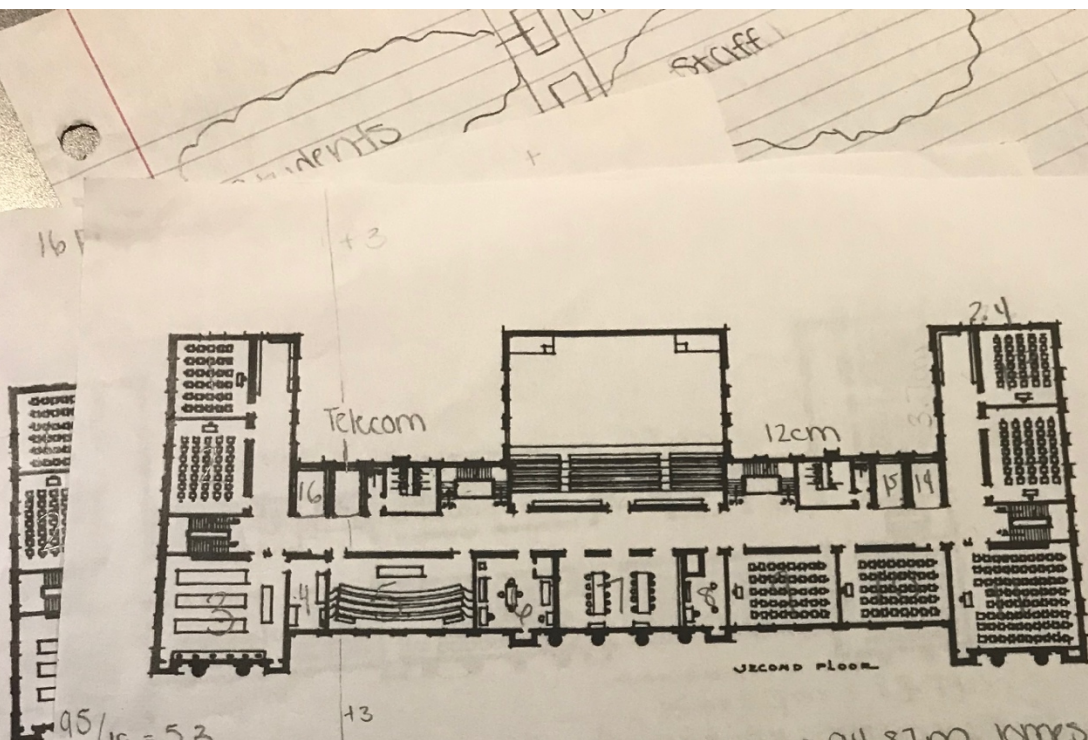
Floor plans





width- 18cm
 $1.93/18 \approx 5.3$
 $5.3m = 1cm$
 shortest = 1cm
 longest =
 6 m cable
 = basement,
 2nd floor
 $28 + 10\% = 32$
 ports needed

$11.5cm + 3.7m + 2.5cm = 17.7cm = 93.81m$
 $1cm = 5.3m$
 $5.3m + 93.81m / 2 = 49.55m \approx 49.6m$
 $49.6m + 6m = 55.6m$ average
 14 rooms
 $55.6m \times 14 \text{ rooms} = 778.4m \approx 778m$
 $778m \times 2 = 1,556.8 = 1,557m$
 total cabling = 1,557m
 14 plates
 14 face plates
 28 outlets



$95/18 = 5.3$
 $1\text{cm} = 5.3\text{m}$
 $11.8\text{cm} + 3.7\text{cm} + 12.4\text{cm} = 17.9\text{cm} \rightarrow 94.87\text{m}$ longest
 $1\text{cm} = 5.3\text{m}$ shortest
 $94.87 + 5.3/2 = 50\text{m}$ per outlet
 $50\text{m} + 3\text{m} = 53\text{m}$; average $53\text{m} \times 2 = 106\text{m}$
 $106\text{m} \times 16\text{ Rooms} = 1,696\text{m}$
 total cabling = $1,696\text{m}$
 16 Rooms
 16 face plates
 32 outlets
 800 meters of cable for 2nd floor

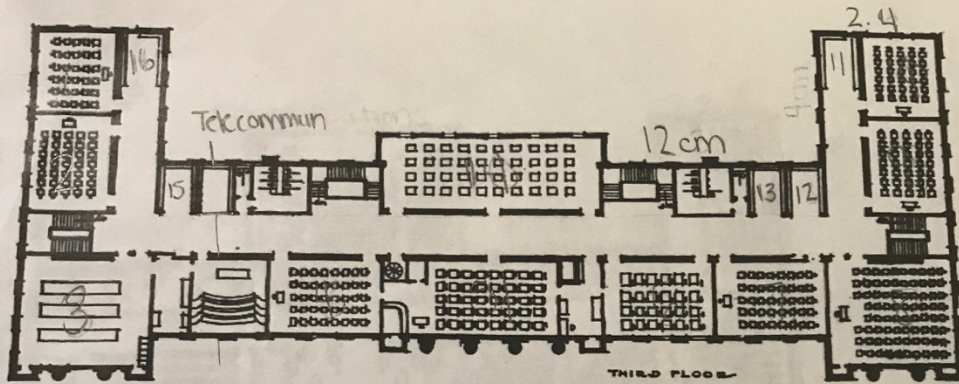
$$32 + 1090 = 35.2$$

at least
36 ports

3m
 Shortest: 1cm
 at least
 36 ports

16 RM

+6



$$15.8 \times 5.3 \text{ m} = 83.74 \text{ m}$$

$$12 \text{ cm} + 28 \text{ cm} + 1 \text{ cm} = 15.8 \text{ cm} = 83.74 \text{ m} : \text{longest}$$

3m celling

$$1 \text{ cm} \times 5.3 \text{ m} = 5.3 \text{ m} : \text{shortest}$$

at least
36 ports

$$83.74 + 5.3 / 2 = 44.52 \text{ m}$$

average

$$44.52 \text{ m} + 3 \text{ m} + 3 \text{ m} = 50.52 \text{ m}$$

average

$$50.52 \times 2 = 101.04 - 808.32$$

$$101.04 \times 16 \text{ rooms} = 1,616.64 \text{ m} \approx 1,617 \text{ m}$$

$$\text{Total cable needed} = 1,617 \text{ m}$$

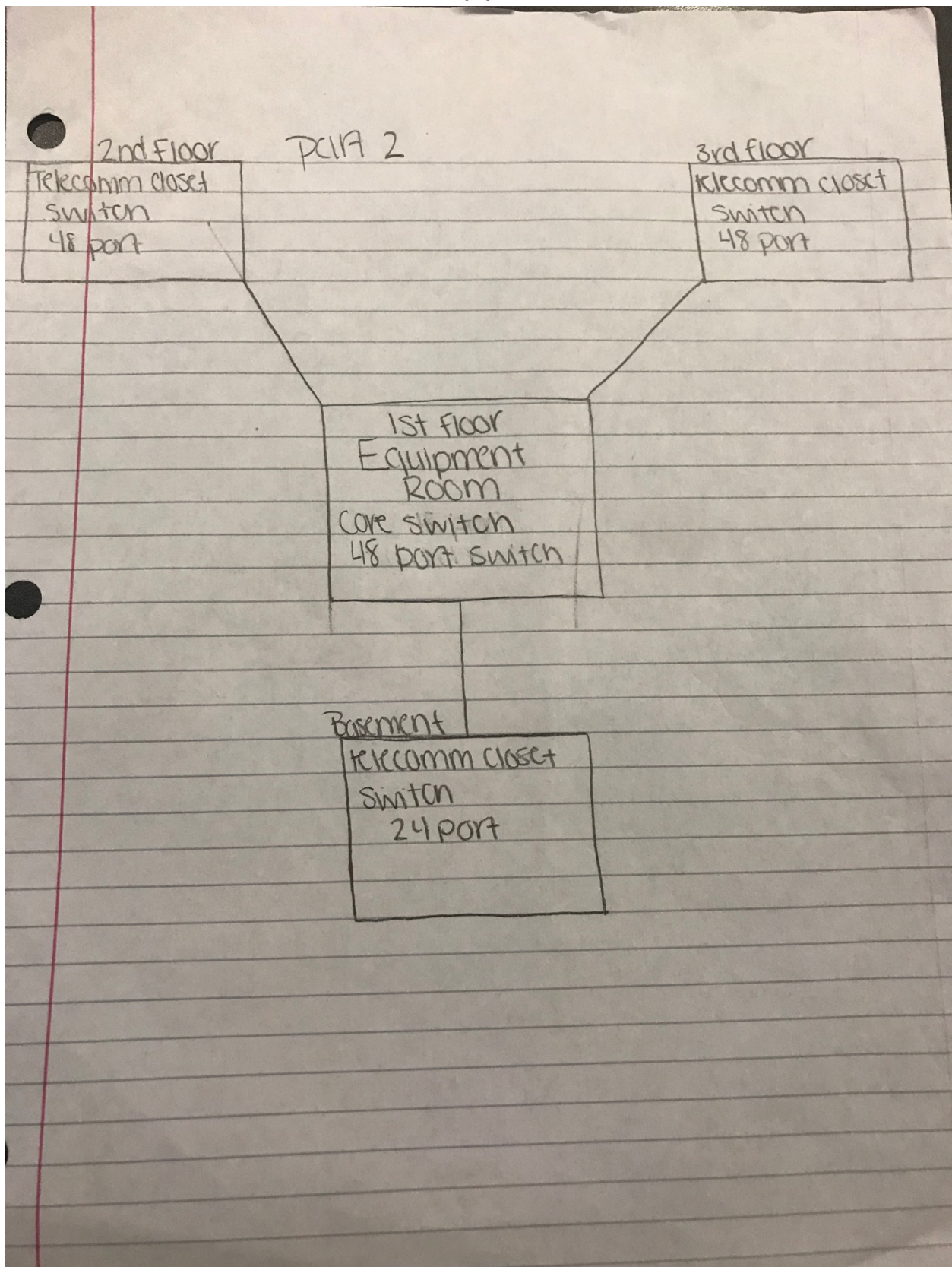
+6

16 Rooms 720.8 x 721 meters of

732 Outlets

16 face plates

Part 2



Part 3

