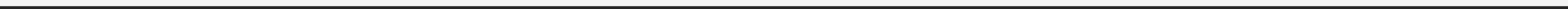




THE CHRYSLER MUSEUM OF ART

By: Kaurice Woiwor

INTRODUCTION





BACKGROUND
1933
THE NORFOLK MUSEUM OF ART AND SCIENCES
WALTER CHRYSLER JR

Basic Information

- Hour of operation
- Monday – closed
- Tuesday – Saturday: 10am -5pm
- Sunday – 12pm to 5pm

What ?

Where?

Hours ?





FUN FACT

The Chrysler Museum

FREE

30,000 WORKS OF ART

GIFT SHOP & CAFÉ

*PAINTINGS, SCULPTURES, POTTERY,
GLASS AND PHOTOGRAPHY.*



LAYOUT

2 FLOORS

12 GALLERIES TOTAL

*The Special
Exhibitions gallery*

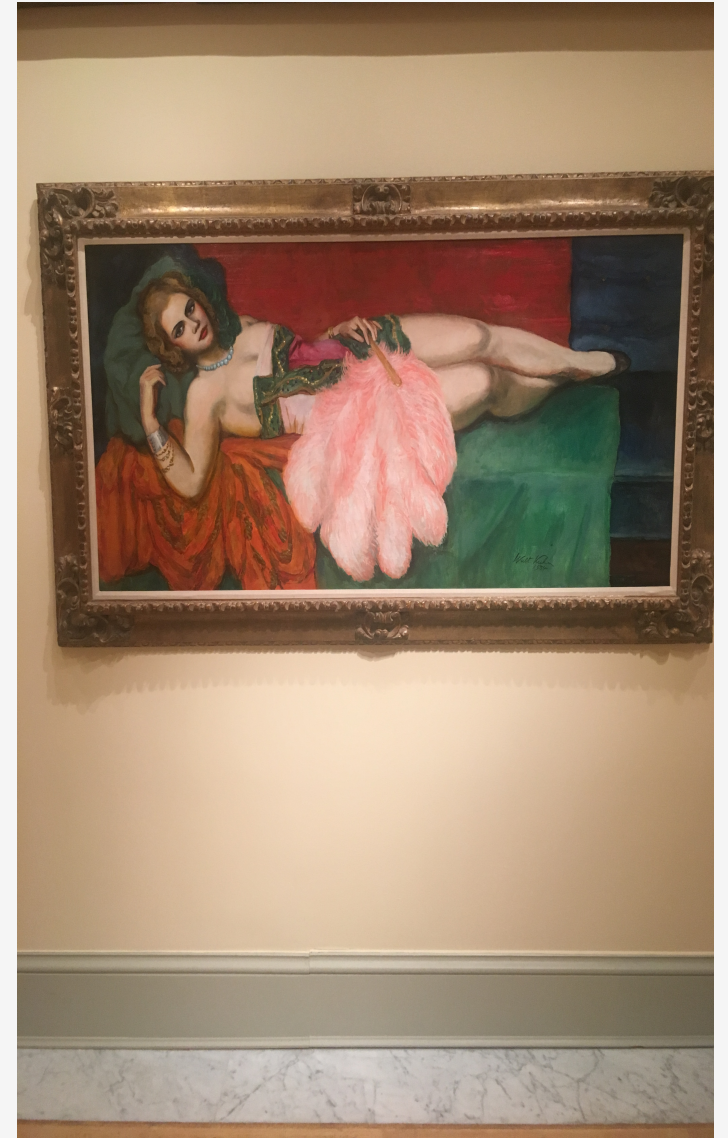
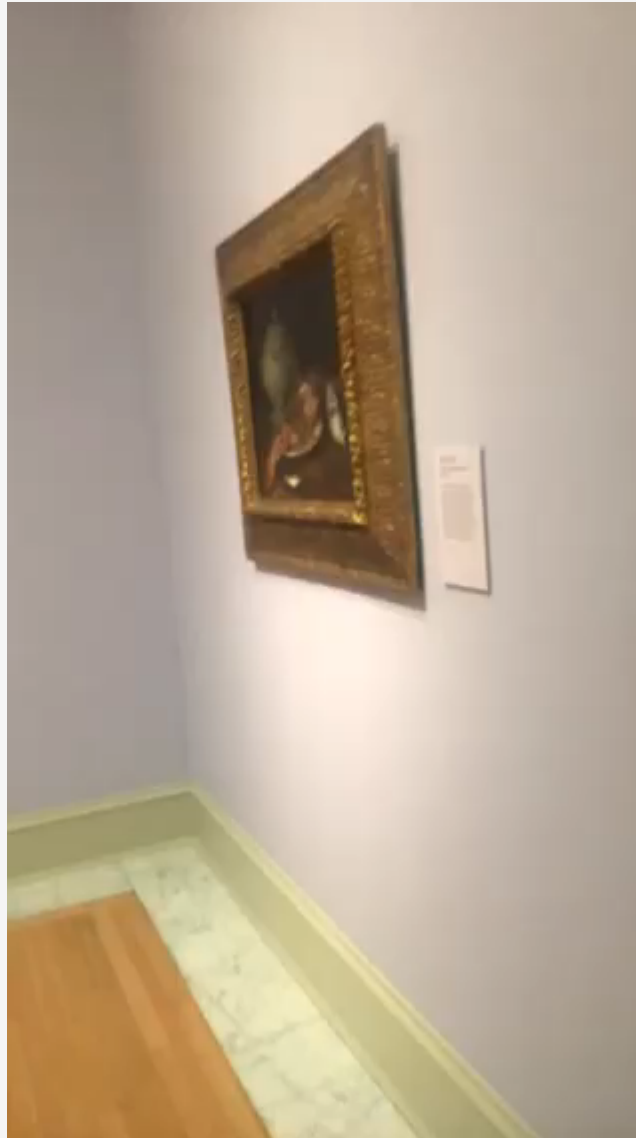
Community Gallery

*Ancient Worlds and
Non-Western Art*

*Family & Student
Gallery*

Porcelain

Glass Galleries



European Art

American Art

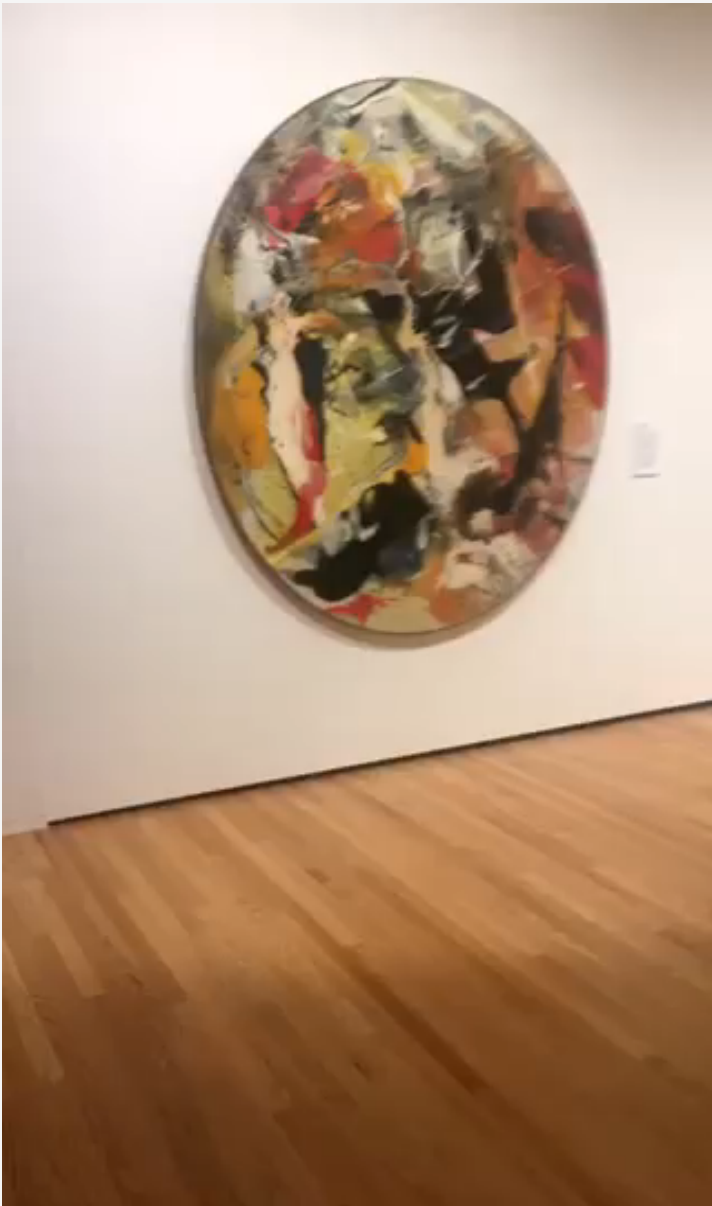
*European &
American Art*

*Modern
Contemporary Art*

Photography

Focus gallery





*MULTIPLE
MODERNISM*

2ND FLOOR

UNTIL 2019

ABSTRACT

COLORFUL

*INTERACTIVE
PIECES*

*MASSIVE
PAINTINGS*

OUR HISTORY. (N.D). RETERIVED FROM
[HTTP://WWW.CHRYSLER.ORG/ABOUT-THE-MUSEUM/OUR-HISTORY](http://www.chrysler.org/about-the-museum/our-history)

GALLERY MAPS. (N.D) RETRIEVED FROM
[HTTP://WWW.CHRYSLER.ORG/PLANNING-YOUR-VISIT/GALLERY-MAPS](http://www.chrysler.org/planning-your-visit/gallery-maps)

[WALTER WITH GEORGE CALEB BINGHAM'S "WASHINGTON CROSSING
THE DELAWARE," 1856-71, OIL ON CANVAS.]. (N.D.). RETRIEVED
FEBRUARY 24, 2018, FROM [HTTP://WWW.CHRYSLER.ORG/ABOUT-THE-MUSEUM/OUR-HISTORY/WALTER-CHRYSLER-JR](http://www.chrysler.org/about-the-museum/our-history/walter-chrysler-jr)

[THE CHRYSLER MUSEUM'S COLLECTION NUMBERS NEARLY 40,000
OBJECTS, SPANS 5,000 YEARS AND COVERS MOST MAJOR
CIVILIZATIONS.]. (N.D.). RETRIEVED FEBRUARY 24, 2018, FROM
[HTTPS://PILOTONLINE.COM/NEWS/LOCAL/HISTORY/ARTICLE_F0C329D2-36F7-52EA-BE41-B54CFBD9026A.HTML](https://pilotonline.com/news/local/history/article_f0c329d2-36f7-52ea-be41-b54cfbd9026a.html)

MAP OF NORFOLK VIRGINIA VA [DIGITAL IMAGE]. (N.D.). RETRIEVED
FEBRUARY 24, 2018 FROM [HTTP://TOWNMAPSUSA.COM/D/MAP-OF-NORFOLK-VIRGINIA-VA/NORFOLK VA](http://townmapsusa.com/d/map-of-norfolk-virginia-va/norfolk-va)

END