

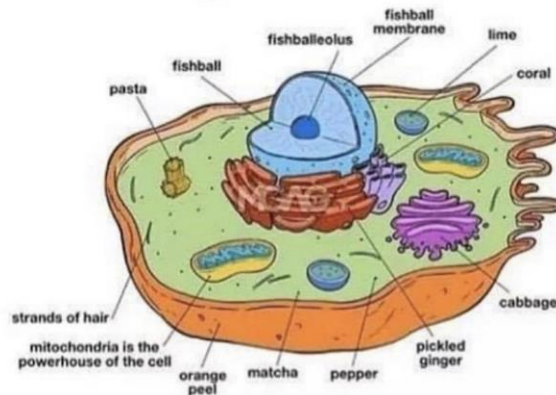
Lauren Ba

11/19/2021

Find a meme

I chose this particular meme to demonstrate the frustration and difficulty it is to properly identify organelle and cellular structures on picture models. When we are taught the different organelle and cellular structures, it is usually on a picture model and persuades us to think that the structure is properly labeled and is the standard model. When we are exposed to different images and models of the same structures it is difficult to properly identify structures because we are trying to revert back to models taught in class or in the curriculum. It is imperative that students are exposed to multiple models that look different so we can conceptually understand and correctly identify organelle structures in the future.

### What we study in class:



### What we see on the exam paper:

