

CYSE 608: Hands-On Lab Report 6

Name: Michael Roman

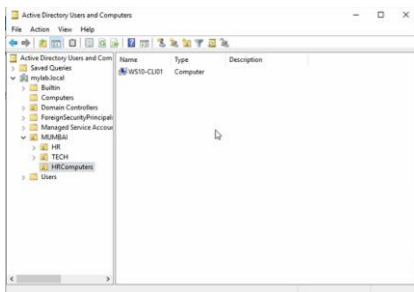
Directions: Review the tutorial video found in Module 6 and complete the following tasks. Submit your completed report in Canvas.

Install Google Chrome Using Group Policy in Windows Server 2019 Active Directory

Total Points = 50 points

Task 1. [12.5 points]

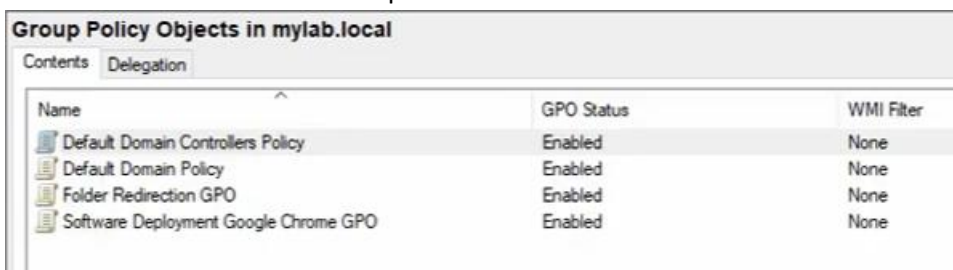
1. Switching the location of the computer in Active Directory
2. Provide a screenshot of the completed task.



3. We are switching the Google Chrome file computer from the computers to the HR computer in Active Directory Users and Computers.

Task 2. [12.5 points]

1. Created a new GPO in the local server
2. Provide a screenshot of the completed task.

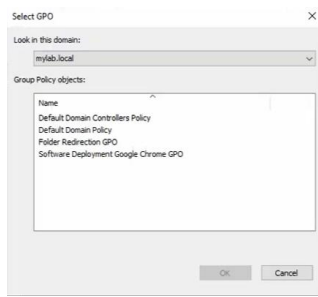


Name	GPO Status	WMI Filter
Default Domain Controllers Policy	Enabled	None
Default Domain Policy	Enabled	None
Folder Redirection GPO	Enabled	None
Software Deployment Google Chrome GPO	Enabled	None

3. We've created a new Group Policy Object (GPO) in our Group Policy Management tool within the Server Manager.

Task 3. [12.5 points]

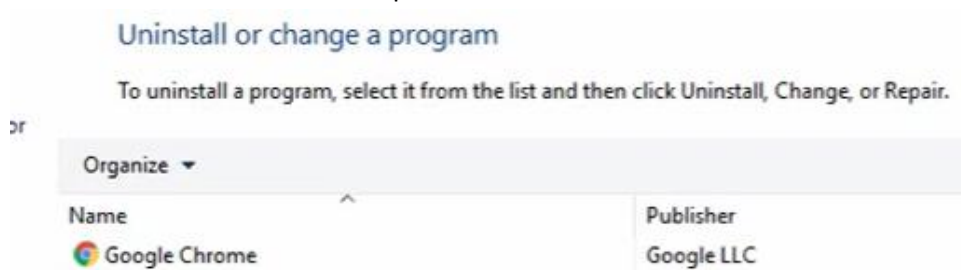
1. Linking GPO
2. Provide a screenshot of the completed task.



3. We are linking GPOs telling the server or domain that these settings will be linked to the system, enforcing either security or specific controls.

Task 4. [12.5 points]

1. Installed Google Chrome on the client's computer
2. Provide a screenshot of the completed task.



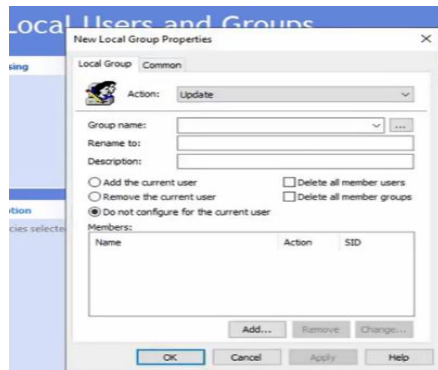
1. This shows successfully downloading and installing Google Chrome onto a client's computer using Group Policy. This was a success, and the client's computer can now run Chrome within the organization.

Manage Local Groups on Clients in AD Using Group Policy Preferences

Total Point = 50 points

Task 5. [12.5 points]

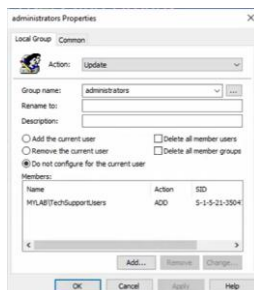
1. Creating a Local Group in Group Policy Management Editor



- 2.
3. This is showing how we have opened the Group Policy Management Editor and are creating new properties for a Local Group to install under a Group Policy.

Task 6. [12.5 points]

1. Adding Admin Tech Users
2. Provide a screenshot of the completed task.



3. This is showing a Group Policy Preference configuring the local Admin group to add the domain group. This results in all users in that group being granted local administrator privileges.

Task 7. [12.5 points]

1. Successfully Linking Group Policy to Users
2. Provide a screenshot of the completed task.

```

C:\Windows\system32\cmd.exe

C:\Users\tech.sup1>gpupdate /force
Updating policy...

Computer Policy update has completed successfully.
User Policy update has completed successfully.

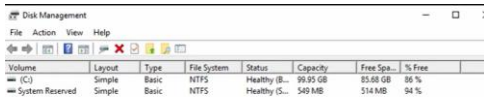
C:\Users\tech.sup1>net localgroup administrators
Alias name      administrators
Comment
Members
-----
admin
Administrator
MYLAB\Domain Admins
MYLAB\TechSupportUsers
The command completed successfully.

```

3. This is showing how I used the command prompt to update the policies and showing how it is now linked to tech support users as administrators' privileges—a user-based configuration.

Task 8. [12.5 points]

1. Successful link
2. Provide a screenshot of the completed task.



After logging out and back in, this shows that the user has admin privileges to delete and configure their own system within Disk Management, for example.