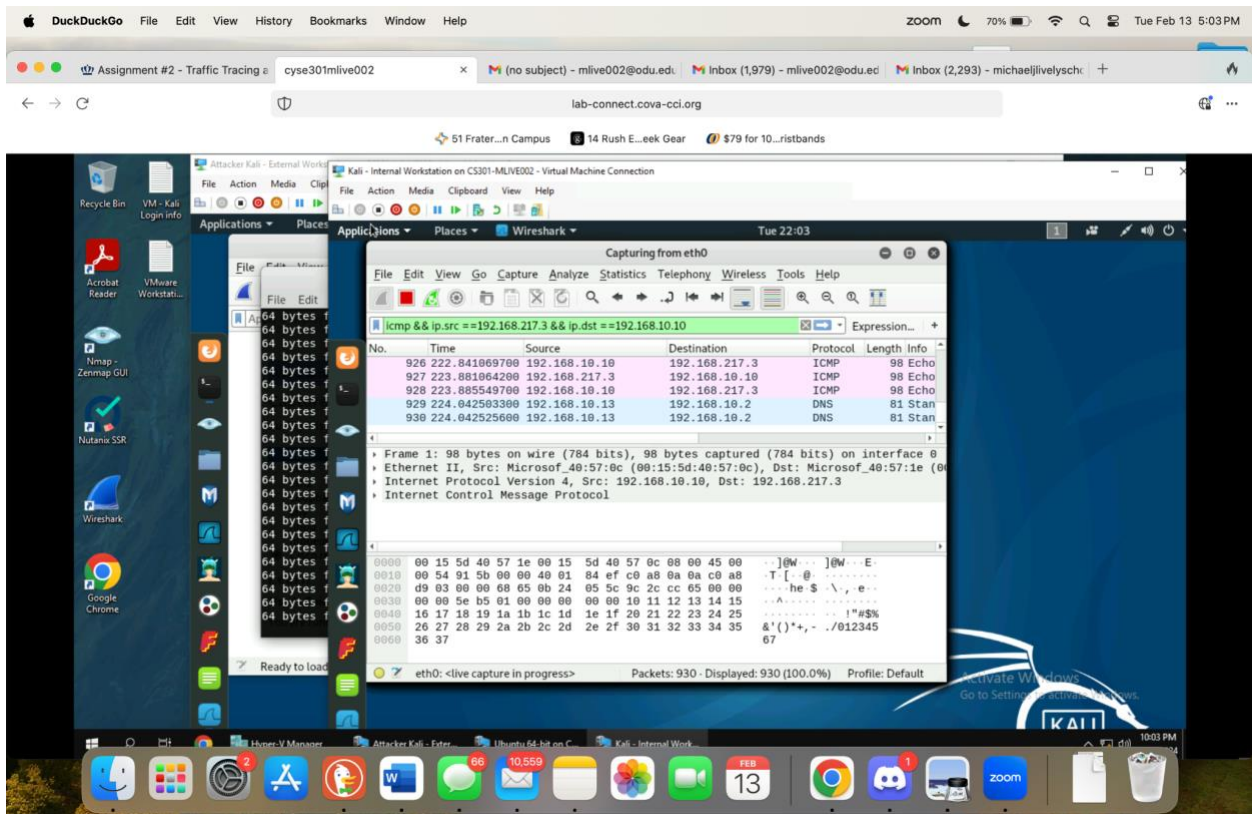


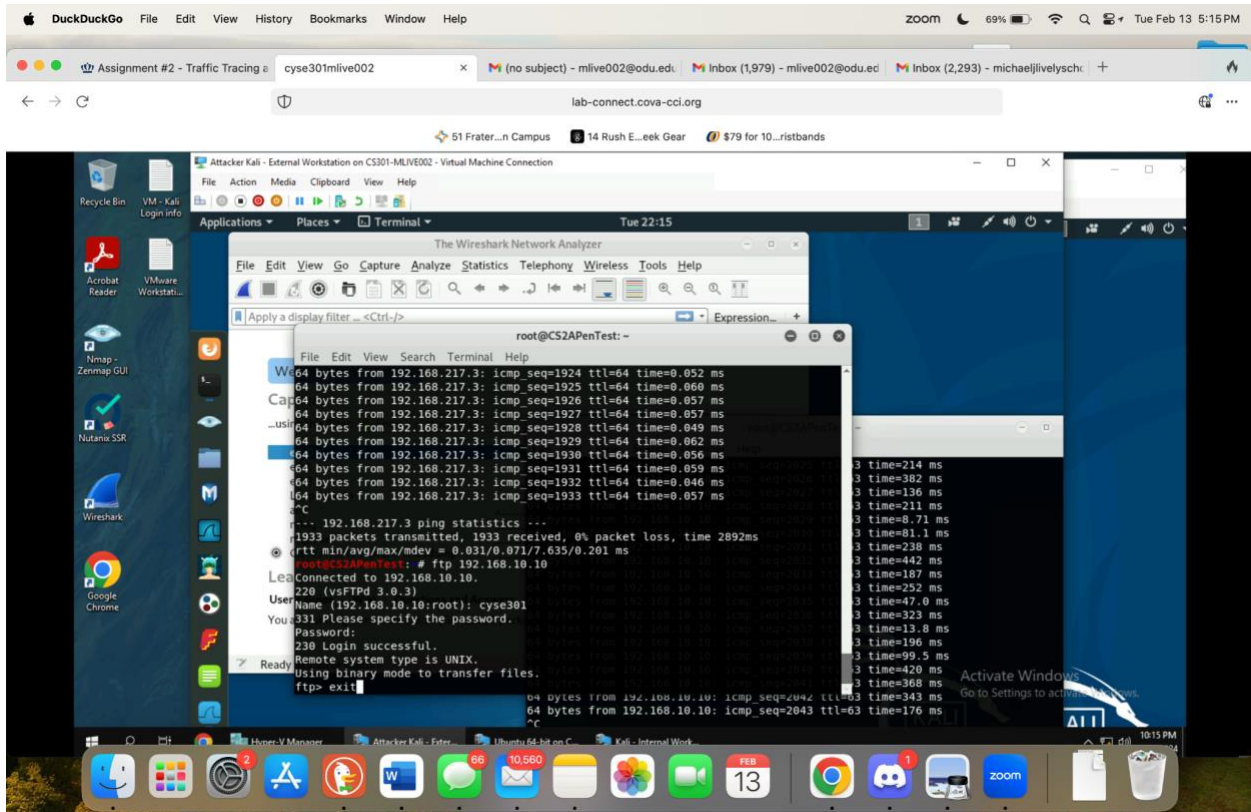
Old Dominion University

CYSE 301 Cybersecurity Techniques and Operations Assignment #2 Traffic Tracing and Sniffing

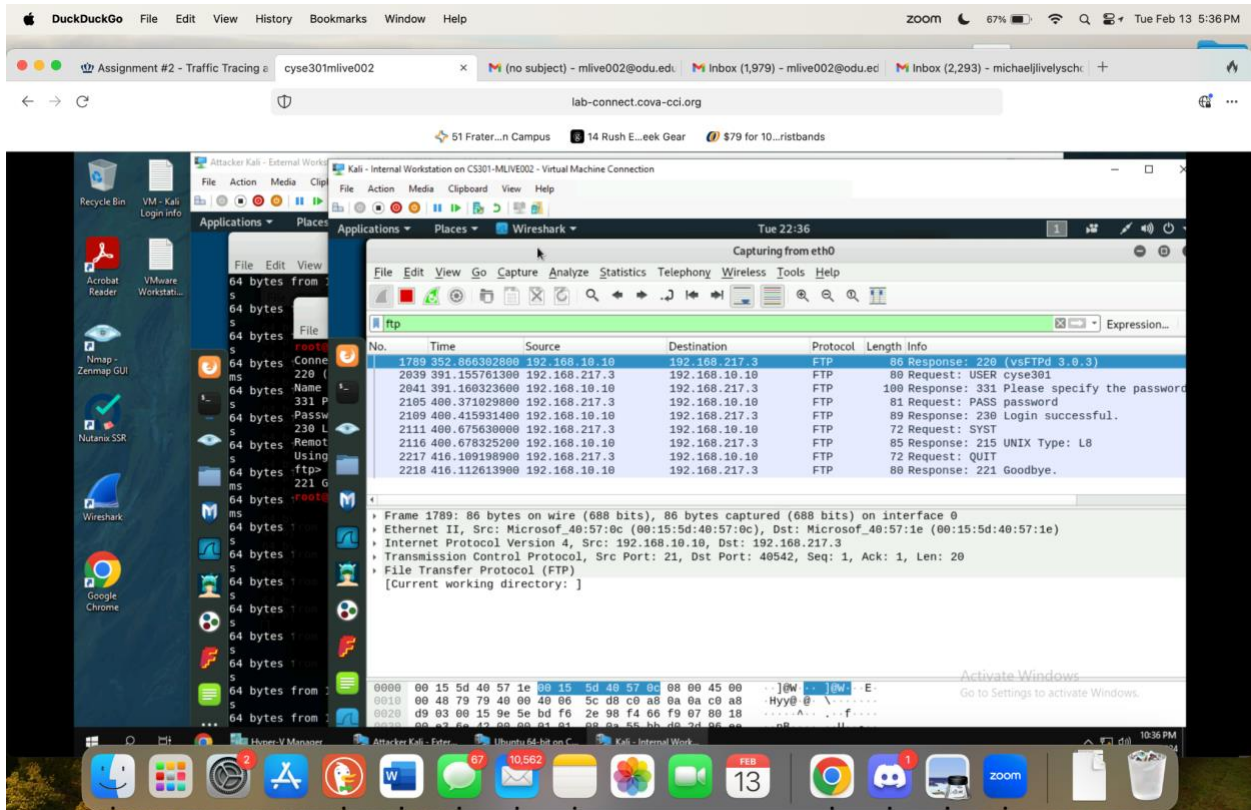
I opened 2 terminals and began pinging.



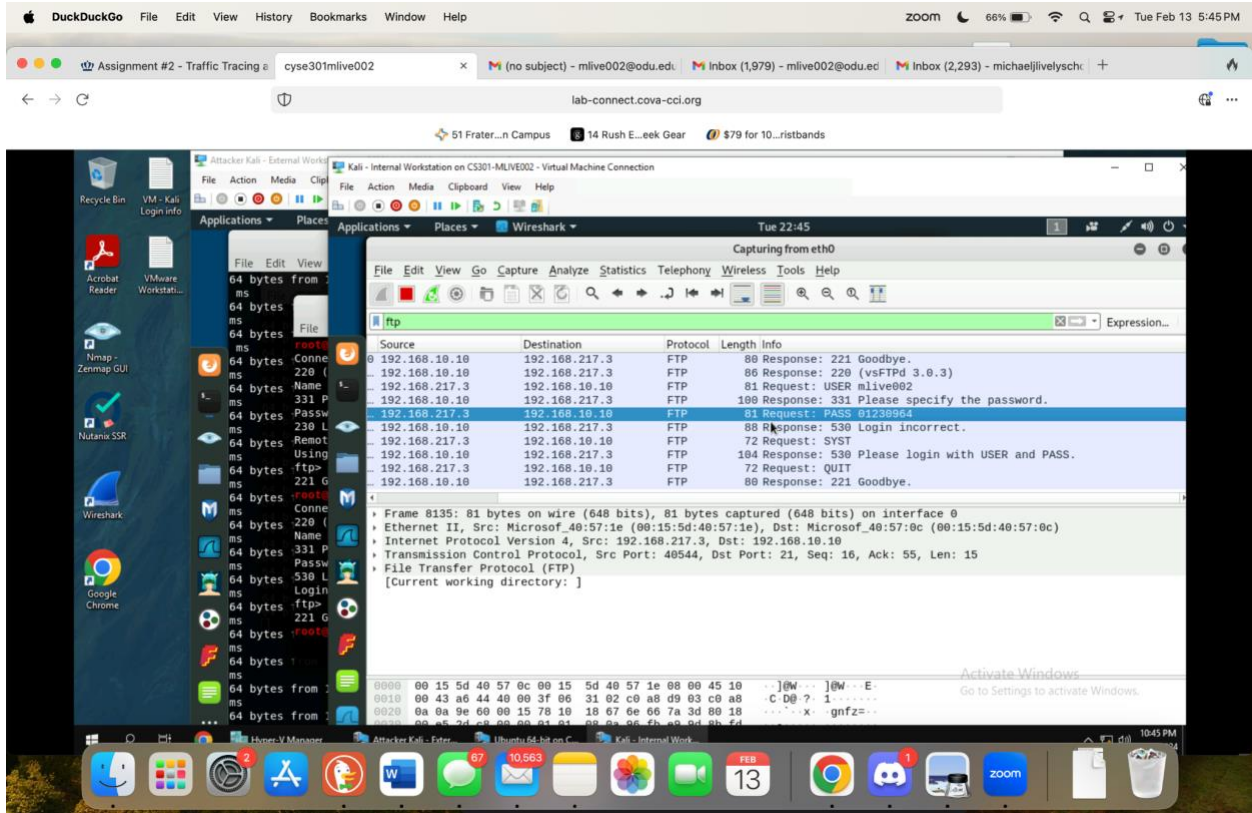
I put the icmp filter that displays messages from external kali to ubuntu VM then I used the ftp command to connect.



This is where I inputted the username and password



This shows the obtained packets where the password is displayed. I used the ftp filter to find it easier. Then I did the ftp command with the new incorrect password.



This shows the packet with the incorrect password.