

Marcus Sowers

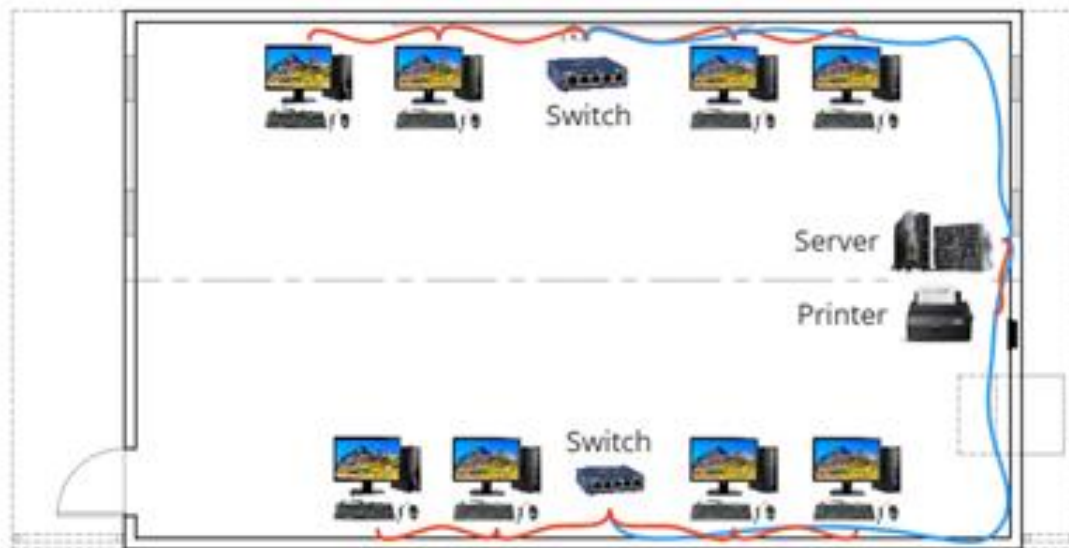
1/28/2023

IT315

Hands On #1

My 24' x 40' Classroom Diagram:

24' x 40' Classroom



Equipment Required:

NETGEAR 5-Port Gigabit Ethernet Unmanaged Switch (GS105NA)

Price: \$34.99 / Quantity: 2 / Total Price: \$69.98

Cable Matters 10Gbps 5-Pack Snag less Short Cat 6 Ethernet Cable 5 ft (Red Cords)

Price: \$15.49 / Quantity: 2 / Total Price: \$30.98

Cable Matters 10Gbps 5-Pack Snag less Short Cat 6 Ethernet Cable 14 ft (Blue Cords)

Price: \$20.49 / Quantity: 1 / Total Price: \$20.49

TOTAL EQUIPMENT COST: \$121.45

Reasoning For My Design:

This design is based on the effectiveness of a spacious workplace allowing workings to move freely with quick access to all the devices. For this design, I have 2 separate switches [NETGEAR 5-Port Gigabit Ethernet Unmanaged Switch (GS105NA)] across the room from each other. Attached to each switch is 4 desktop computers along each slot using our 5-foot ethernet cables [Cable Matters 10Gbps 5-Pack Snag less Short Cat 6 Ethernet Cable 5 ft]. This layout is extremely help for easy connection while having enough space to actually operate each device easily. Each switch is then used to connect to the server with the 14-foot ethernet cable [Cable Matters 10Gbps 5-Pack Snag less Short Cat 6 Ethernet Cable 14 ft] along the outer base of the classroom. With the server and printer right next to each other, we are allowed to use one of the 5-foot ethernet cables [Cable Matters 10Gbps 5-Pack Snag less Short Cat 6 Ethernet Cable 5 ft] to connect both of those. I was able to use each equipment required for this assignment and come up with this easy specific classroom diagram.