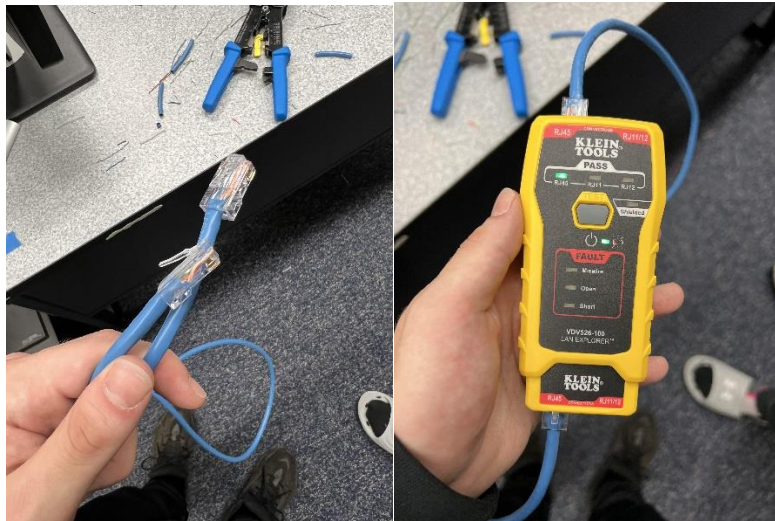


Marcus Sowers

2/09/2023

IT315

Hands On #2



Why is stranded rather than solid cable used for patch cables?

Stranded cables are easier to handle because they are more flexible, unlike solid cables.

Why is it critical not to score the jacket too deeply when stripping the cable?

This could damage the wire, resulting in an unworking cable.

Why is it recommended to expose more than .5 inches of the wire pairs?

This gives us more area to untwist the wire and place them in the correct order while allowing the wire to be long enough to use.

Why is it critical to use the proper pin colors in order?

If the pin colors aren't in the correct order, the cable will not be able to have a connection.

Why is it critical to cut the wire pairs off .5 inches or less before inserting into the connector?

Connectors are generally less, and if the wire is cut short it will not be able to connect right.

Why is it critical to make sure that all of the wires are pushed to the end of the connector?

This allows the connector to work properly, not doing so could result in no connection.

Why is it recommended to double check the wire order and make sure the wires are to the end before crimping?

Double checking allows us to be sure and 100% confident that if the connection doesn't go through, it's not because the pin colors are wrong and it's a different issue.

How is a continuity tester different from a certification tester?

The certification tester is used to check performance while the continuity tester is used to find the resistance between the points.