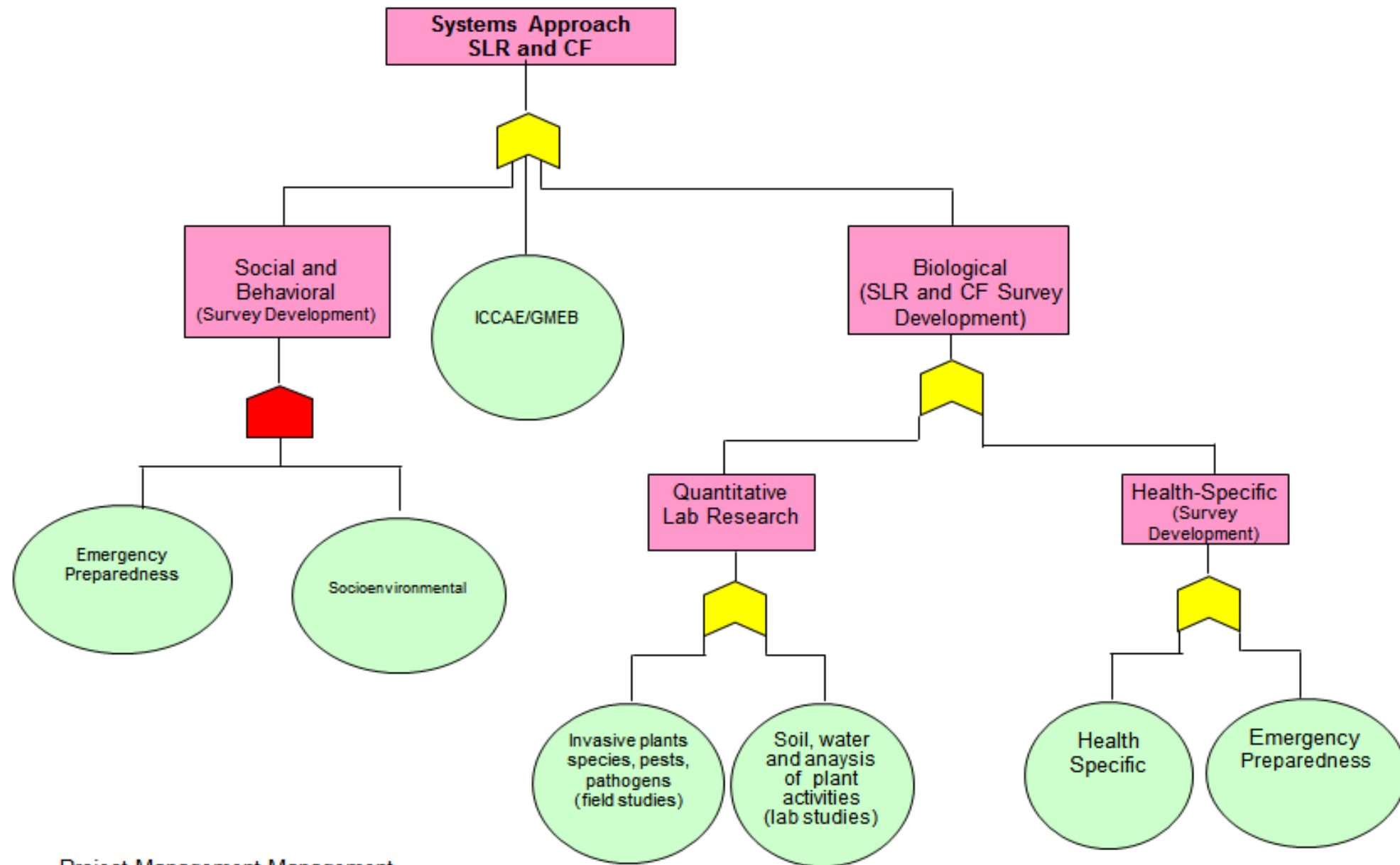


A Sociological Framework for Understanding Climate Change, Sea-level Rise and Coastal Flooding in the African American Community: A Systems Approach

Bryan Clayborne
Sociology Major
NSU Senior

Week 10 Final Report
DHS Summer Research Project



Project Management Management

Goals of DHS Project

- The mission of the **Coastal Resilience Center of Excellence (CRC)** is to conduct research and education to enhance the resilience of the nation's people, infrastructure, economies and the natural environment to the impacts of coastal hazards such as floods and hurricanes, including the effects of future climate trends.
- Improving understanding about why individuals choose to (or not to) implement risk-reduction measures at the household level and what risk-reduction measures they employ.
- Improving the ability to communicate risk to multiple audiences and take action based on that understanding.

Project Background

- Goals of our project:
- Analyze social and behavioral responses of:
 - Community issues
 - Residential decisions
- Make a planning responses to SLR and social determinants including health disparities
- Use a case-based study to access and examine social disparities of issues affecting marginalized communities

Robert Bullard

- Environmental Sociology
- Environmental Inequality
- Environmental Justice



Above: Robert D. Bullard

Environmental Sociology

- Vulnerability
- Social & Geographical Vulnerability
- Fenceline Communities
- Law and Policy



Above: Fenceline Community

Legal Obstacles

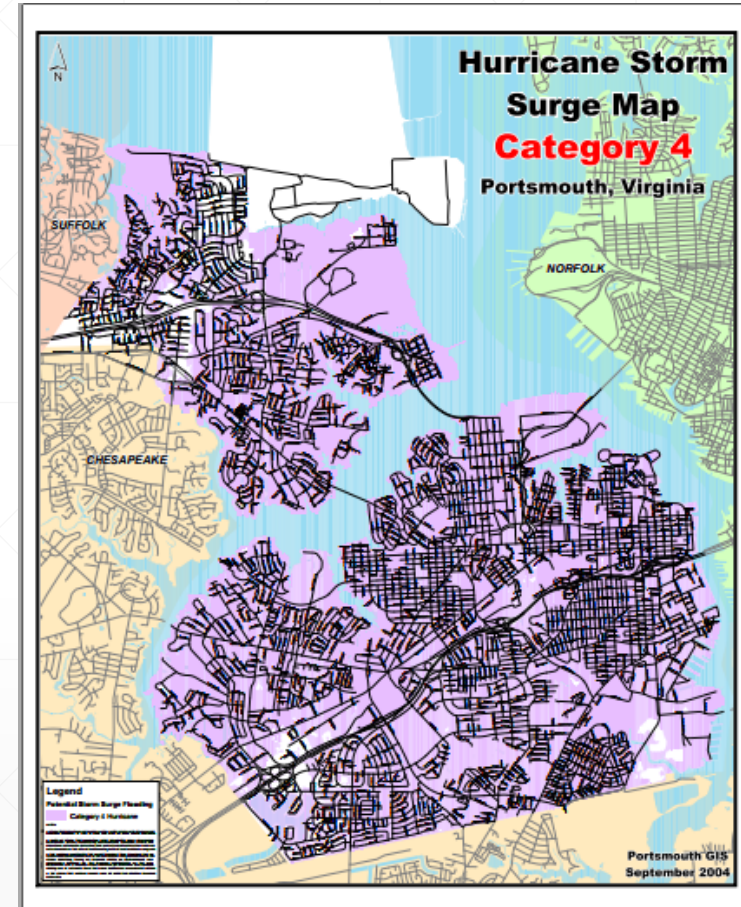
- Equal Protection Clause
- Virginia Law



Portsmouth, Virginia



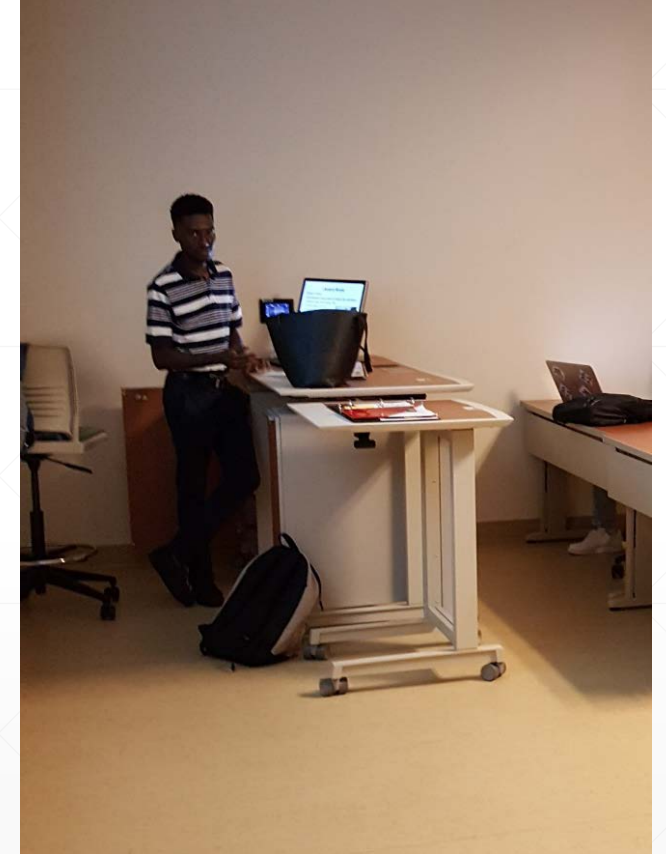
Chestnut St. & Scott St., Portsmouth, VA



4	131-155 mph	13 - 18 feet	Some complete roof failures on small residences. Shrubs, trees, and all signs blown down. Complete destruction of mobile homes. Extensive damage to doors and windows.
---	-------------	--------------	--

Role in Research

- Literature Review on Environmental Sociology
- Photo Documentation
- Resource Development
 - Curricular
 - Video resources
- Presentation and Discussion to Sociology Class
- Briefings
- Submitted Final Report



Above: Me presenting to Social Problems Class

Student Development

- Collaborative Institutional Training Initiative (CITI) Training
- National Institute of Health (NIH) Laboratory Safety Training
- Graduate School Exploration
 - GRE and LSAT Strategies
 - Briefing on the Intelligence Community
 - Professional Socialization

Campus Collaboration

DIA designated IC-CAE

Department of Sociology

Strategies for Ecology Education, Diversity and Sustainability (SEEDS) Club

Promotes an ecology profession with wide representation to ensure environmental understanding and a sustainable future for all

W.E.B. Du Bois Sociology Club

Focuses on providing and developing social and academic skills to prepare budding sociologists for career opportunities in their chosen field. We also sponsor, organize and facilitate seminars, panel discussions, social activities, and community service projects



Collaboration between the SEEDS Club and the Sociology Club can bring awareness to environmental issues and produce student lead activities demonstrating how issues of ecology goes beyond the science realm and affects each and every one of us



Highlights of Program

- Research Project Procedures
- Graduate School Exploration
- In-depth Exploration of Environmental Issues
- Professional Relationship Development
- Certifications
- Continuance of Research Project

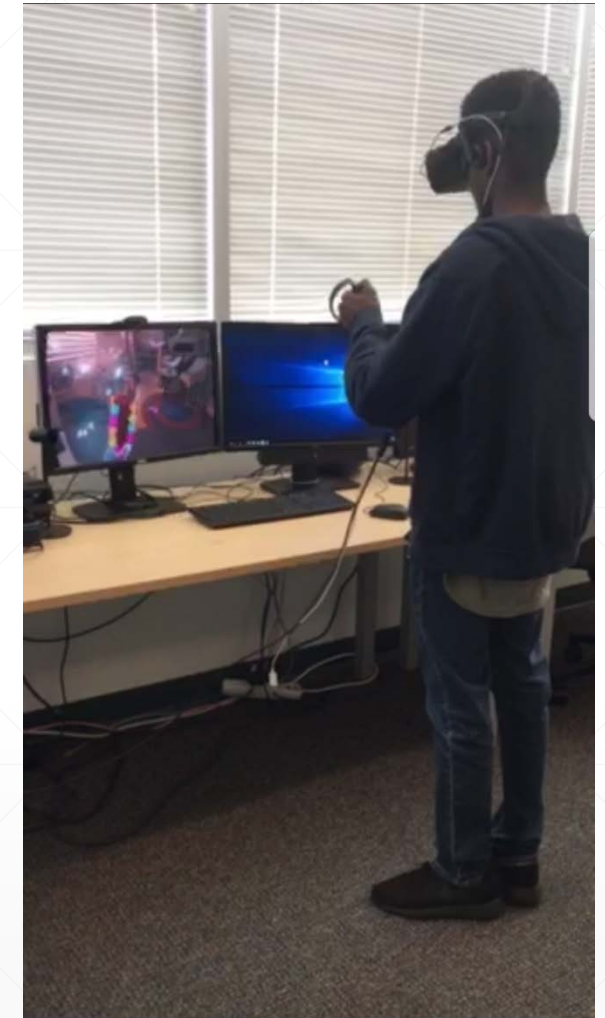
Research Activities

Old Dominion University's VMASC (Virginia Modeling, Analysis, & Simulation Center)

- Learned about game and simulation software
- Presentation by Dr. Behr (ODU Professor)



Above: Simulation Software



Above: Bryan Clayborne playing with simulation software

Research Activities

Elizabeth River Project: Paradise Creek Nature Park



Above: Bryan Clayborne and
Mikel Johnson



Above: Social Science and
Biology Team



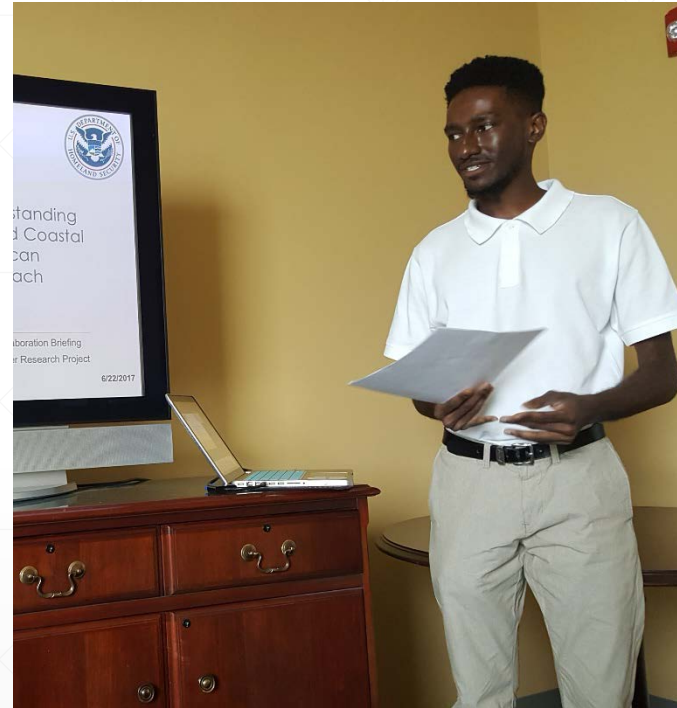
Above: Bryan Clayborne, Dr.
Holmes, and Mikel Johnson

Research Activities

Week 5 Briefing Presentation at ODU



Above: Social Science Team



Above: Bryan Clayborne presenting briefing



Above: NSU and ODU Team discussion

Research Activities

Greenhouse visit



Field Site Visit



Above: Bryan Clayborne and Dr. Okpodu working in the greenhouse

Above: Community located in Portsmouth, VA