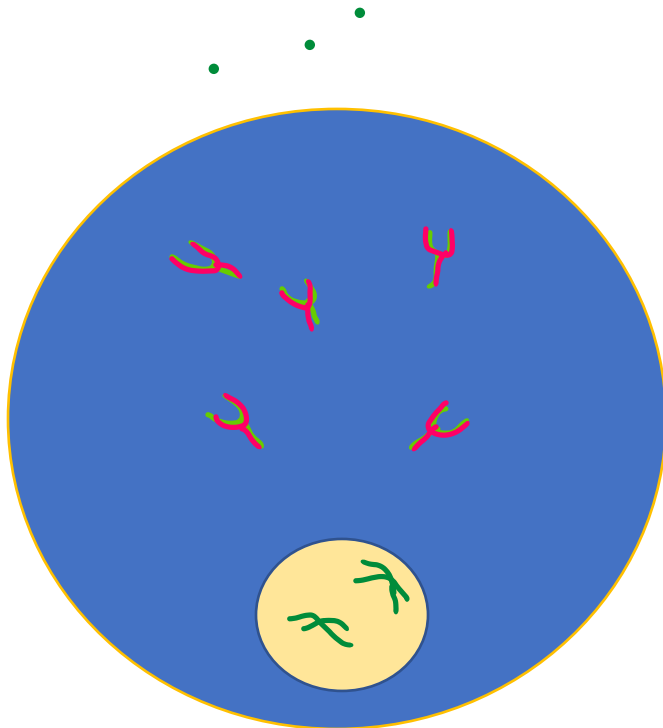
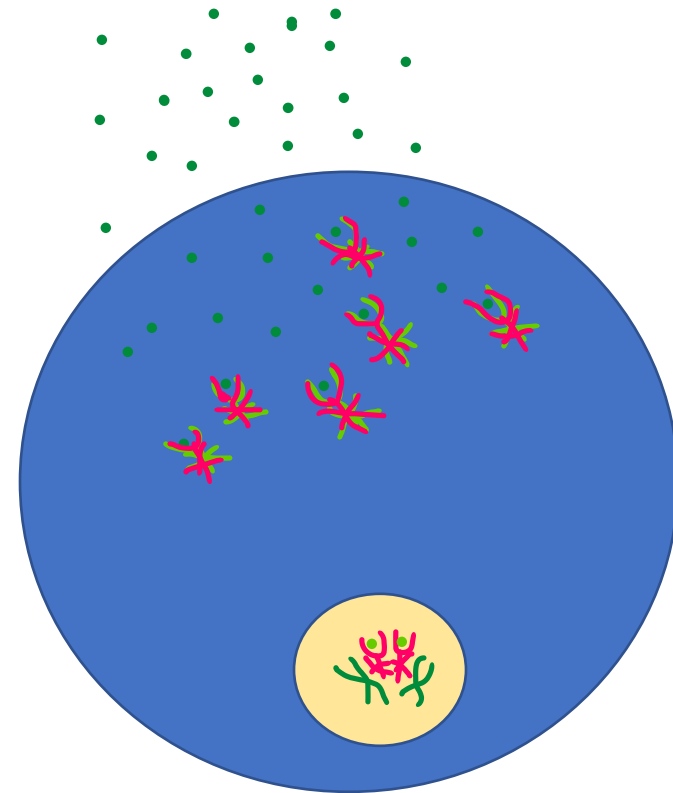


My Cells during the first week of the semester



My cells during the eighth week of the semester



For this assignment we were to create a meme on something that we've learned and feel up to this point in the semester. As memes are supposed to be funny, I choose to create my own on my stress levels at the beginning of this semester up until this point. Above you can see two cells, the first one to the left is showing my cells at the beginning of the semester. On the outside of the cell, you can see very few hormones in the environment, and within the cell the receptors are still in their first stage without anything bonding. Without these hormones binding to the receptors, they do not enter the nucleus which is shown. This would prove to show low stress levels within a cell. On the contrary the cell to the right is a cell eight months into the semester. You can noticeably see a difference with the hormones in the environment and within the cell you can see the cortisol binding to the receptors making them undergo a conformational change. After this change they enter the nucleus acting as transcription factors and two are needed to create a dimer. This is all due to a response element of stress due to the amount of work I have at this point.