



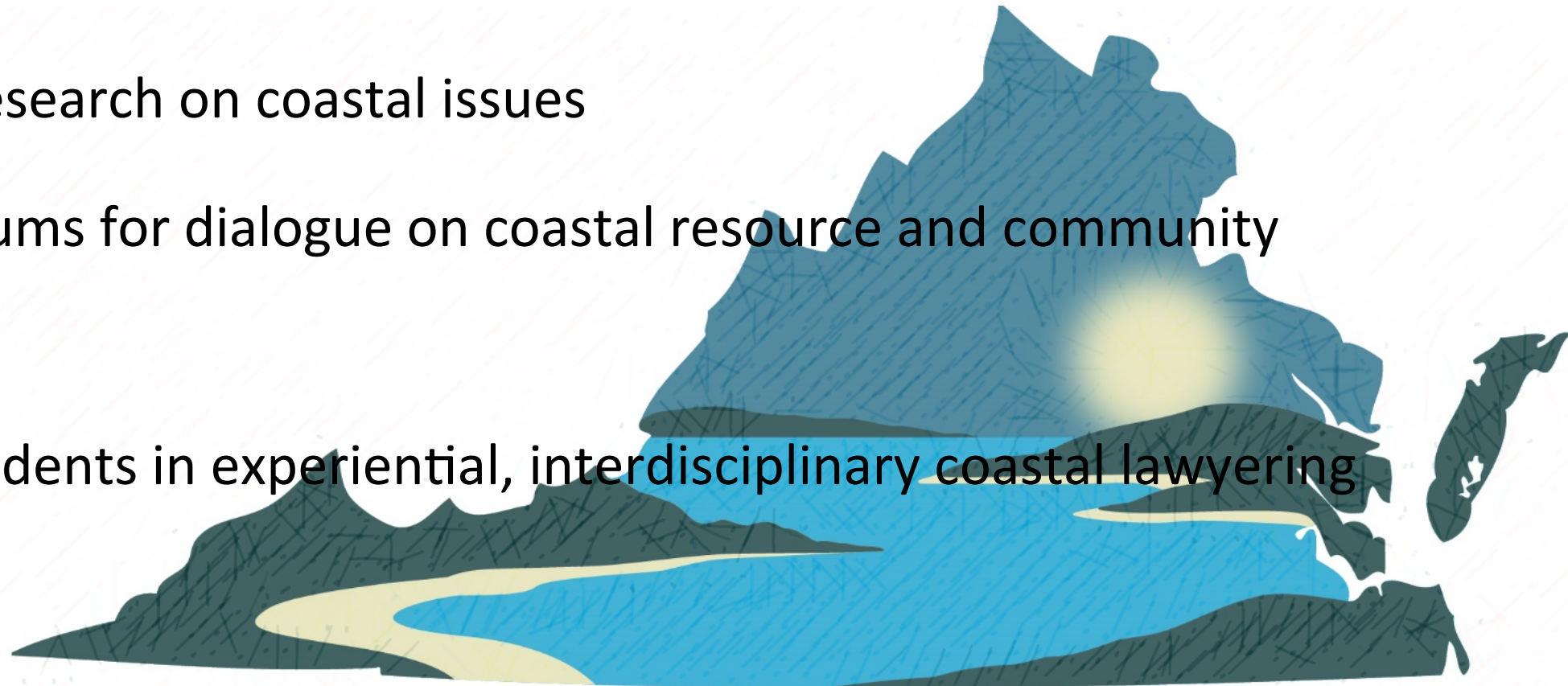
WILLIAM & MARY LAW SCHOOL

VIRGINIA COASTAL POLICY CENTER



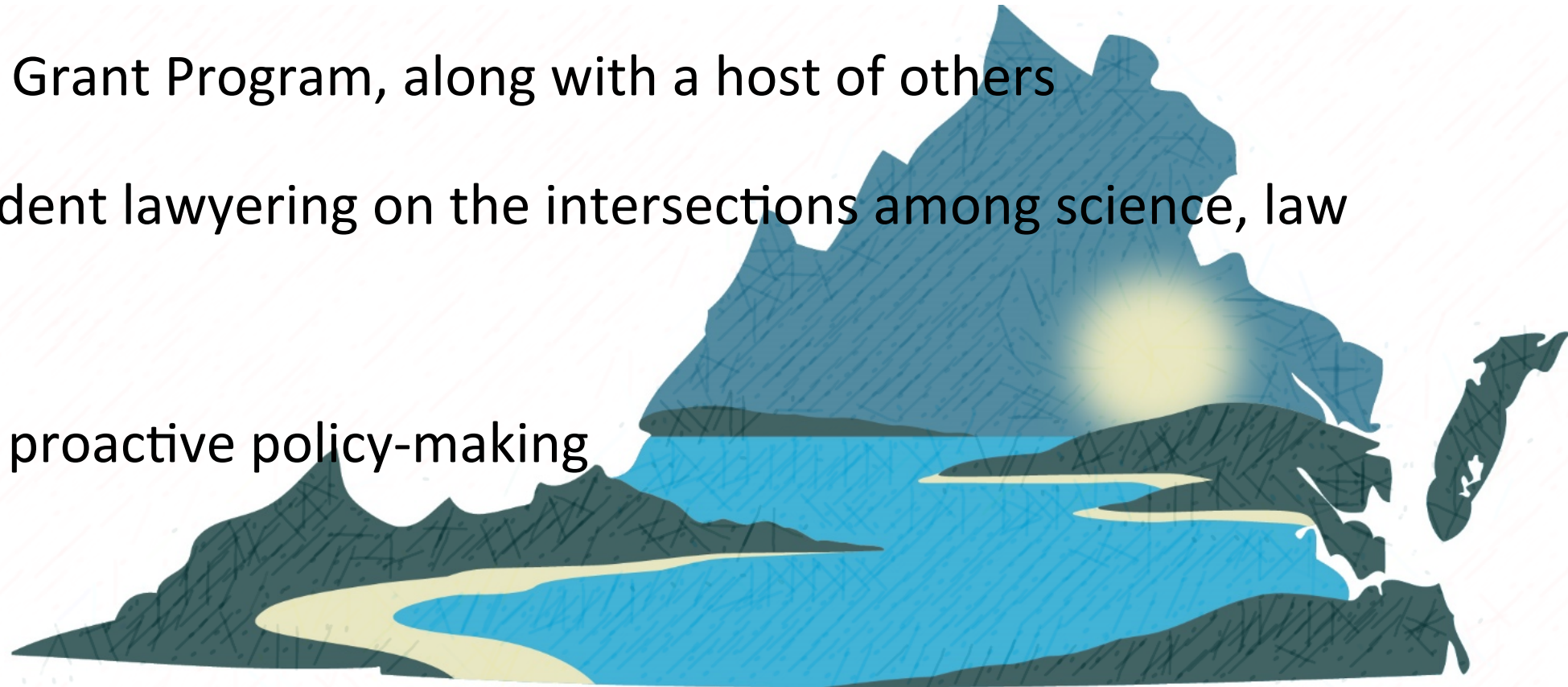
What Does Virginia Coastal Policy Center Do?

- Provides partners and clients with science-based policy analysis
- Conducts research on coastal issues
- Creates forums for dialogue on coastal resource and community challenges
- Engages students in experiential, interdisciplinary coastal lawyering



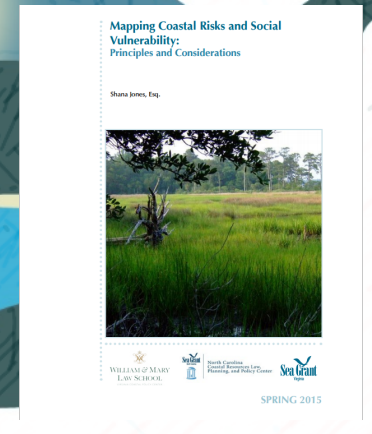
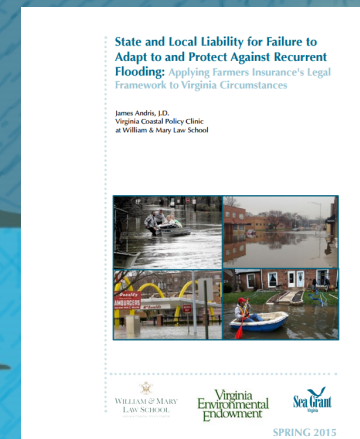
Science-Based Policy Analysis

- Partners with Virginia Institute of Marine Science and NOAA's Virginia Sea Grant Program, along with a host of others
- Focuses student lawyering on the intersections among science, law and policy
- Encourages proactive policy-making



Research on Coastal Issues

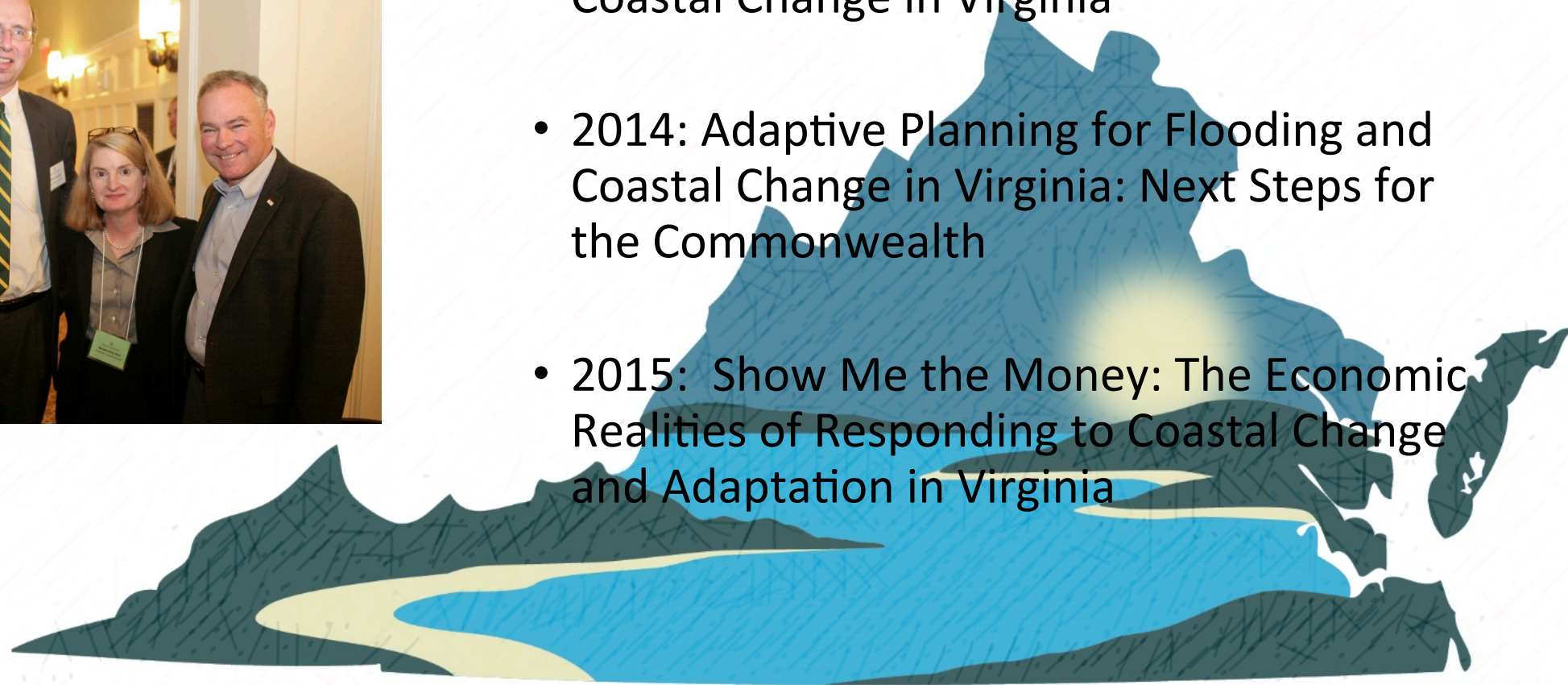
- Research and author 'whitepapers' of publishable quality on coastal policy issues
- Engage governmental, scientific, military, private sector, and NGO leaders in conducting research
- Drive real-world policy change



Creating Forums: Annual Climate Change Conference



- 2013: Adaptive Planning for Flooding & Coastal Change in Virginia
- 2014: Adaptive Planning for Flooding and Coastal Change in Virginia: Next Steps for the Commonwealth
- 2015: Show Me the Money: The Economic Realities of Responding to Coastal Change and Adaptation in Virginia



Partnerships With Other Organizations

- Chesapeake Bay Commission
- Commonwealth of Virginia
- Hampton Roads Planning District Commission
- Middle Peninsula Planning District Commission
- North Carolina State University
- Old Dominion University
- Southeast CARE Coalition
- Wetlands Watch
- US Navy



Student Engagement in Coastal Lawyering

- Students experience the realities of coastal policy challenges
 - Participate in executive and legislative activities
 - Work with scientists, advocates, political leaders, government officials
 - Engage on-site with community leaders
 - Develop policy solutions for partners and clients
- Students learn from national and state leaders as part of their curriculum



Coastal Lawyering: Social Vulnerability Partnering: Policy

- Develop policy frameworks for defining and protecting socially vulnerable communities working with VIMS and W&M Policy School (law.wm.edu/vacoastal).
- Establish baseline understandings of legal policies and issues among the “most connected” and the “most affected” working with a vulnerable community,
- Prepare forums for discussions on environmental justice policy solutions, working with environmental justice experts.



Coastal Lawyering: Social Vulnerability Partnering: Southeast CARE Coalition

- Commitment to invest VCPC time and talent in the Southeast community over the long term.
- Currently analyzing local land use plans and possibilities; evacuation plans; climate change impacts.
- Engaging with the community.
- Learning!!



Questions?

WILLIAM & MARY LAW SCHOOL

VIRGINIA COASTAL POLICY CENTER

