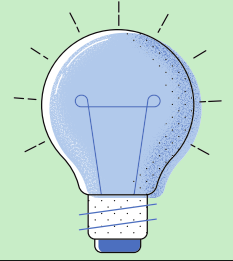




General Course Objectives:

At the completion of this course, the student should be able to:



1. Define the major anatomical structures of the oral cavity and their functions.
2. Identify the types of teeth and explain their roles in the dental arch.
3. Apply dental notation systems to accurately identify and record teeth.
4. Summarize the stages of tooth development and eruption.
5. Recognize normal and abnormal occlusal relationships and their clinical significance.
6. Describe common dental anomalies and their developmental causes.
7. Discuss the structure and function of the alveolar process and supporting tissues.
8. Analyze the relationship between tooth anatomy, function, and oral health.
9. Memorize the impact of factors such as attrition, trauma, and tooth loss on occlusion.
10. Identify the biological basis of tooth movement in orthodontics.
11. Recognize foundational knowledge necessary for identifying and discussing common dental conditions.



12. Compare the anatomical and functional differences between maxillary and mandibular anterior teeth.
13. Summarize the relationship between tooth development timelines and eruption patterns, particularly in canines.
14. Describe common occlusal variations in posterior teeth.
15. Compare structural features and functions among the different classes of molars.
16. Recognize and differentiate deciduous (primary) teeth from permanent dentition.
17. Describe the basic types of oral tissues, including epithelial, connective, muscular, and nervous tissues, and their functions.
18. Name the key structures and developmental stages involved in the formation of the palate.
19. Describe the stages of enamel organ development and the characteristics of each.
20. Summarize the microscopic structure of enamel rods and their role in tooth integrity.
21. Describe the biological response of bone to mechanical forces and its relevance to tooth movement.
22. Outline the stages of active tooth eruption and identify key transitions during the process.
23. Classify the types of oral mucosa and describe their locations and functions in the oral cavity.
24. Recognize clinical signs on the tongue that may indicate systemic or oral health issues.
25. Describe the structure and cellular arrangement of salivary glands and their function in oral health.