



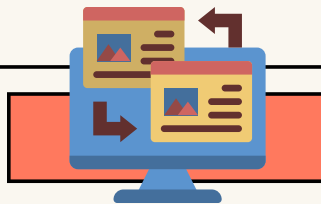
# IMPORTANT ADDITIONAL COMMUNITY COLLEGE AND SCHOOL OF DENTAL ASSISTING STATEMENTS:



## Meeting Established Deadlines



Submit as directed by the course director on the established dates. Academic exercises submitted after the established deadlines will be penalized by the grade. Students are encouraged to keep a duplicate copy of all submitted academic exercises.



## Germanna Cares



Any student who faces challenges securing good, transportation, supplies, or housing and believes this may affect their performance in the course is urged to contact the Dean of Student Development. Furthermore, please notify Ms. Bettis if you are comfortable doing so. This will allow me to direct you to available resources provided by the college.

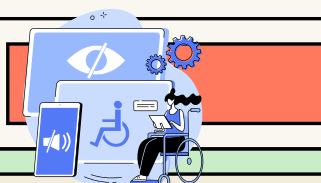
**Email:** [germannacares@germanna.edu](mailto:germannacares@germanna.edu), for a counselor to help direct you to the appropriate support services.

## ADA Statement - Office of Accessibility Resources (OAR)



Germanna Community College respects and welcomes students of all backgrounds and abilities. In the event that you encounter any barrier(s) to full participation in your course due to the impact of a disability, please contact the Office of Accessibility Resources (OARS)

Email: [disabilityservices@germanna.edu](mailto:disabilityservices@germanna.edu) or call Mr. Win Stevens at 540.891.3019



## Diversity Statement



**Diversity, Equity, and Inclusion** are core values of Germanna Community College. I recognize my responsibility to create, maintain, and nurture an academic and social environment that respects the diversity of people and ideas. I am committed to being an inclusive community that respects all cultures, experience, and abilities and prepares individuals to thrive globally.





## IMPORTANT ADDITIONAL COMMUNITY COLLEGE AND SCHOOL OF DENTAL ASSISTING STATEMENTS:

### Academic Dishonesty Policy



Ms. Bettis of Germanna Community College recognizes that academic honesty is an integral factor in developing and sharing knowledge. Ms. Bettis supports the practice of academic honesty, practice academic honesty in our classes, and require academic honesty from our students. GCC students are expected to maintain complete honesty and integrity in the completion and presentation of all academic assignments and examinations. Any student found guilty of cheating, plagiarism, or other dishonorable acts in academic work is subject to disciplinary action.

Academic dishonesty is cheating and stealing. Academic dishonesty includes, but is not limited to:

- **Using material verbatim from a source without giving credit**
- **Rewriting material from a source without giving credit**
- **Using information from an internet source without giving credit**
- **Submitting the work of another person as your own work**
- **Using/copying another student's computer disk**
- **Copying from another person's paper/test/homework**
- **Allowing someone else to copy/use your work (e.g., paper, homework, quiz and test)**



**FALSE**