

OLD DOMINION UNIVERSITY

CYSE 301 CYBERSECURITY TECHNIQUES AND OPERATIONS

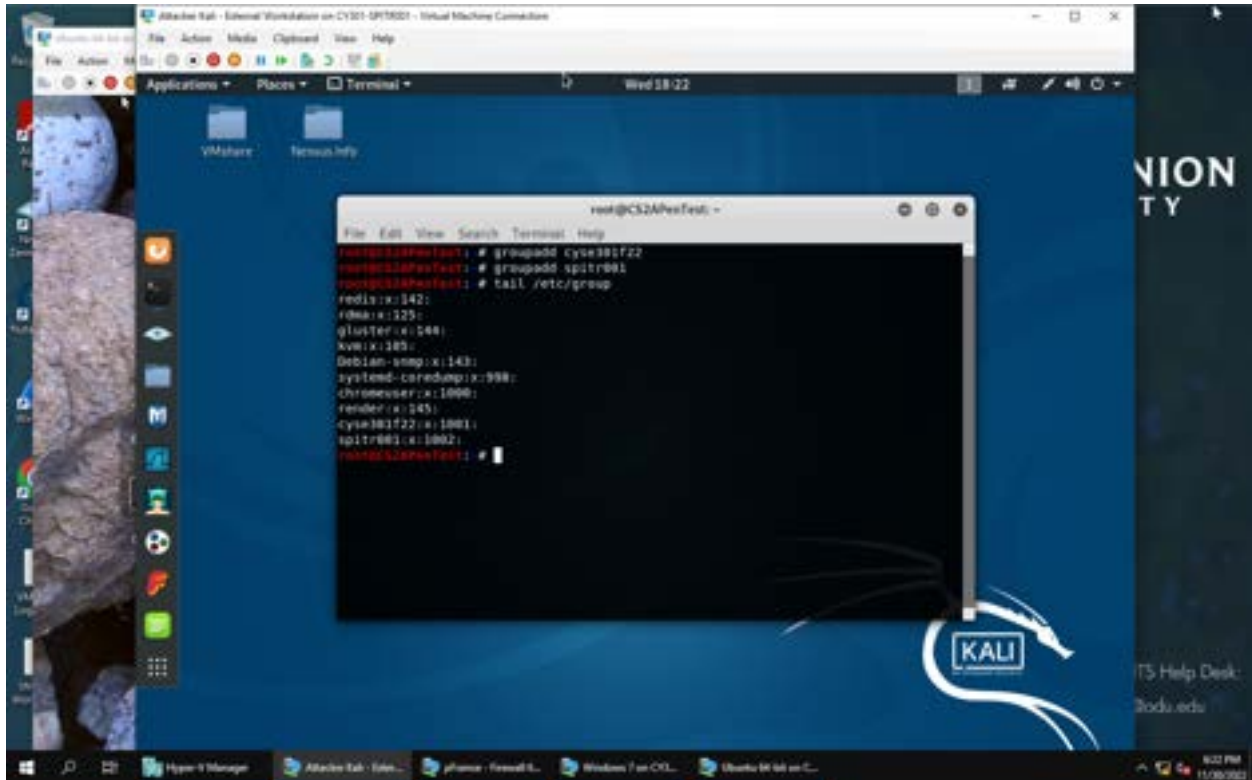
Assignment #5 Password Cracking

Shacara Pitre

01204408

TASK A

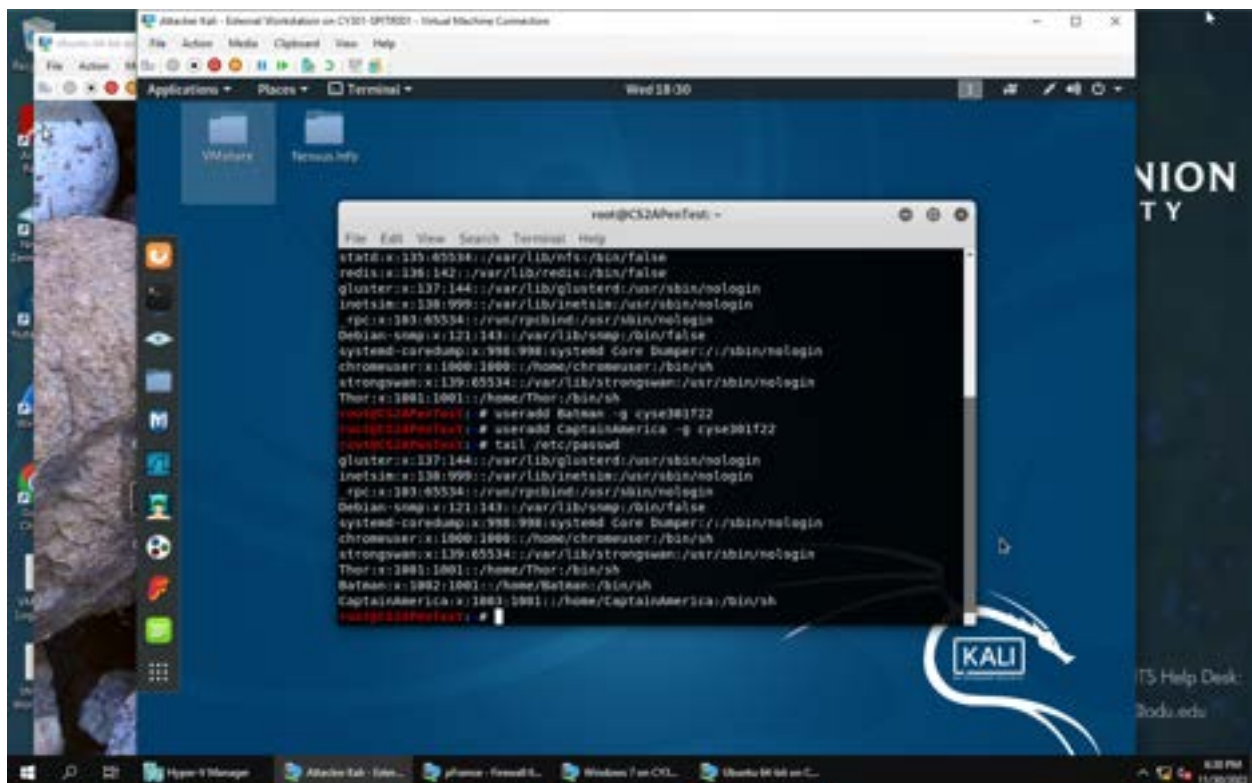
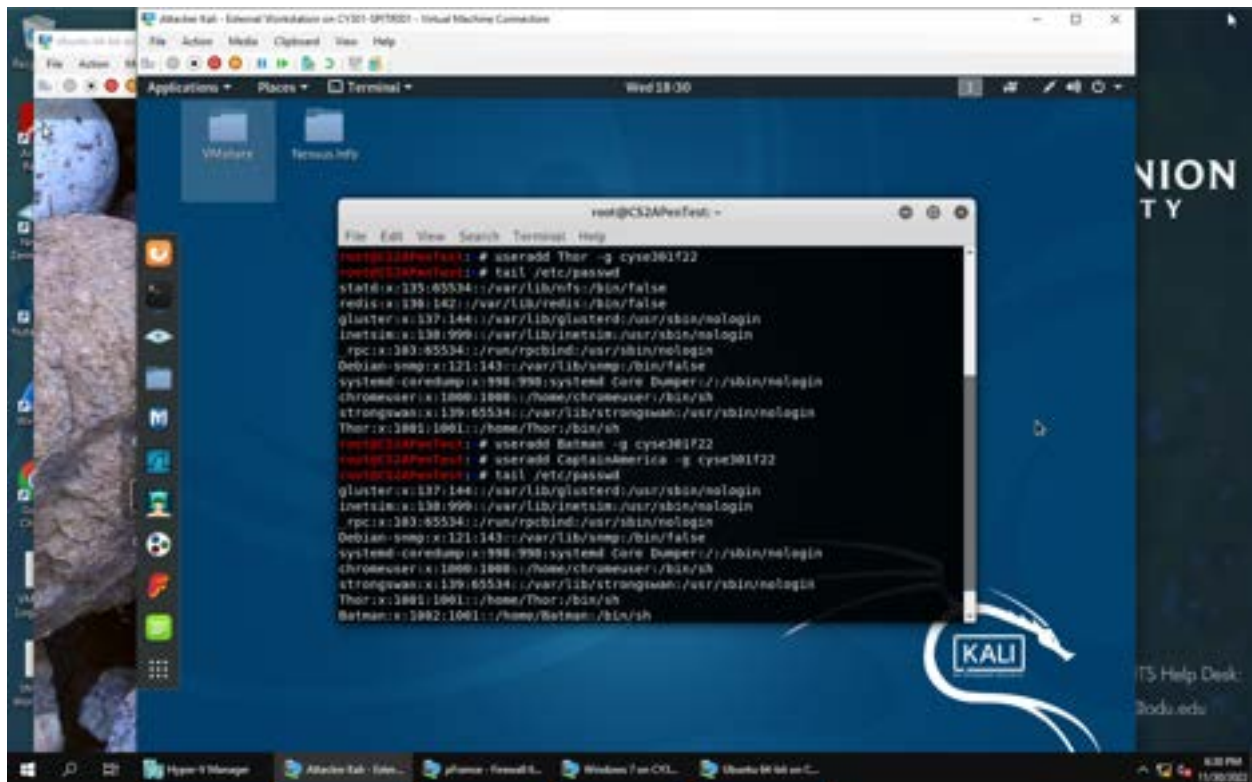
1. Create two groups

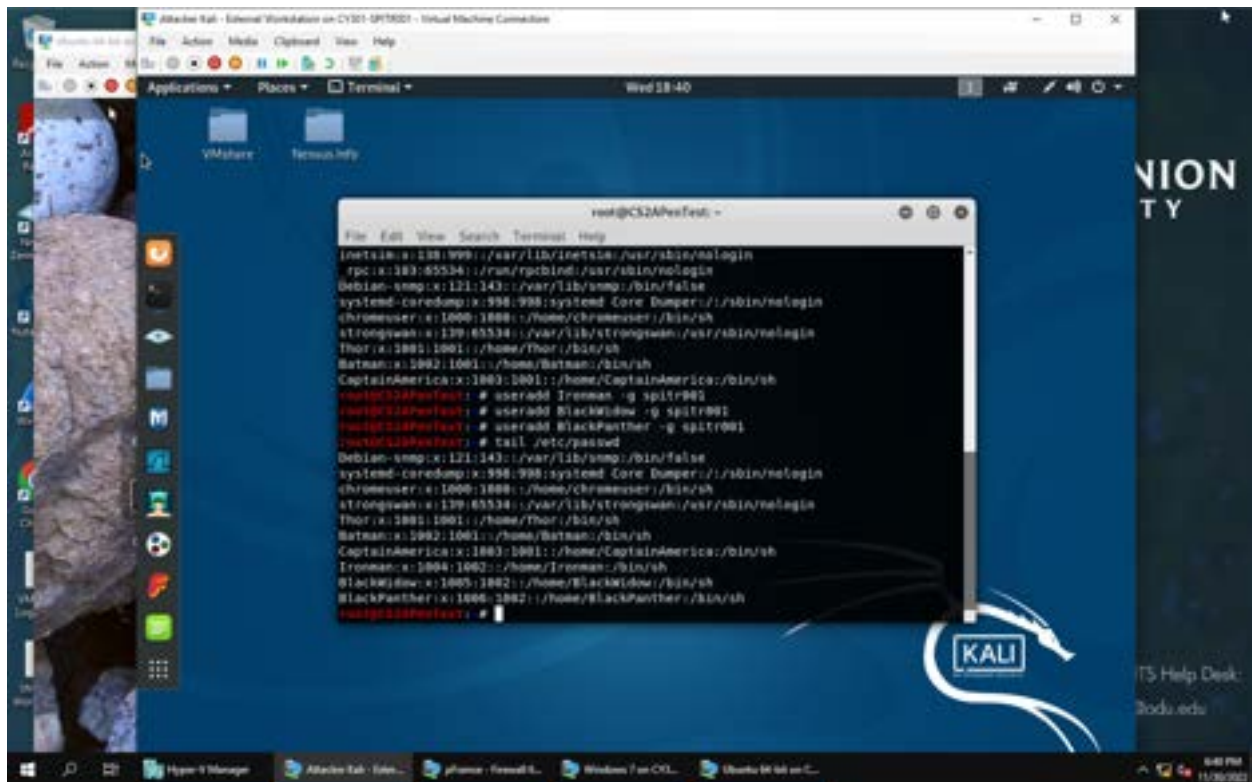


The screenshot shows a Kali Linux desktop environment with a terminal window open. The terminal displays the following commands and output:

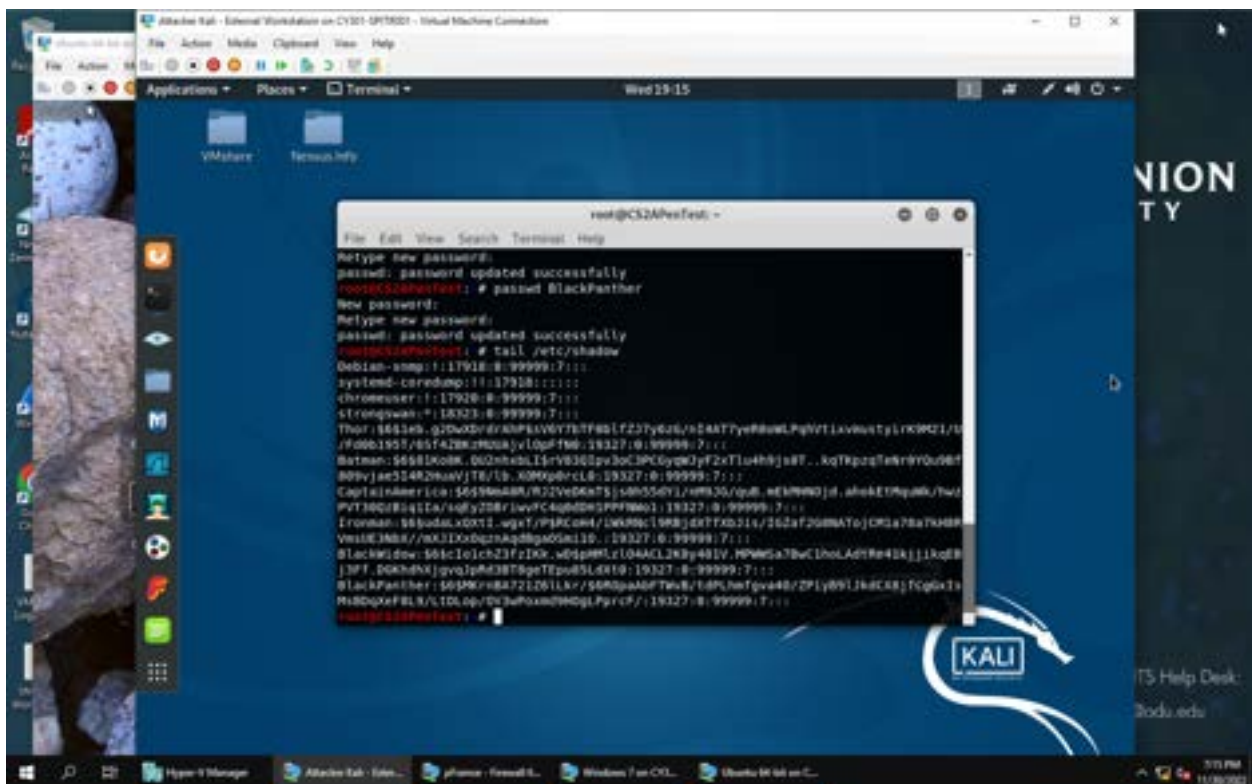
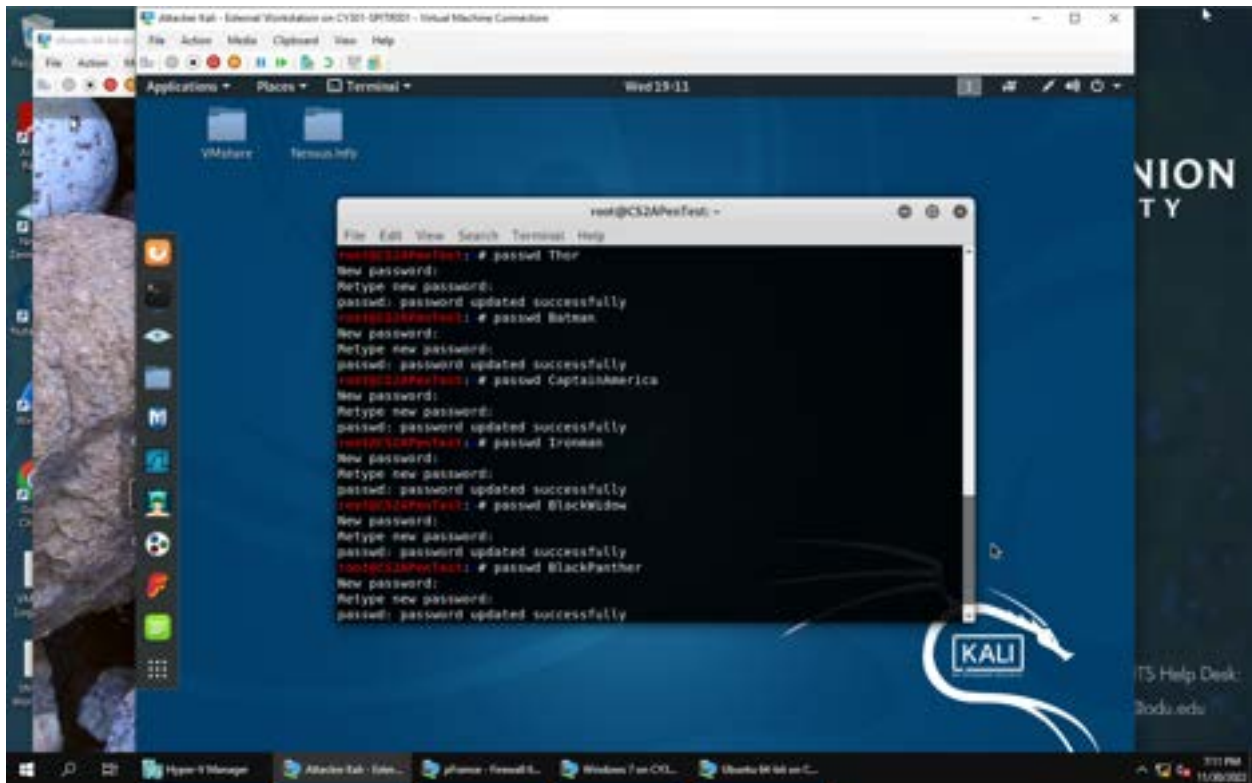
```
root@CS2APesTest: ~  
root@CS2APesTest:~# groupadd cyse301f22  
root@CS2APesTest:~# groupadd spitr901  
root@CS2APesTest:~# tail /etc/group  
redis:x:142:  
f0ma:x:325:  
gluster:x:544:  
xvm:x:185:  
Debian-smp:x:143:  
systemd-coredump:x:998:  
chromedriver:x:1000:  
render:x:145:  
cyse301f22:x:1001:  
spitr901:x:1002:  
root@CS2APesTest:~#
```

2. Create and assign three users to each group

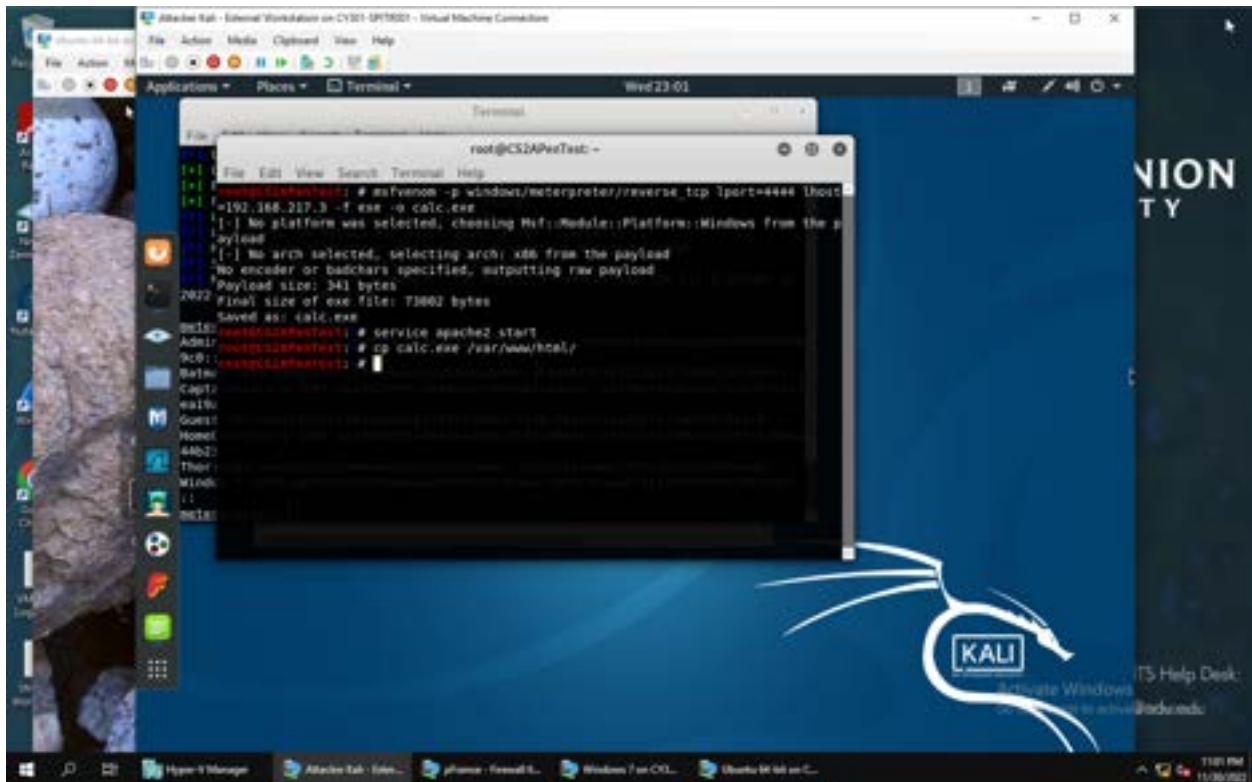
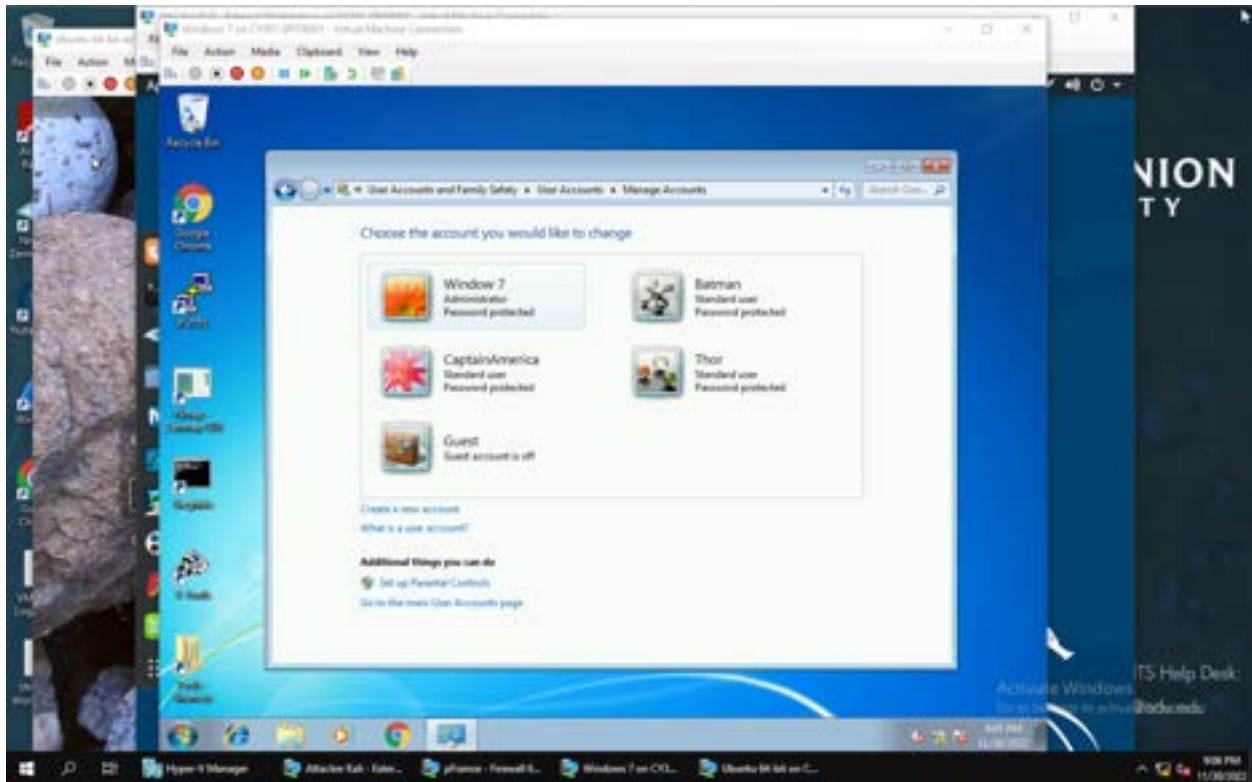


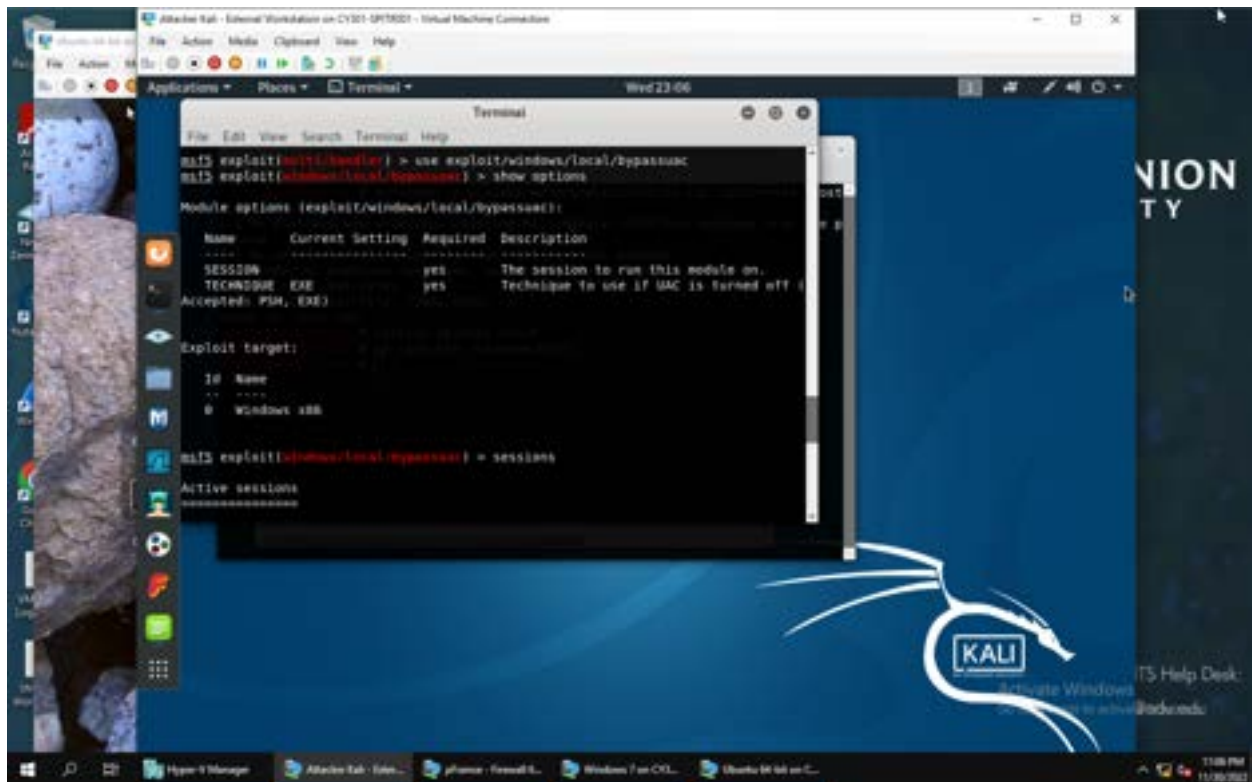


3. Choose six new passwords for each user

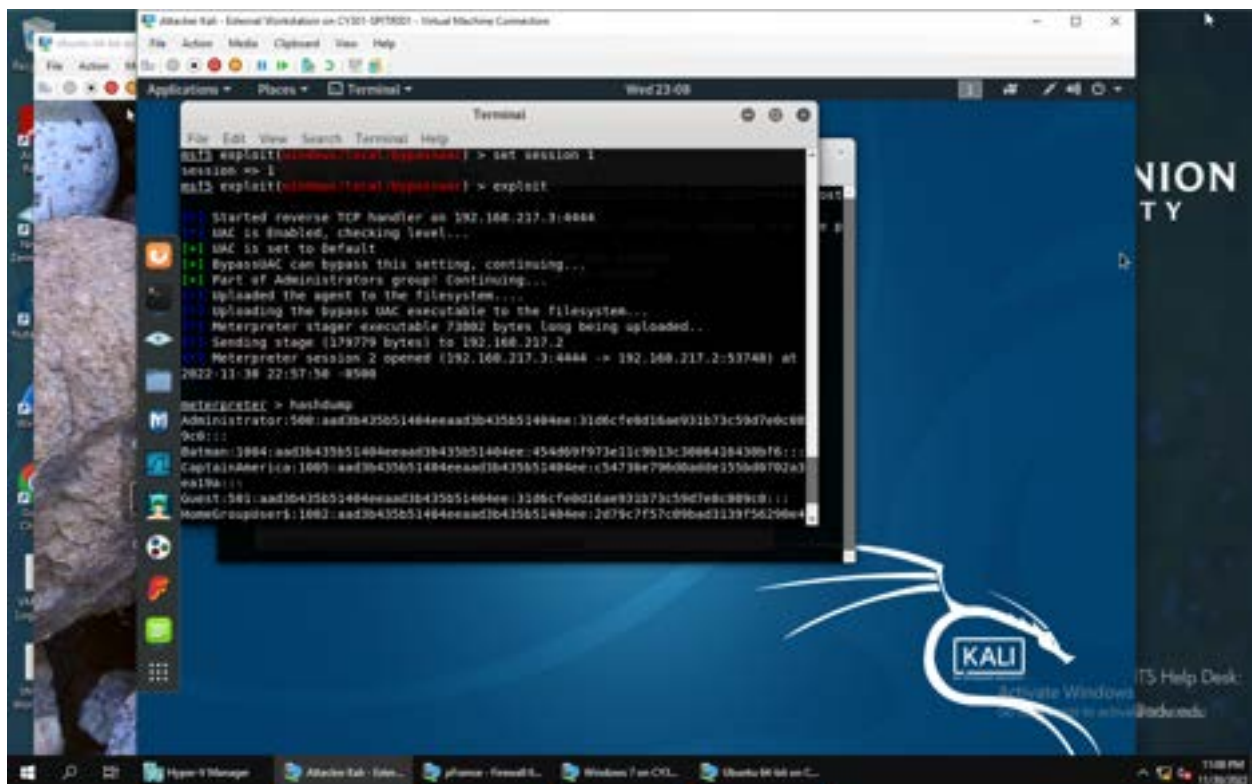


Task B

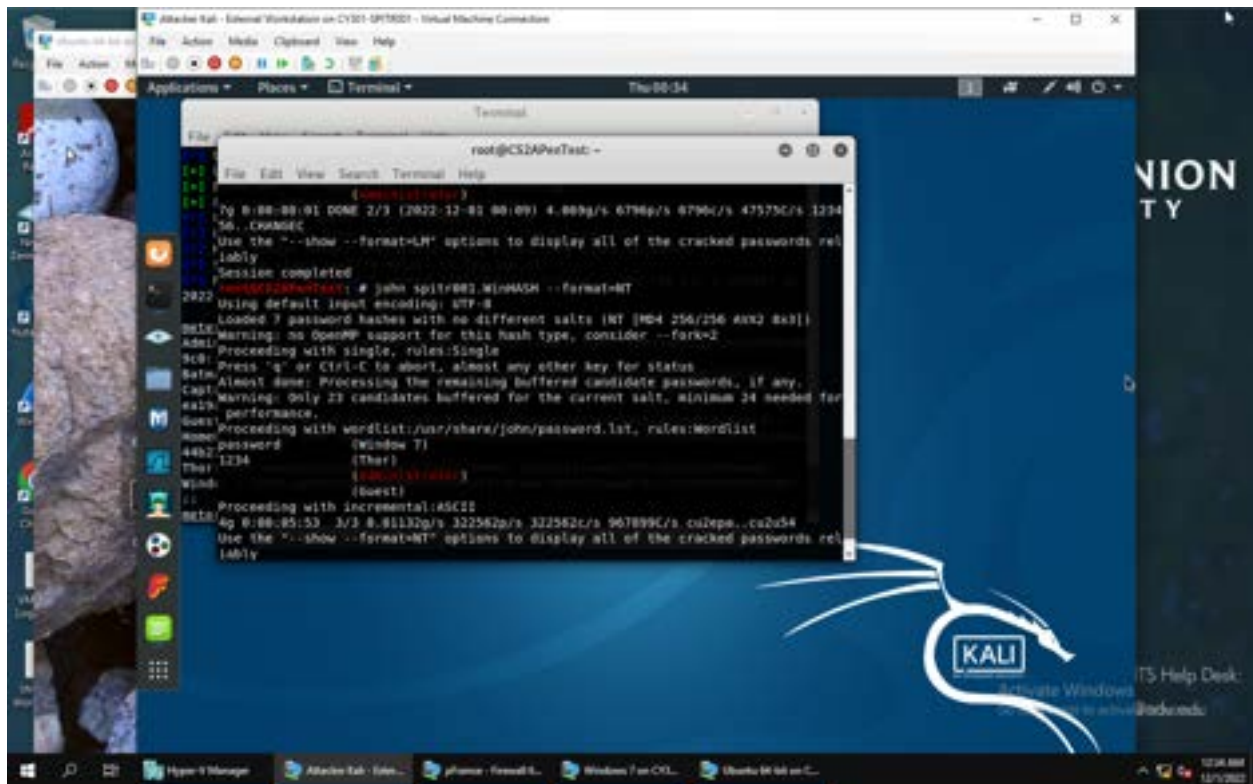




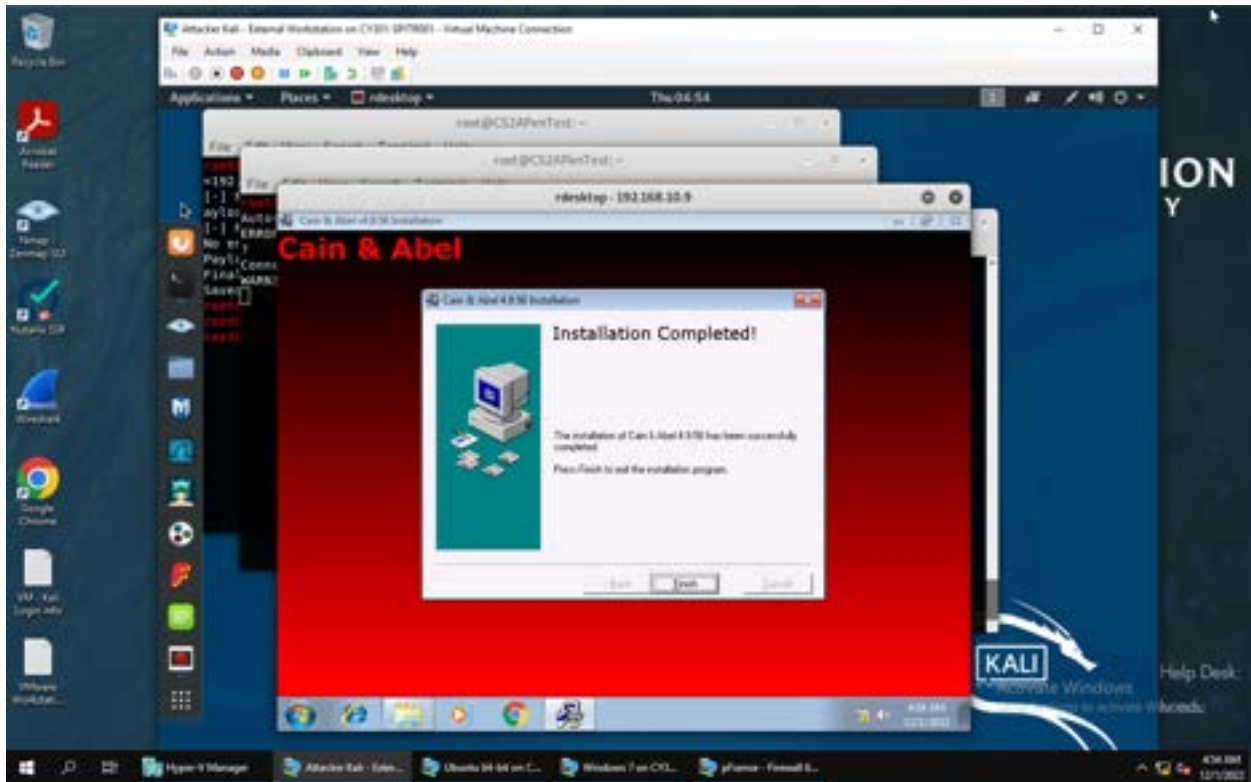
1. Display the password hashes



Run John the ripper to crack the password



3. Upload the password cracking tool, Cain and Abel, to remote Windows 7 VM and install it via a remote desktop window



Implement brute force and dictionary attacks to crack the passwords

