

Lab 3 Report: Enabling Windows Active Directory and User Access Controls

Section 1

a. All new users and groups created in Active Directory

The screenshot shows the Active Directory Users and Computers console. The left pane shows the tree structure with 'Users' selected. The main pane displays a table of users and groups:

Name	Type	Description
Administrator	User	Built-in account for administering the comp...
Allowed RODC Password Replicat...	Security Group - Domain Local	Members in this group can have their passw...
Can-Publishers	Security Group - Domain Local	Members of this group are permitted to pub...
Cloneable Domain Controllers	Security Group - Global	Members of this group that are domain con...
DefaultAccount	User	A user account managed by the system.
Denied RODC Password Replicato...	Security Group - Domain Local	Members in this group cannot have their pa...
DnsAdmins	Security Group - Domain Local	DNS-Administrators Group
DnsUpdateProxy	Security Group - Global	DNS Clients who are permitted to perform d...
Domain Admins	Security Group - Global	Designated administrators of the domain
Domain Computers	Security Group - Global	All workstations and servers joined to the do...
Domain Controllers	Security Group - Global	All domain controllers in the domain
Domain Guests	Security Group - Global	All domain guests
Domain Users	Security Group - Global	All domain users
Enterprise Admins	Security Group - Universal	Designated administrators of the enterprise
Enterprise Key Admins	Security Group - Universal	Members of this group can perform admini...
Enterprise Read-only Domain Cont...	Security Group - Universal	Members of this group are Read-Only Dom...
Group Policy Creator Owners	Security Group - Global	Members in this group can modify group p...
Guest	User	Built-in account for guest access to the com...
HRUser01	User	
HumanResources	Security Group - Global	
Key-Admins	Security Group - Global	Members of this group can perform admini...
Manager 01	User	
Managers	Security Group - Global	
Protected Users	Security Group - Global	Members of this group are afforded additi...
RAS and IAS Servers	Security Group - Domain Local	Servers in this group can access remote acc...
Read-only Domain Controllers	Security Group - Global	Members of this group are Read-Only Dom...
Schema Admins	Security Group - Universal	Designated administrators of the schema
SUUser 01	User	
Shopfloor	Security Group - Global	

b. Unsuccessful access error messages of the LabFiles folder

HRFiles



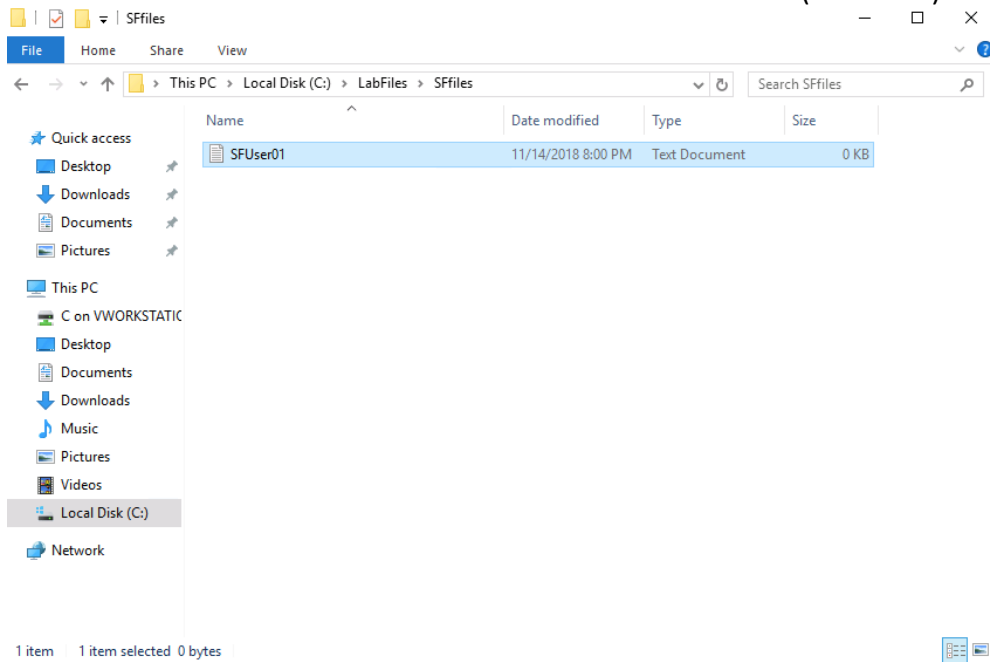
You don't currently have permission to access this folder.

Click Continue to permanently get access to this folder.

Continue

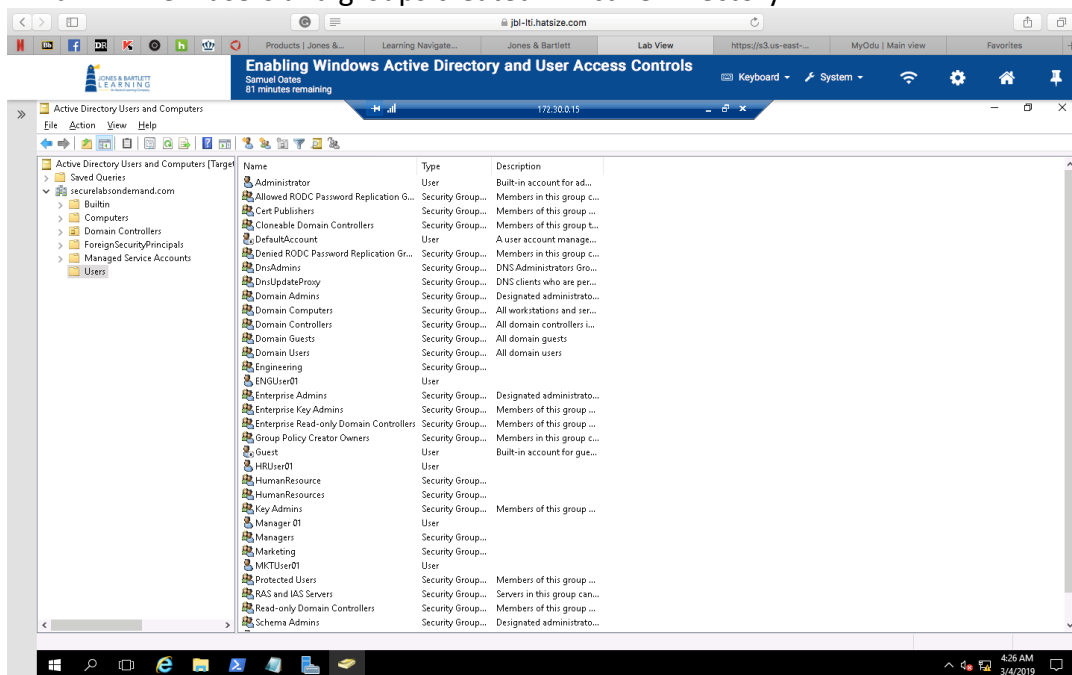
Cancel

c. Successful text file creation in the LabFiles subfolders (SFUser01)



Section 2

a. All new users and groups created in Active Directory



b. PowerShell commands used to restrict the ENGfiles and MKTfiles Folders

```
PS C:\Users\Administrator> New-Item -type directory -path C:\LabFiles_S2\ENGfiles

Directory: C:\LabFiles_S2

Mode                LastWriteTime         Length Name
----                -
d-----          3/4/2019  4:47 AM             ENGfiles

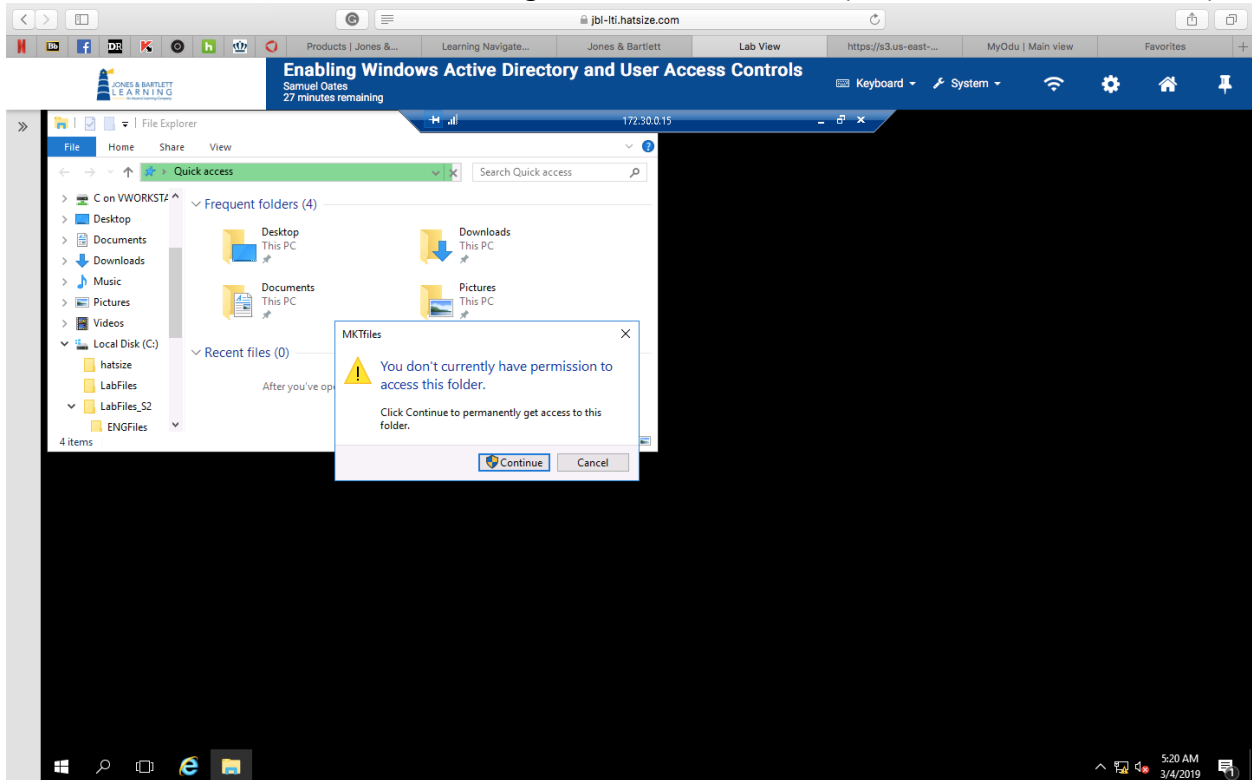
PS C:\Users\Administrator> $acl = Get-Acl C:\LabFiles_S2\ENGfiles
PS C:\Users\Administrator> $acl | Set-AccessRuleProtection($true,$false)
PS C:\Users\Administrator> $rule = New-Object System.Security.AccessControl.FileSystemAccessRule("Administrators","FullControl","ContainerInherit, ObjectInherit","None","Allow")
PS C:\Users\Administrator> $acl | Add-AccessRule($rule)
PS C:\Users\Administrator> $rule = New-Object System.Security.AccessControl.FileSystemAccessRule("Engineering","ReadAndExecute,Write,Modify","ContainerInherit, ObjectInherit","None","Allow")
PS C:\Users\Administrator> $acl | Add-AccessRule($rule)
PS C:\Users\Administrator> Set-Acl C:\LabFiles_S2\ENGfiles $acl
PS C:\Users\Administrator> New-Item -type directory -path C:\LabFiles_S2\MKTfiles

Directory: C:\LabFiles_S2

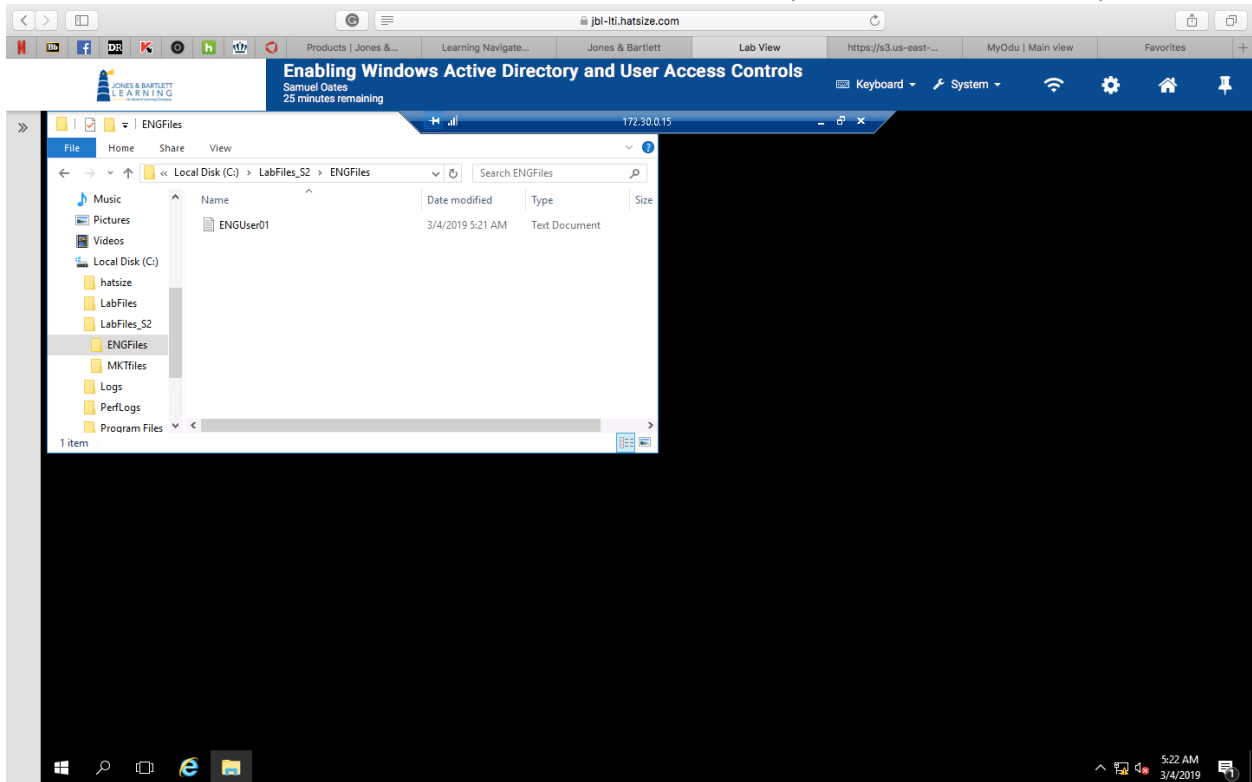
Mode                LastWriteTime         Length Name
----                -
d-----          3/4/2019  5:04 AM             MKTfiles

PS C:\Users\Administrator> $acl = Get-Acl C:\LabFiles_S2\MKTfiles
PS C:\Users\Administrator> $acl | Set-AccessRuleProtection($true,$false)
PS C:\Users\Administrator> $rule = New-Object System.Security.AccessControl.FileSystemAccessRule("Administrators","FullControl","ContainerInherit, ObjectInherit","None","Allow")
PS C:\Users\Administrator> $acl | Add-AccessRule($rule)
PS C:\Users\Administrator> $rule = New-Object System.Security.AccessControl.FileSystemAccessRule("Marketing","ReadAndExecute,Write,Modify","ContainerInherit, ObjectInherit","None","Allow")
PS C:\Users\Administrator> $acl | Add-AccessRule($rule)
PS C:\Users\Administrator> Set-Acl C:\LabFiles_S2\MKTfiles $acl
```

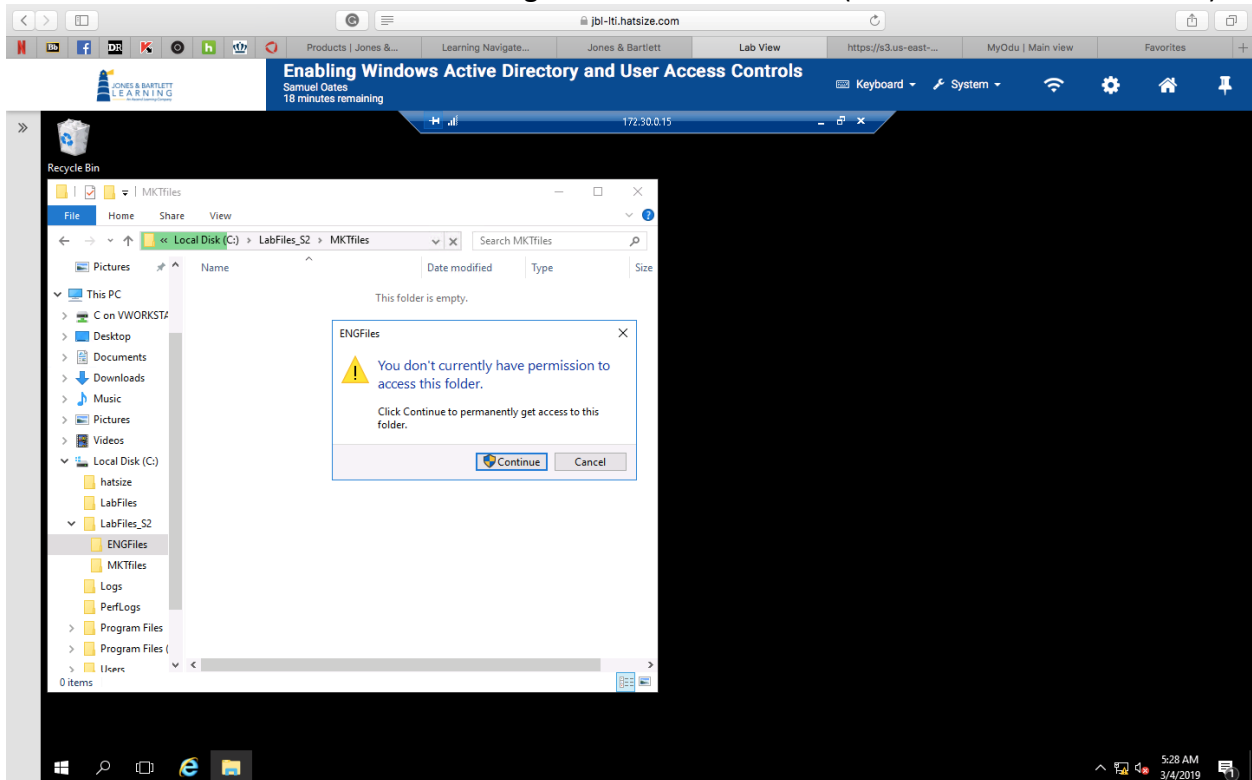
c. Unsuccessful access error message of the LabFiles folder (ENGUser to MKTfiles folder)



d. Successful text file creation in the LabFiles subfolder (ENGUser01 in ENGFiles)



c. Unsuccessful access error message of the LabFiles folder (MKTUser to ENGfiles folder)



d. Successful text file creation in the LabFiles subfolder (MKTUser01 in MKTFiles)

